



MEMORANDUM

TO: The Honorable JB Pritzker, Governor
The Honorable Jim Durkin, House Minority Leader
The Honorable Don Harmon, Senate President
The Honorable Dan McConchie, Senate Minority Leader
The Honorable Emanuel "Chris" Welch, Speaker of the House

FROM: Dr. Carmen I. Ayala
State Superintendent of Education

DATE: December 16, 2021

SUBJECT: Illinois State Board of Education 2021 Annual Report

This report, submitted in compliance with 105 ILCS 5/1A-4E, provides a discussion of the overall condition of education in Illinois. Information is included concerning student and teacher demographics; data on teacher and administrator licensure; federal, state, and local resources; and other data on Illinois education.

For more information, please contact Executive Director of Legislative Affairs Amanda Elliott at (217) 782-6510 or aelliott@isbe.net.

cc: Secretary of the Senate
Clerk of the House
Legislative Research Unit
State Government Report Center

2021 Annual Report

Dr. Carmen I. Ayala
State Superintendent of Education

Darren Reisberg
Chair of the Board



Illinois
State Board of
Education



Illinois State Board of Education

The State Board of Education consists of nine members who are appointed by the Governor with the consent of the Senate.

Board members serve four-year terms, with membership limited to two consecutive terms. The Board appoints the State Superintendent of Education, who may be recommended by the Governor.



Dr. Carmen I. Ayala
State Superintendent of Education



Darren Reisberg
Chair of the Board
Chicago



Dr. Donna S. Leak
Vice Chair
Flossmoor



Jaime Guzman
Secretary
Chicago



Dr. Christine Benson
Chair of the Finance and
Audit Committee
Ottawa



Roger Eddy
Robinson



Dr. David R. Lett
Springfield



Susie Morrison
Chair of the Education
Policy Planning Committee
Carlinville



Dr. Nike Vieille
Harvard



Illinois State Board of Education

2021

Annual Report



January 2022

To all residents of Illinois:

If the COVID-19 pandemic made one thing crystal clear, it's that our teachers and their talents in-person in our classrooms are irreplaceable. When the 2020-21 school year started, fewer than 10 percent of Illinois students had access to fully in-person learning. Most were fully remote, with some in hybrid environments. The 2021 Illinois Report Card, released at the end of October, showed in stark numbers the deep impact of this lack of access to in-person educators on our students' academic growth and engagement in school.

One in five students was chronically absent. The number of students meeting standards in math and English language arts dropped by 18 and 17 percent, respectively. The losses were even greater among younger students and English Learners. Students received more failing grades.

Thankfully, we have already taken the most important step to restoring students' academic gains – and that is ensuring fully in-person learning for all students across the state. ISBE's partnership with the Illinois Department of Public Health has produced public health guidance driven by data and science to protect the health and safety of students and educators, slow the spread of the COVID-19 virus, and ensure that we do not have to bring back remote learning.

Our recovery from the pandemic is bolstered by nearly \$8 billion in federal pandemic relief funds. The agency has directed its share of the federal pandemic relief funds in line with our Strategic Plan – which focuses on the three broad goals of student learning, learning conditions, and elevating educators. We took huge strides toward closing the digital divide and partnered with the nonprofit organization OneGoal to provide postsecondary support to high-need districts. We addressed the social-emotional needs of students and educators through partnerships with the Center for Childhood Resilience at Lurie Children's Hospital and a \$100 million grant opportunity to fund mental health partnerships between schools and community organizations. In collaboration with our two state teachers' unions, we established a mentoring and coaching program to give extra support to first-year educators beginning their careers in the midst of a pandemic.

School districts have local control over 90 percent of federal pandemic relief funds. ISBE collaborated with the Illinois P-20 Council in creating the Learning Renewal Resource Guide to support school districts in identifying potential evidence-based strategies to close the gaps caused by the pandemic.

Equity continues to drive ISBE's work in implementing our Strategic Plan. We believe we have an urgent and collective responsibility to ensure our policies, practices, and programs value students' differences and provide each student the individual support they need to reach high standards. In the spring of 2021 we adopted Culturally Responsive Teaching and Leading Standards to guide educator preparation programs in ensuring aspiring teachers are equipped with the necessary skills to engage students from all different backgrounds. We also continue to expand pathways into the teaching profession for people of color.

We face a call to action over the next several years – not only to address the impact of the pandemic, but also to make structural changes to our educational systems to improve opportunities and outcomes for all students.

The involvement of lawmakers, parents, families, and everyone who works in and cares about our schools will be essential to our success. Thank you for your passion and dedication today and on the road ahead.

Sincerely,

Darren Reisberg
Chair of the Board

Dr. Carmen I. Ayala
State Superintendent of Education

Table of Contents

Illinois Teacher of the Year	1
2021 Condition of Education	2
STATE, LOCAL, AND FEDERAL RESOURCES	6
State, Local, and Federal Resources For Elementary and Secondary Education	6
Elementary and Secondary School Income from Local Sources	7
Net Lottery Proceeds Compared to Total Appropriations to ISBE	8
State Revenues by Source	9
Appropriations by Major Purpose.....	10
Expenditures by Major Purpose.....	11
State-Mandated Categorical Grant Programs.....	12
Receipts and Expenditures for Illinois Public School Districts	13
Public Schools Finance Statistics	15
Total Resources per Pupil Enrolled.....	17
State Operating Expense per Pupil	18
Operating Expense per Pupil by Type of District.....	18
Total Funding Elementary and Secondary Education.....	19
State, Local and Federal Funding Elementary and Secondary Education.....	19
Percentages of State, Local and Federal Funding.....	20
SCHOOLS AND DISTRICTS	21
A Profile of Illinois Public Schools in 2020-21	21
Illinois Public School Districts by Type	23
Comparison of Public School Districts by Type and Enrollment 2010-11 and 2020-21.....	24
Comparison of Public and Nonpublic Attendance Centers 2010-11 and 2020-21.....	24
Public School Recognition Committee Act or Omissions Status Report for the 2020-21 School Year	25
STUDENTS	26
Public and Nonpublic Prekindergarten through Postgraduate Fall Pupil Enrollment	26
Comparison of Public School Enrollment 2010-11 and 2020-21	27
Comparison of Public School Enrollment By Racial/Ethnic Distribution.....	28
Comparison of Nonpublic School Enrollment 2010-11 and 2020-21	28
English Learner Enrollments by Native Language 2021-21	29
English Learner Students by Transition Status and School Year Outcome 2020-21.....	30
School Districts That Served More Than 1,000 English Learners 2020-21	31
English Learner Enrollment.....	32

Number of Preschool Children Served by State-Funded Programs	32
High School Graduates*	33
2020-21 High School Dropout Rate* by Grade Level, Gender, and Race/Ethnicity	34
Selected School Report Card Variables and Statewide Trend Data	35
STUDENT PERFORMANCE	37
State Accountability Assessments	37
Dynamic Learning Maps Alternate Assessment	38
National Assessment of Educational Progress “The Nation’s Report Card” Average Student Scores for Illinois and U.S. Public Schools	39
National Assessment of Educational Progress “The Nation’s Report Card” Comparison of Illinois and U.S. Achievement Gaps.....	41
EDUCATORS	42
Number of Selected Public School Personnel by Gender Full-Time Equivalents	42
Nonpublic School Personnel Full-Time Equivalents (FTE) 2020-21	42
Salaries for Select Full-Time Equivalent Public School Personnel	43
Public School Pupil-to-Teacher Ratios	43
Educator Licenses Issued by Evaluation and Entitlement	44
Educator Licenses Issued by Type.....	44
Educator Endorsements Issued by Type	45
Educator Licensure Tests Administered by Test Fields	45
National Board-Certified Teachers Certification Earned in Illinois	47
Expenditures to National Board-Certified Teachers	48
SPECIAL EDUCATION SERVICES.....	49
Students with Disabilities Receiving Special Education Services Ages 3-21 Unduplicated Count	49
Students with Disabilities by Gender Ages 3-21 Unduplicated Count	49
Students with Disabilities by Race/Ethnic Group Ages 3-21 Unduplicated Count	50
Students with Disabilities by Age Unduplicated Count.....	50
Students with Disabilities Exiting School Ages 14-21 Unduplicated Count	51
Students with Disabilities by Primary Language Ages 3-21 Unduplicated Count	51
Students with Disabilities Receiving Related and Other Special Education Services Ages 3-21 Duplicated Count.....	52
Educational Placement of Children with Disabilities Ages 3-5 Unduplicated Count	53
Educational Placement of Children with Disabilities Ages 6-21 Unduplicated Count	54
Teachers Employed to Provide Special Education Services Full-Time Equivalents	54
Paraprofessionals Employed to Provide Special Education Services Full-Time Equivalents.....	55
Special Education and Related Services Personnel Full-Time Equivalents	55
2020-21 Counts of Due Process Cases	56
Mandated Categorical Grants Rate Analysis	59

Teachers' Retirement Systems	60
Teachers' Retirement Insurance Program*	60

Illinois Teacher of the Year



Justin Johnson, director of bands at Niles West High School in Niles Township High School District 219 in Skokie, is the 2021 Illinois Teacher of the Year. Johnson was announced during the October 21, 2020, Illinois State Board of Education meeting.

Johnson, who was a 2016 Golden Apple Award finalist and Teacher of Distinction recipient, has been the director of bands at Niles West for nine years. Johnson also received the 2020 Niles West High School David L. Zemsky Teacher of the Year award, which is determined by student vote.

Johnson, one of three 2021 Cook County Regional Teachers of the Year, recognizes the opportunities afforded to him through his music education and career as being

instrumental in his journey. Johnson also credits a former teacher for encouraging him and helping him realize his potential. The extra care from this teacher helped shape his own teaching philosophy. He knows first-hand the importance of looking beyond daily interactions to develop the relationships that provide students with a sense of security and an environment where they can thrive.

Johnson uses his music program to inspire students to be more responsible, instill great work ethic, take pride in their efforts, and be part of a community advancing toward a common goal. Johnson advocates for equitable access to music education and has worked to promote cultural diversity in music education. He developed a split scheduling plan as part of the capstone project for his master's degree to help students take supplementary courses and study fine arts -- essentially at the same time.

Johnson's passion for equity in education extends beyond music education. He has participated in committees formally tasked with increasing the recruitment and retention of diverse teachers and has mentored new teachers at Niles for the past five years.

Johnson received a bachelor's degree in Music Education from the University of Memphis and a master's degree in Music Education from Eastern Illinois University. He is a member of the Illinois Federation of Teachers, Illinois Education Association, National Association of Music Education, Jazz Educators Network, Illinois Music Educators Association, and Phi Beta Mu International.

Johnson is currently taking part in a year-long sabbatical funded by ISBE that allows him the opportunity to visit Illinois school districts and universities to engage and interact with current and prospective teachers.

2021 Condition of Education

Budget

The fiscal year 2022 General Funds budget for preK-12 education was \$9.2 billion, of which \$7.6 billion was appropriated for Evidence-Based Funding (EBF) – an increase of \$362.1 million over FY 2021. FY 2022 marked the fifth year of implementation of EBF, which directs increases in state funding to the districts in the greatest financial need.

Enacted FY 2022 EBF appropriations provided sufficient funding to maintain each district's Base Funding Minimum level, equal to the total EBF it received in FY 2021, as well as to distribute \$300 million through the EBF tiers, which is the portion of the formula that sends additional appropriations primarily to the least well-funded districts. Eight out of every 10 students in Illinois still attend schools funded at less than 90 percent of adequacy. The range of adequacy for Illinois districts after FY 2022 funding is distributed will be 55 to 269 percent, which illustrates the extent of the funding inequity that still exists.

Illinois lawmakers have invested nearly \$1.3 billion for distribution through the EBF tiers since FY 2018. When Illinois first implemented EBF, 168 districts were at or below 60 percent of adequate funding. There are only 16 districts still at that level in FY 2022. EBF has also offered year-over-year stability, thanks to the Base Funding Minimum portion of the formula. No matter how enrollment shifts, districts have confidence that, at a minimum, the amount of state funding they received in the prior year will repeat in the next year.

Public Act 100-0465 provides a goal for the state to reach full funding of the formula by June 30, 2027. The projected total investment needed to bring all districts to at least 90 percent adequacy is \$4.6 billion – or an annual increase of \$911 million over the next five fiscal years – to meet statutory obligations. This projection is updated on an annual basis, and future funding projections are affected by changes to student enrollment, student demographics, local resources, recalibration of the cost factors, and any changes enacted through the legislative process. ISBE continues to review and implement the state's historic funding reform and recommend recalibration and other modifications to EBF to meet the needs of all students in Illinois.

Student and Teacher Demographics

The 2020-21 school year started at the height of the pandemic, and fewer than 10 percent of Illinois students had access to fully in-person learning. While more and more students returned to in-person learning as the school year progressed, the wholly or partially remote environment had a significant impact on student enrollment.

Nearly 70,000 fewer students enrolled in Illinois public schools statewide in the 2020-21 school year. Prior years' enrollment trends meant ISBE would have anticipated a 1.1 percent decrease in enrollment in a typical year, which leaves a 2.5 percent drop attributable to the pandemic -- on par with the approximately 3 percent average drop in enrollment reported by other states.

Approximately half of all public school students in Illinois in the 2020-21 school year (48.1 percent) qualify as low income, compared to 41 percent just 15 years ago. Students qualify as low income if they are in families receiving public aid, live in temporary housing, or are eligible for free or reduced-price meals.

Illinois continues to have a racially and linguistically diverse student population. Students of color comprise a majority of Illinois' students (53.3 percent). The percentage of students identified as English Learners and those with Individualized Education Programs held steady at 13 percent and 15 percent, respectively.

Illinois continues to increase teacher diversity, moving toward the goal of more closely reflecting the diversity of the student population. Illinois also faces a high demand for teachers overall. School districts reported approximately 1,700 teacher vacancies in October 2020, compared to nearly 2,000 vacancies the October prior. School districts have continued to receive more and more resources through the state's investment in Evidence-Based Funding and the influx of federal pandemic relief funding, meaning they have the financial capacity to create more and more teaching positions.

Illinois added nearly 2,000 teachers to the teacher workforce and saw an increase in teacher retention from 86 to 87 percent. Teacher diversity also increased, with 1,251 more Hispanic teachers and 184 more Black teachers. Teacher pay rose by 3.9 percent. The average class size decreased from 22 to 20 students per class.

Learning Outcomes

The COVID-19 pandemic has affected almost every aspect of education in Illinois – temporarily in some ways and lasting in others. ISBE's Strategic Plan, adopted in November 2020, provides a roadmap for Illinois public schools through 2023 and defines the steps the agency will take to provide each and every child in our state with safe and engaging schools, excellent teachers, and equitable learning opportunities.

Illinois received \$7.8 billion in federal pandemic relief funds, of which 90 percent flows directly to school districts based on the number and percentage of low-income students they serve. Ten percent is directed by ISBE. The agency has aligned its portion of the funding to the overarching goals, all of which are underpinned by equity, in its Strategic Plan:

- **Student Learning:** ISBE allocated \$300 million to districts using the Evidence-Based Funding formula and allocated another \$40 million to special education cooperatives to meet local needs for after-school programs, learning loss, and summer enrichment. The federal requirements for the grant specified that spending had to be in these three categories. ISBE also provided grants to entities not eligible for Title I, such as Safe Schools operated by Regional Offices of Education. ISBE dedicated \$130 million toward devices and connectivity to close the digital divide and partnered with the nonprofit organization OneGoal to provide postsecondary support to high-need districts.
- **Learning Conditions:** To address the social-emotional learning and mental health needs of students, ISBE partnered with Lurie Children's Hospital to create Resilience Education to Advance Community Healing (REACH) teams at 50 schools across the state and to offer a free online virtual learning community. ISBE also launched a \$100 million grant opportunity to fund mental health partnerships between schools and community organizations.
- **Elevating Educators:** In collaboration with Illinois' two state teachers' unions, ISBE established a mentoring and coaching program to give extra support to first-year educators beginning their careers in the midst of a pandemic.

ISBE received a federal waiver for accountability due to the COVID-19 pandemic, so annual accountability designations remained the same in 2021 as in 2019. The schools identified as needing targeted or comprehensive support in 2019 continue to receive additional federal funding and other state supports through IL-EMPOWER.

Student Performance and Achievement

Remote learning took a serious toll on student performance and academic achievement. One in five Illinois students was chronically absent last year, missing 10 percent or more of the school year (with or without a valid excuse) – a 21 percent increase over 2019.¹

Preliminary spring testing data showed far fewer students met grade-level standards in English language arts and math. Data from the Illinois Assessment of Readiness (IAR), taken by students in Grades 3-8, and the SAT, taken by 11th grade students, showed that 16.6 percent fewer students met grade-level standards in English language arts in 2021 than in 2019 and 17.8 percent fewer students met grade-level standards in math.²

The data showed larger decreases in proficiency among younger students, who may have struggled more to engage in remote learning than their older peers.

The rate of ninth-grade students on track to graduate dipped 5 percent from 2019 to 2021, reflecting an increase in students receiving failing grades.³ (Students identified as on track have earned at least five full-year course credits and have earned no more than one semester “F” in a core course. Students who finish the ninth-grade year on track are almost four times as likely to graduate from high school as students who are not on track. Research shows that the number of students on track and the graduation rate rise when schools actively intervene by identifying ninth-graders at risk and providing tutoring, additional instruction, and other individualized services.)

However, more students than ever took college and career preparation coursework in the 2020-21 school year. Illinois saw 9,482 more students enrolled in dual credit, 2,885 more students enrolled in Advanced Placement, and 954 more students enrolled in career and technical education. Even in the midst of a pandemic, students took academically rigorous courses to prepare for college and career. The four-year graduation rate also held steady with 2019 at 86 percent.⁴

¹ ISBE compares 2021 chronic absenteeism rates to 2019, as ISBE and schools did not have a consistent way to collect and record remote attendance in spring 2020.

² ISBE compares 2021 assessment data to 2019, as Illinois students did not take federal accountability assessments in 2020 due to ISBE receiving a federal waiver.

³ ISBE compares the 2021 rate of ninth-graders on track to graduate to 2019, as ISBE issued guidance in spring 2020 for school districts not to issue letter grades and instead to offer pass/incomplete.

⁴ ISBE compares the 2021 graduation rate to 2019, as Illinois took emergency action to adjust graduation requirements in 2020 to account for the sudden shift to remote learning in March and the inequitable access to technology and supports at home.



Illinois State Board of Education

2021 Annual Report Demographic, Financial, and Statistical Data

STATE, LOCAL, AND FEDERAL RESOURCES

State, Local, and Federal Resources For Elementary and Secondary Education (Dollars in Millions) (105 ILCS 5/2-3.11)

Year	State		Local		Federal		Total
	\$	%	\$	%	\$	%	
2020-21	14,522.0	31.9%	19,817.6	43.5%	11,236.1	24.7%	45,575.8
2019-20	14,168.2	37.5%	19,299.3	51.1%	4,300.6	11.4%	37,768.1
2018-19	13,294.0	37.7%	18,310.2	51.9%	3,656.5	10.4%	35,260.7
2017-18	12,509.9	36.7%	17,942.0	52.6%	3,654.6	10.7%	34,106.5
2016-17	11,670.4	35.6%	17,552.8	53.5%	3,602.6	11.0%	32,825.8
2015-16	10,881.5	34.8%	17,271.2	55.2%	3,149.1	10.1%	31,301.8
2014-15	10,438.6	34.6%	16,793.7	55.6%	2,976.5	9.9%	30,208.8
2013-14	10,305.2	34.5%	16,560.4	55.4%	3,007.4	10.1%	29,873.0
2012-13	9,411.6	33.1%	16,075.6	56.5%	2,976.7	10.5%	28,463.9
2011-12	9,315.8	32.4%	15,815.4	55.1%	3,580.8	12.5%	28,712.0
2010-11	7,568.2	28.0%	15,344.1	56.7%	4,127.2	15.3%	27,039.5
2009-10	8,613.0	31.6%	15,037.0	55.1%	3,637.4	13.3%	27,287.5
2008-09	9,105.7	34.5%	14,488.5	54.9%	2,773.7	10.5%	26,367.9
2007-08	8,519.6	34.6%	13,903.7	56.5%	2,165.7	8.8%	24,589.0
2006-07	7,492.1	33.1%	12,982.2	57.3%	2,174.1	9.6%	22,648.4
2005-06	6,903.1	32.4%	12,226.1	57.4%	2,163.1	10.2%	21,292.4
2004-05	6,922.0	33.6%	11,456.7	55.6%	2,219.3	10.8%	20,598.0
2003-04	7,223.2	35.9%	10,805.3	53.8%	2,073.8	10.3%	20,102.3
2002-03	6,812.8	35.9%	10,226.2	53.8%	1,952.1	10.3%	18,991.1
2001-02	6,296.1	35.7%	9,724.0	55.1%	1,623.0	9.2%	17,643.1
2000-01	6,441.0	37.3%	9,331.6	54.1%	1,482.0	8.6%	17,254.6
1999-00	5,932.0	36.7%	8,907.0	55.1%	1,328.1	8.2%	16,167.0

Notes:

- Fiscal years and school years start July 1 and end June 30. Tax years start January 1 and end December 31. The state and federal funds shown are based on fiscal years while local funds are based on tax (calendar) years. For example, the 2018-19 year includes actual state and federal appropriations for state fiscal year 2019 and local revenues accruing to school districts from the 2017 tax year. The 2017 property taxes are payable to the districts in calendar year 2018, usually after July 1.
- Local includes local original property tax revenues as estimated by the total property tax extension of districts and Corporate Personal Property Replacement Funds. Not included as local revenue are proceeds from investment income, income from school food services, and revenue generated through fees and assessments.
- State includes appropriated amount, including original appropriations, supplementals and teacher retirement contributions (does not include employer contributions).
- FY 2009 federal sources include \$1.5 billion in federal funds received through the American Recovery and Reinvestment Act.
- Amounts and percentages may not sum to totals due to rounding.

Elementary and Secondary School Income from Local Sources
(Dollars in Millions)
(105 ILCS 5/2-3.11)

Tax Year	Calendar Year Collected	Property Tax Revenue ^a	CPP Replacement Fund ^b	Total Regular Revenue
2019	2020	19,095.3	722.3	19,817.6
2018	2019	18,491.2	808.2	19,299.3
2017	2018	17,660.1	650.1	18,310.2
2016	2017	17,226.9	715.1	17,942.0
2015	2016	16,870.7	677.1	17,547.9
2014	2015	16,507.0	764.2	17,271.2
2013	2014	16,077.0	716.7	16,793.7
2012	2013	15,864.1	696.3	16,560.4
2011	2012	15,447.6	628.0	16,075.6
2010	2011	15,188.5	626.9	15,815.4
2009	2010	14,632.6	711.4	15,344.0
2008	2009	14,377.2	659.8	15,037.0
2007	2008	13,706.4	782.1	14,488.5
2006	2007	13,109.8	793.9	13,903.7
2005	2006	12,310.9	671.3	12,982.2
2004	2005	11,600.7	625.4	12,226.1
2003	2004	11,001.7	455.0	11,456.7
2002	2003	10,398.8	406.5	10,805.3
2001	2002	9,823.8	402.4	10,226.2
2000	2001	9,220.2	503.8	9,724.0
1999	2000	8,775.2	556.4	9,331.6
1998	1999	8,405.7	501.3	8,907.0

^a Revenue is the product of multiplying total tax rates by Original Equalized Assessed Valuation amounts.

^b CPP Replacement Tax Revenue represents Corporate Personal Property Replacement Tax revenue distributed to school districts during a calendar year.

Net Lottery Proceeds Compared to Total Appropriations to ISBE
(Dollars in Millions)
(105 ILCS 5/2-3.11)

Fiscal Year	Total State Appropriations ^a	Net Lottery Proceeds ^b	
		Amount	% of Total
2021	\$14,522.0	\$776.5	5.3%
2020	\$14,168.2	\$630.4	4.4%
2019	\$13,294.0	\$731.1	5.5%
2018	\$12,509.9	\$718.8	5.7%
2017	\$11,670.4	\$720.3	6.2%
2016	\$10,881.5	\$676.9	6.2%
2015	\$10,438.6	\$678.6	6.5%
2014	\$10,305.2	\$668.1	6.5%
2013	\$9,411.6	\$655.6	7.0%
2012	\$9,315.2	\$639.9	6.9%
2011	\$7,568.2	\$631.9	8.3%
2010	\$8,613.0	\$625.0	7.3%
2009	\$9,105.7	\$625.0	6.9%
2008	\$8,519.6	\$657.0	7.7%
2007	\$7,492.1	\$622.4	8.3%
2006	\$6,903.1	\$670.5	9.7%
2005	\$6,922.0	\$614.0	8.9%
2004	\$7,223.2	\$570.1	7.9%
2003	\$6,815.8	\$540.3	7.9%
2002	\$6,296.1	\$555.1	8.8%
2001	\$6,441.0	\$501.0	7.8%

^a General Funds include retirement contributions and supplemental appropriations.

^b Net Lottery Proceeds stated above reflect transfers to the Common School Fund and are provided by the Commission on Government Forecasting and Accountability in the *Wagering in Illinois 2020 Update* and sources from the Illinois Lottery and Illinois Office of the Comptroller.

Notes:

- Net Lottery Proceeds have been deposited into the Common School Fund since FY 1985.
- Starting March 1, 2010, annual transfers to the Common School Fund are equal to the amount transferred in FY 2009, adjusted for inflation. Any additional net revenue is deposited in the Capital Projects Fund.

State Revenues by Source
(Dollars in Millions)
(105 ILCS 5/2-3.11)

ALL FUNDS REVENUE BY SOURCE	FY 2021 *		FY 2022 (est.)**	
Income Taxes (Gross)	\$22,615	28.2%	\$23,209	27.6%
Sales Taxes (Gross)	10,218	12.7%	10,739	12.8%
Federal Aid	22,571	28.1%	28,027	33.4%
Public Utility	1,592	2.0%	1,481	1.8%
State Lottery (Net)	1,399	1.7%	1,299	1.5%
All other Sources/Transfers	<u>21,821</u>	27.2%	19,275	22.9%
Total	80,216	100.0%	84,030	100.0%

*Source: FY21 IOC Traditional Budgetary Report - information not available until IOC publishes data in Traditional Budgetary Report at end of December 2021.

**Source: Illinois State Budget Fiscal Year 2021 (p. 116).

GENERAL FUNDS BY SOURCE	FY 2021 *		FY 2022 (est.)	
Income Taxes (Gross)	\$30,800	58.8%	\$28,549	57.8%
Sales Taxes (Gross)	9,799	18.7%	9,859	19.9%
Federal Aid	4,744	9.1%	4,203	8.5%
Public Utility	752	1.4%	751	1.5%
State Lottery (Net)	777	1.5%	739	1.5%
All other Sources/Transfers	5,521	10.5%	5,334	10.8%
Total	52,393	100.0%	49,435	100.0%

Source: Commission on Government Forecasting & Accountability Fiscal Year 2021 Budget Summary (pp. 24 and 33).

Amounts and percentages may not sum to totals due to rounding.

Income and Sales Taxes represent gross amounts not reduced for distributions to other funds.

Appropriations by Major Purpose
(Dollars in Millions)
(105 ILCS 5/2-3.11)

ALL FUNDS BY SOURCE	FY 2021		FY 2022 (est.)	
Elementary & Secondary Education	\$26,437	22.9%	\$27,490	22.6%
Higher Education	4,495	3.9%	4,766	3.9%
Human Services	45,539	39.4%	47,950	39.4%
Public Safety	6,408	5.5%	5,611	4.6%
Environmental & Business Regulation	1,481	1.3%	1,563	1.3%
Economic Development & Infrastructure	7,105	6.2%	7,919	6.5%
Governmental Services & Elected Officials	24,002	20.8%	26,359	21.7%
Total	115,467	100.0%	121,658	100.0%

GENERAL FUNDS BY SOURCE	FY 2021		FY 2022 (est.)	
Elementary & Secondary Education	\$14,448	35.5%	\$15,355	37.1%
Higher Education	3,758	9.2%	3,882	9.4%
Human Services	15,112	37.1%	15,035	36.4%
Public Safety	2,026	5.0%	2,044	4.9%
Environmental & Business Regulation	55	0.1%	58	0.1%
Economic Development & Infrastructure	221	0.5%	135	0.3%
Governmental Services & Elected Officials	5,075	12.5%	4,837	11.7%
Total	40,695	100.0%	41,344	100.0%

Source: Governor's Office of Management and Budget Website; Table IA - FY21 Final Appropriations and FY22 Enacted Appropriations.

Amounts and percentages may not sum to totals due to rounding.

Expenditures by Major Purpose
(Dollars in Millions)
(105 ILCS 5/2-3.11)

ALL FUNDS BY SOURCE	FY 2021		FY 2022 (est.)	
Elementary & Secondary Education	11,593	11.8%	27,490	22.6%
Higher Education	2,236	2.3%	4,766	3.9%
Human Services	37,806	38.4%	47,950	39.4%
Public Safety	3,284	3.3%	5,611	4.6%
Environmental & Business Regulation	1,352	1.4%	1,563	1.3%
Economic Development & Infrastructure	9,202	9.3%	7,919	6.5%
Governmental Services & Elected Officials	<u>33,001</u>	33.5%	<u>26,359</u>	21.7%
Total	\$98,474	100.0%	\$121,658	100.0%

GENERAL FUNDS BY SOURCE	FY 2021		FY 2022 (est.)	
Elementary & Secondary Education	2,435	19.6%	15,355	37.1%
Higher Education	828	6.7%	3,882	9.4%
Human Services	4,271	34.4%	15,035	36.4%
Public Safety	465	3.7%	2,044	4.9%
Environmental & Business Regulation	13	0.1%	58	0.1%
Economic Development & Infrastructure	13	0.1%	135	0.3%
Governmental Services & Elected Officials	4,392	35.4%	4,837	11.7%
Total	\$12,417	100.0%	\$41,344	100.0%

Source: Illinois State Comptroller's Office - Spending from appropriations and does not include statutory transfers. Amounts and percentages may not sum to totals based due to rounding.

State-Mandated Categorical Grant Programs
(Dollars in Thousands)
(105 ILCS 5/2-3.104)

Program Name	Appropriations							
	FY 2014	FY 2015	FY 2016	FY 2017	FY 2018	FY 2019	FY 2020	FY 2021
Sp Ed Personnel	439,061.8	430,588.8	440,114.6	442,400.0	0.0	0.0	0.0	0.0
Sp Ed Funding for Children	303,091.7	296,113.0	303,829.7	303,829.7	0.0	0.0	0.0	0.0
Sp Ed Private Tuition	218,947.7	225,013.1	233,000.0	233,000.0	135,265.5	135,265.5	152,320.0	152,320.0
Sp Ed Summer School	10,100.0	10,100.0	11,700.0	11,700.0	0.0	0.0	0.0	0.0
Sp Ed Transportation	440,500.0	440,363.8	452,785.4	450,500.0	387,682.6	387,682.6	387,682.6	387,682.6
Reg/Voc Transportation	206,947.1	201,178.2	205,808.9	205,808.9	262,909.8	262,909.8	289,200.8	289,200.8
Ill Free Lunch/Breakfast	14,300.0	9,000.0	9,000.0	9,000.0	9,000.0	9,000.0	9,000.0	9,000.0
Sp Ed Orphanage	105,000.0	92,862.5	95,000.0	103,472.5	73,477.6	73,000.0	91,700.0	93,000.0
Reg Ed Orphanage	<u>12,000.0</u>	<u>11,730.0</u>	<u>11,500.0</u>	<u>21,500.0</u>	<u>17,000.0</u>	<u>13,600.0</u>	<u>10,100.0</u>	<u>9,900.0</u>
Totals	1,749,948.3	1,716,949.4	1,762,738.6	1,781,211.1	885,335.5	881,457.9	940,003.4	941,103.4
Percentage Growth	-0.34%	-1.89%	2.67%	1.05%	-50.30%	-0.44%	6.64%	0.12%

100% Claims including Chicago 299 (No Audit Adjustments): Reimbursement Programs

Appropriation Year	FY 2014	FY 2015	FY 2016	FY 2017	FY 2018	FY 2019	FY 2020	FY 2021
School Year	2012-13	2013-14	2014-15	2015-16	2016-17	2017-18	2018-19	2019-20
Sp Ed Personnel	441,525.2	439,932.1	442,512.2	443,361.7	0.0	0.0	0.0	0.0
Sp Ed Funding for Children	303,091.7	302,928.9	303,829.7	303,829.7	0.0	0.0	0.0	0.0
Sp Ed Private Tuition	226,181.2	231,983.4	240,693.8	238,404.1	149,525.5	168,709.0	191,438.9	195,268.9
Sp Ed Summer School	11,151.9	11,617.4	12,756.2	12,348.2	0.0	0.0	0.0	0.0
Sp Ed Transportation	449,057.4	454,828.6	464,444.6	480,617.0	427,121.0	453,408.6	469,663.1	454,171.5
Reg/Voc Transportation	329,858.8	340,649.5	351,110.9	343,981.0	341,295.0	358,456.9	373,219.7	345,507.1

Appropriation Year	FY 2014	FY 2015	FY 2016	FY 2017	FY 2018	FY 2019	FY 2020	FY 2021
Ill Free Lunch/Breakfast	39,432.9	42,744.4	41,734.8	41,369.5	30,127.5	29,415.1	21,132.8	26,417.4
Sp Ed Orphanage	99,706.6	96,128.6	96,075.6	93,163.1	73,244.8	79,309.4	85,521.4	94,242.0
Reg Ed Orphanage	11,166.4	14,133.5	14,551.9	12,401.8	9,895.3	9,574.0	9,761.2	8,419.3

Pro-Ration Reimburse %	FY 2014	FY 2015	FY 2016	FY 2017	FY 2018	FY 2019	FY 2020	FY 2021
Sp Ed Personnel	100%	98%	100%	100%	0%	0%	100%	0%
Sp Ed Funding for Children	100%	98%	100%	99%	0%	0%	100%	0%
Sp Ed Private Tuition	94%	94%	94%	96%	90%	80%	94%	78%
Sp Ed Summer School	81%	75%	84%	89%	0%	0%	81%	0%
Sp Ed Transportation	97%	95%	97%	92%	91%	86%	97%	85%
Reg/Voc Transportation	74%	71%	70%	71%	84%	82%	74%	89%
Ill Free Lunch/Breakfast	36%	21%	22%	22%	30%	31%	36%	34%
Sp Ed Orphanage	100%	100%	100%	100%	100%	100%	100%	100%
Reg Ed Orphanage	100%	100%	100%	100%	100%	100%	100%	100%

Notes:

- Current fiscal year appropriations pay previous year claims, except for Illinois Free Lunch/Breakfast, Orphanage, and Bilingual programs.
- Appropriation and claim amounts include amounts funded through the Chicago Block Grants.

Receipts and Expenditures for Illinois Public School Districts
(Dollars in Millions)
(105 ILCS 5/2-3.11)

	FY 2012	FY 2013	FY 2014	FY 2015	FY 2016	FY 2017	FY 2018	FY 2019	FY 2020
Receipts									
Local Taxes/Payments in Lieu of Taxes	16,027.9	16,164.4	16,524.0	16,820.2	17,183.3	17,911.3	18,247.6	18,537.2	18,980.4
Other Local	1,249.1	1,240.8	1,188.1	1,232.4	1,306.7	1,411.6	1,619.9	1,876.5	1,823.4
General State Aid	4,308.8	4,246.4	4,391.1	4,376.0	4,639.2	4,988.9	6,306.9	6,681.2	7,035.9
Other State Funds	2,535.7	2,631.0	2,571.6	2,300.5	1,939.3	1,937.3	1,803.2	1,495.3	1,488.2
Federal Funds	<u>2,127.5</u>	<u>2,078.7</u>	<u>2,094.6</u>	<u>2,051.0</u>	<u>2,122.4</u>	<u>2,128.0</u>	<u>2,127.1</u>	<u>2,145.9</u>	2,256.1
	26,248.9	26,361.3	26,769.3	26,780.0	27,190.9	28,377.1	30,104.7	30,736.1	31,584.0
Expenditures									
Instruction	12,960.3	13,241.5	13,789.4	14,227.2	14,439.4	14,584.8	14,710.6	15,181.6	15,696.8
General Administration	893.1	887.1	904.8	908.7	904.7	914.1	926.6	976.7	987.9
Support Services	8,067.7	8,223.8	8,496.5	8,446.7	8,458.9	8,593.9	8,851.1	9,354.6	9,588.5
Community Services	121.4	129.7	136.9	143.2	142.3	142.8	163.9	172.8	183.3
Payments to Other Gov't. Units (In state, out of state)	732.0	728.7	725.4	709.4	725.3	706.9	766.7	775.8	834.1
Debt Service Retired	1,153.8	1,226.7	1,355.0	1,415.9	1,458.6	1,883.0	1,994.1	1,646.1	1,850.9
Debt Services (Interest)	907.2	921.9	917.4	930.9	971.8	998.3	1,056.7	1,056.8	1,089.8
Capital Outlay/Non- Capitalized Equip.	<u>1,988.1</u>	<u>1,932.1</u>	<u>1,974.6</u>	<u>2,012.0</u>	<u>1,987.5</u>	<u>1,870.8</u>	<u>2,193.0</u>	<u>2,736.6</u>	<u>2,882.1</u>
	26,823.6	27,291.6	28,300.0	28,7940.0	29,088.4	29,694.6	30,662.7	31,901.0	33,113.4

Source: School District Annual Financial Report (ISBE Form 50-35) Financial Data Table

Checked to the State Totals, Annual Report Card data, and ILEARN Financial Report

Public Schools Finance Statistics
(105 ILCS 5/2-3.11)

	District Type	Per Capita Tuition Charge	Operating Expense per Pupil
FY 2020	Elementary	\$12,563	\$14,058
	Secondary	17,534	18,806
	Unit	12,025	14,235
	ALL DISTRICTS	12,842	14,747
	Chicago SD 299	14,609	17,779
FY 2019	Elementary	\$12,563	\$14,058
	Secondary	17,534	18,806
	Unit	12,025	14,235
	ALL DISTRICTS	12,842	14,747
	Chicago SD 299	14,609	17,779
FY 2019	Elementary	\$12,422	\$13,976
	Secondary	17,178	18,529
	Unit	11,774	13,903
	ALL DISTRICTS	12,612	14,492
	Chicago SD 299	14,046	16,923
FY 2018	Elementary	\$11,698	\$13,370
	Secondary	16,282	17,749
	Unit	10,848	13,137
	ALL DISTRICTS	11,740	13,764
	Chicago SD 299	12,678	15,878
FY 2017	Elementary	\$11,655	\$12,859
	Secondary	16,463	17,519
	Unit	10,784	12,720
	ALL DISTRICTS	11,701	13,337
	Chicago SD 299	12,255	15,412
FY 2016	Elementary	\$11,236	\$12,504
	Secondary	15,912	17,044
	Unit	10,620	12,374
	ALL DISTRICTS	11,422	12,973
	Chicago SD 299	12,544	14,973
FY 2015	Elementary	\$10,925	\$12,173
	Secondary	15,398	16,494
	Unit	10,382	12,354
	ALL DISTRICTS	11,133	12,808
	Chicago SD 299	12,229	15,310

District types:

- Elementary School Districts: PreK-8
- Secondary (High) School Districts: 9-12
- Unit School Districts: PreK-12

Source: School Business Services Operating Expense Per Pupil (OEPP)/Per Capita Tuition Charge (PCTC)/Average Daily Attendance (ADA) State Totals Historical File.

Total Resources per Pupil Enrolled
(105 ILCS 5/2-3.11)

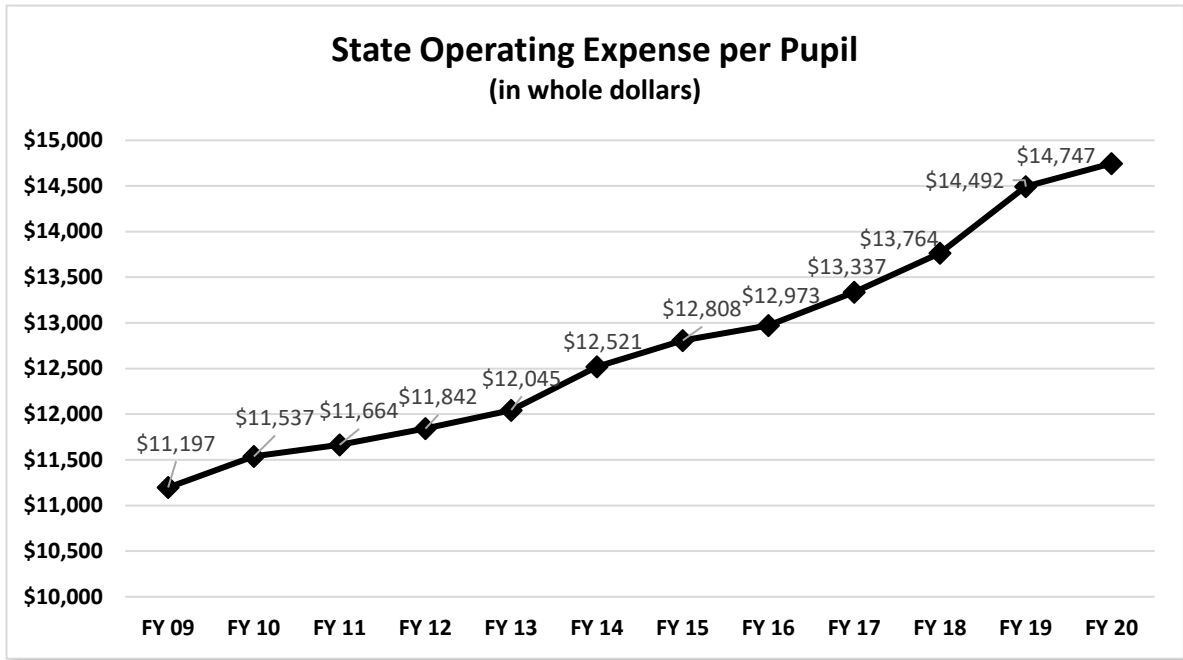
Fiscal Year	Total Resources^a	Fall Enrollment^b	Total Resources Per Pupil Enrolled^c	% Change in Dollars Per Pupil Enrolled
2021	\$45,575.8	1,887,316	\$24,148.5	25.1%
2020	37,768.1	1,957,018	19,300	8.6
2019	35,260.7	1,984,519	17,768	4.5
2018	34,106.5	2,005,153	17,009	5.1
2017	32,814.0	2,028,162	16,179	5.6
2016	31,289.8	2,041,779	15,325	4.7
2015	30,107.2	2,057,858	14,630	1.6
2014	29,861.2	2,073,480	14,401	4.0
2013	28,453.1	2,054,155	13,851	0.7
2012	28,701.7	2,087,628	13,748	1.5
2011	28,091.7	2,074,806	13,539	-0.2
2010	28,571.8	2,105,779	13,568	9.0
2009	26,293.9	2,112,132	12,449	7.0
2008	24,589.0	2,113,435	11,635	8.8
2007	22,648.4	2,118,692	10,690	6.2
2006	21,264.7	2,111,706	10,070	2.4
2005	20,631.7	2,097,503	9,836	2.9
2004	20,085.2	2,100,961	9,560	4.6
2003	19,051.5	2,084,187	9,141	2.2
2002	18,528.1	2,071,391	8,945	2.0
2001	17,984.7	2,051,021	8,769	5.2
2000	16,827.2	2,018,316	8,337	7.1

Note: Resources and percent changes have been updated for fiscal years 2010 through 2015.

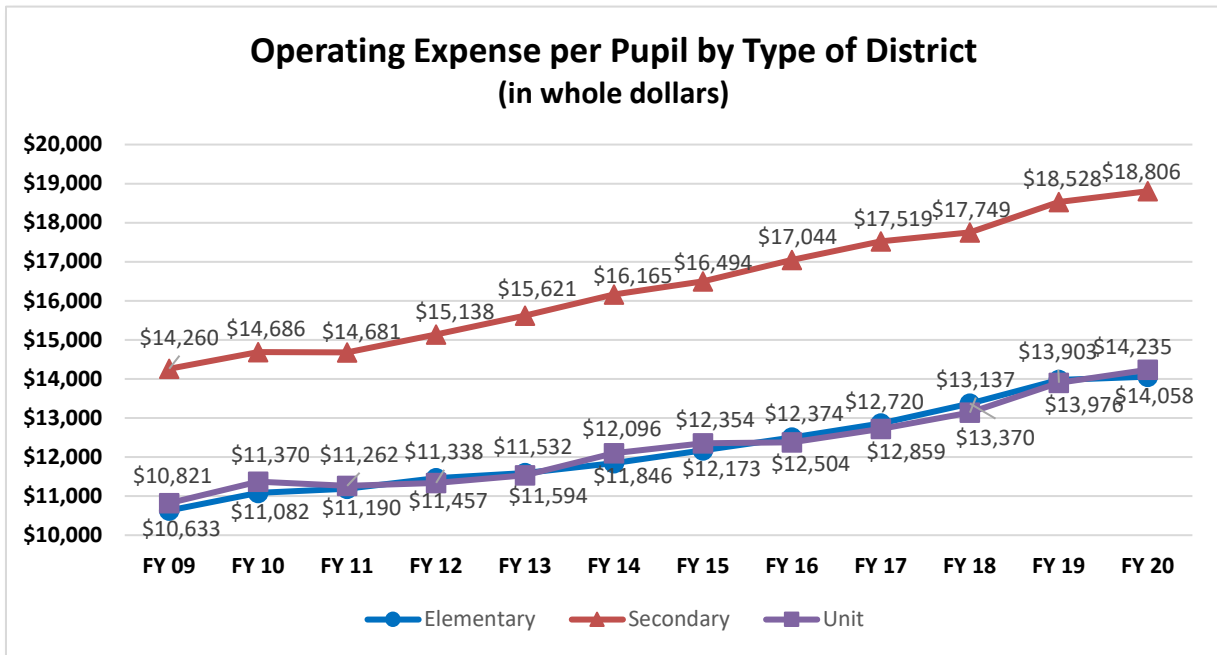
^a In millions; includes state, federal, and local funds and pensions.

^b Prior to FY 2016, Fall Enrollment was a snapshot of student enrollment taken from the Student Information System (SIS) as of Oct. 15. Beginning in FY 2016, Fall Enrollment is the State Report Card total that has been verified by districts.

^c In whole dollars.

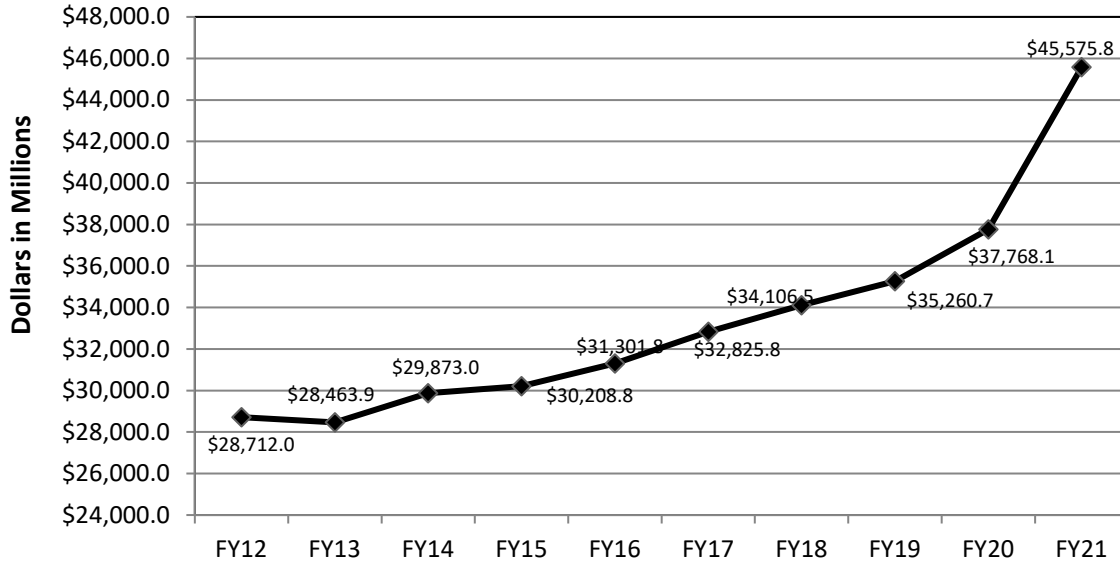


Source: School Business Services OEPP/PCTC/ADA State Totals Historical File.

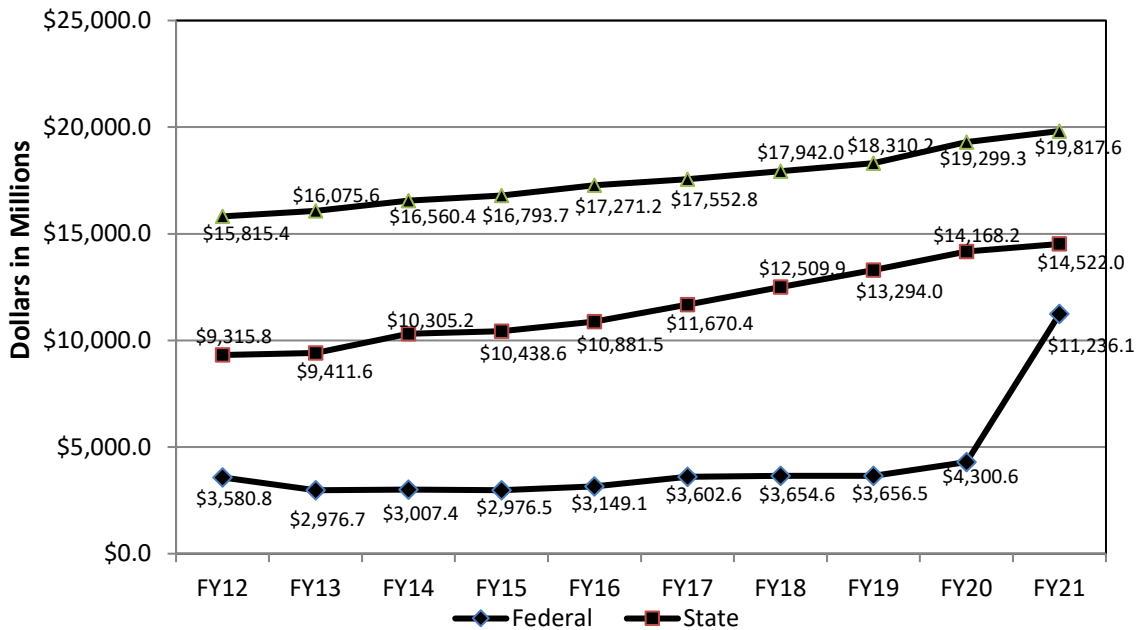


Source: School Business Services OEPP/PCTC/ADA State Totals Historical File.

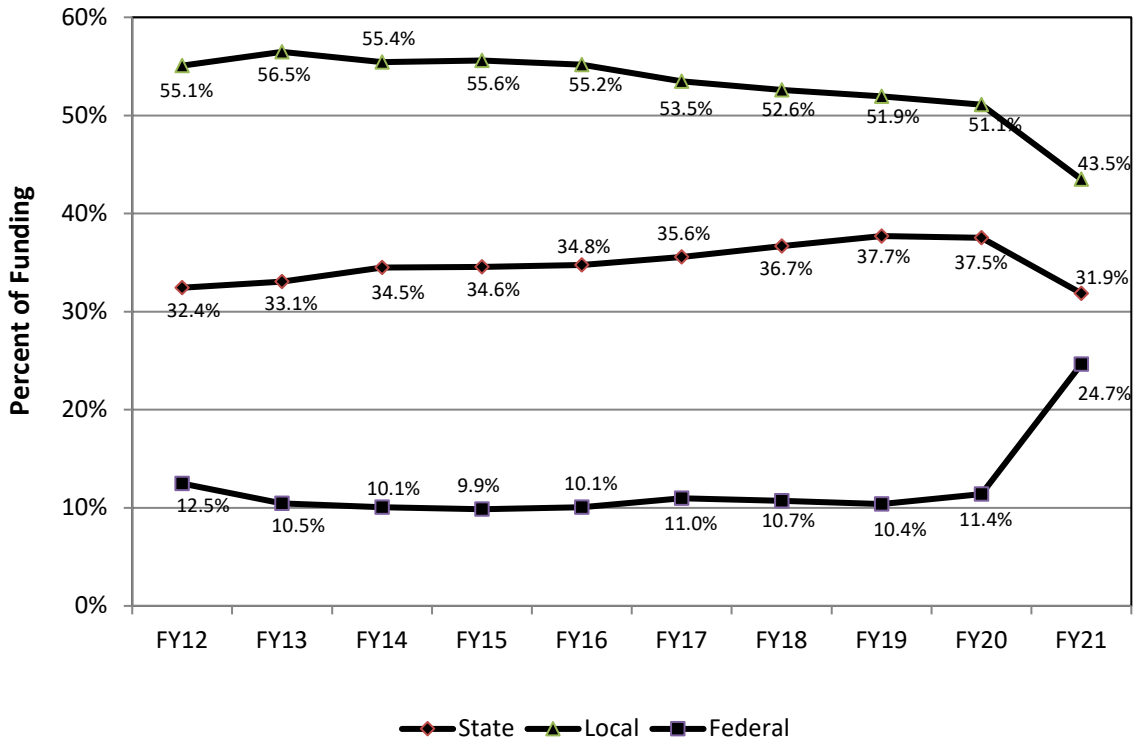
**Total Funding
Elementary and Secondary Education**



**State, Local and Federal Funding
Elementary and Secondary Education**



Percentages of State, Local and Federal Funding



SCHOOLS AND DISTRICTS

A Profile of Illinois Public Schools in 2020-21 Selections from School Report Card Files (regular public schools only)

SUMMARY

852 districts (regular public)
1,887,316 students
48.1% low-income enrollment

3,849 schools
53.3% students of color
12.9% EL enrollment

TRENDS

Number of school districts 852. The number of operating school districts with enrollment decreased from 868 in 2011 to 852 in 2021; there were 368 elementary districts, 96 high school districts and 388 unit districts.

Decrease in the number of public schools. The number of public schools has decreased over the past decade from 3,904 in 2011 to 3,849 in 2021. These figures include charter schools and regular public schools that issue school report cards.

Decrease in the average school size. The average school size has decreased from 531 students in 2011 to 480 in 2021.

Student enrollment decreased. Student enrollment in regular Illinois public schools decreased from 2,074,806 in 2011 to 1,887,316 in 2021, according to the Fall Housing enrollment counts. This count differs from the enrollment in the Illinois Report Card, which is taken on Oct. 1 and is verified by district superintendents. Calculations involving enrollment will either be based on Fall Housing (SIS) or Illinois Report Card data, which will be noted. Student enrollment has been based on serving school since 2017, and home school prior to that.

Low-income enrollment remained steady. The number of low-income students remained the same from 48.1 percent of the enrollment in 2011 to 48.1 percent in 2021. Pupils are considered low-income if they are from families receiving public aid, are living in institutions for neglected or delinquent children, are being supported in foster homes with public funds, or are eligible for free or reduced-price lunches.

Percentage of students of color exceeded 50 percent. Students who are Black, Hispanic, Asian, American Indian or Alaskan Native, Hawaiian or Other Pacific Islander, or Two or More Races made up 53.3 percent of the enrollment in 2021, up from 48.6 percent in 2011.

Number of English Learners (EL) increased in last decade. The percentage of EL students increased from 8.8 percent in 2011 to 12.9 percent in 2021. EL students include those who are eligible for bilingual education.

Average class size decreased slightly in grades K-8 and increased slightly in grades 9-12. Between 2011 and 2021, the average class sizes varied:

- Kindergarten --- from 20.9 to 19.4
- Grade 1 --- from 21.6 to 19.8
- Grade 3 --- from 22.3 to 20.0
- Grade 6 --- from 22.0 to 21.2

Grade 8 --- from 21.3 to 21.3
High School (grades 9-12) --- from 19.2 to 20.4

Percentage of teachers of color increased in the last decade. Teachers of color accounted for 17.6 percent of the classroom teachers in 2011 compared to 18.0 percent in 2021. Teachers of color include those who are Black, Hispanic, Asian, American Indian or Alaskan Native, Hawaiian or Other Pacific Islander, Two or More Races, or unknown.

No change in the percentage of male classroom teachers. There is no change in the percentage of male teachers, remaining steady from 23.1 percent of the teaching force in 2011 to 23.1 percent in 2021.

Percentage of teachers with graduate degrees decreased. In 2021, teachers who had a master's degree or higher accounted for 59.5 percent of the classroom teachers in Illinois public schools, down from 60.4 percent in 2011.

Pupil-teacher ratio remained steady at the elementary level and decreased at the secondary level. Between 2011 and 2021, the elementary pupil-teacher ratio decreased slightly from 18.8:1 to 16.9:1, while the secondary pupil-teacher ratio decreased slightly from 18.9:1 to 18.4:1.

Illinois Public School Districts by Type
(105 ILCS 5/2-3.11)

School Year	Elementary Districts	Secondary Districts	Unit Districts	Total Districts ^a
2020-21	368	96	388	852
2019-20	368	96	388	852
2018-19	368	96	388	852
2017-18	368	96	388	852
2016-17	368	96	388	852
2015-16	369	98	386	853
2014-15	373	99	385	857
2013-14	374	100	386	860
2012-13	375	100	387	862
2011-12	377	100	388	865
2010-11	378	101	388	867
2009-10	378	101	389	868
2008-09	378	101	390	869
2007-08	378	102	390	870
2006-07	376	102	395	873
2005-06	377	102	395	874
2004-05	379	103	399	882
2003-04	381	103	404	888
2002-03	383	103	407	893
2001-02	383	103	407	893
2000-01	383	103	408	894
1999-00	384	103	409	896

^a Does not include five state-operated school systems -- the two state laboratory schools, the Illinois Mathematics and Science Academy, and the Illinois Department of Human Services Division of Rehabilitation state schools.

Sources: Fall Housing Enrollment, Entity Profile System, and CDS File Record Counts.

Comparison of Public School Districts by Type and Enrollment 2010-11 and 2020-21
(105 ILCS 5/2-3.11)

District Enrollment	Elementary Districts		Secondary Districts		Unit Districts		Total Districts*	
	10-11	20-21	10-11	20-21	10-11	20-21	10-11	20-21
25,000 or more	0	0	0	0	5	5	5	5
10,000 to 24,999	4	4	2	2	12	13	18	19
5,000 to 9,999	10	10	13	10	26	24	49	44
2,500 to 4,999	52	51	22	26	31	29	105	106
1,000 to 2,499	98	100	25	23	110	104	233	227
600 to 999	54	54	17	17	80	79	151	150
300 to 599	58	51	11	12	95	104	164	167
Fewer than 300	102	98	10	6	30	30	142	134
Total	378	368	100	96	389	388	867	852

* Does not include one non-operating district, Department of Corrections/Juvenile Justice school district, state-operated districts, special education districts, and state charter districts.

Sources: Fall Housing Enrollment, Entity Profile System, and CDS File Record Counts.

Comparison of Public and Nonpublic Attendance Centers 2010-11 and 2020-21
(105 ILCS 5/2-3.11)

Public Attendance Centers				Nonpublic Attendance Centers				
	10-11	20-21		10-11	20-21		10-11	20-21
Elementary	2,603	2,432	Elementary*	843	685			
Junior High	618	605	Secondary	122	115			
Secondary	689	701	Unit	128	100			
Special Education and Others	368	448	Special Education	38	3			
Total	4,278	4,186	Total	1,131	903			

* Includes Junior High.

Note: These counts include all attendance centers, not just the regular schools included in the Illinois Interactive Report Card. Only registered Nonpublic Attendance Centers are used for Nonpublic Attendance Center counts for Elementary, Secondary, and Unit entities.

Sources: Fall Housing Enrollment, Entity Profile System, and CDS File Record Counts.

**Public School Recognition Committee Act or Omissions Status Report for the 2020-21
School Year
(105 ILCS 5/1A-4)**

Region	Facility	Final FY Assignment	Date of District Notification
ROE #28: Bureau, Henry and Stark Counties	Spring Valley CCSD 99	Recognized Pending Further Review	November 22, 2021
ROE #28: Bureau, Henry and Stark Counties	John F Kennedy Elem School	Recognized Pending Further Review	November 22, 2021
ROE #28: Bureau, Henry and Stark Counties	AIWood CUSD 225	Recognized Pending Further Review	November 22, 2021
ROE #28: Bureau, Henry and Stark Counties	AIWood Middle/High School	Recognized Pending Further Review	November 22, 2021
ROE #28: Bureau, Henry and Stark Counties	AIWood Elem School	Recognized Pending Further Review	November 22, 2021
ROE #28: Bureau, Henry and Stark Counties	Bradford CUSD 1	Recognized Pending Further Review	November 22, 2021
ROE #28: Bureau, Henry and Stark Counties	Bradford Jr High School	Recognized Pending Further Review	November 22, 2021
ROE #28: Bureau, Henry and Stark Counties	Kewanee CUSD 229	Recognized Pending Further Review	November 22, 2021
ROE #28: Bureau, Henry and Stark Counties	Kewanee High School	Recognized Pending Further Review	November 22, 2021
ROE #28: Bureau, Henry and Stark Counties	Central Elem	Recognized Pending Further Review	November 22, 2021
ROE #28: Bureau, Henry and Stark Counties	Irving Elem School	Recognized Pending Further Review	November 22, 2021
ROE #28: Bureau, Henry and Stark Counties	Dalzell SD 98	Recognized Pending Further Review	November 22, 2021
ROE #28: Bureau, Henry and Stark Counties	Dalzell Grade School	Recognized Pending Further Review	November 22, 2021
ROE #50: St. Clair County	Marissa CUSD 40	Recognized Pending Further Review	November 22, 2021
ROE #50: St. Clair County	Marissa Jr & Sr High School	Recognized Pending Further Review	November 22, 2021
ROE #50: St. Clair County	Marissa Elem School	Recognized Pending Further Review	November 22, 2021

STUDENTS

Public and Nonpublic Prekindergarten through Postgraduate Fall Pupil Enrollment (105 ILCS 5/2-3.11)

School Year	Public	Nonpublic	Total
2020-21	1,887,316	176,944	2,064,260
2019-20	1,957,018	193,574	2,150,592
2018-19	1,984,519	198,643	2,183,162
2017-18	2,005,153	203,864	2,205,393
2016-17	2,028,162	205,263	2,233,425
2015-16	2,041,779	214,631	2,256,410
2014-15	2,057,858	220,144	2,278,002
2013-14	2,073,480	219,700	2,293,180
2012-13	2,054,155	222,122	2,276,277
2011-12	2,087,628	237,377	2,325,005
2010-11	2,074,806	241,323	2,316,129
2009-10	2,105,779	243,680	2,349,459
2008-09	2,112,132	249,373	2,361,505
2007-08	2,113,435	265,276	2,378,711
2006-07	2,118,692	244,188	2,362,880
2005-06	2,111,706	267,651	2,379,357
2004-05	2,097,503	225,765	2,323,268
2003-04	2,100,961	312,891	2,413,780
2002-03	2,084,187	306,047	2,390,234
2001-02	2,071,391	317,198	2,388,589
2000-01	2,051,021	323,231	2,374,252
1999-00	2,018,316	323,869	2,342,185

Notes:

- Fall Housing Enrollment is a snapshot of student enrollment as of Oct. 1. Prior to FY 2016, Fall Enrollment was a snapshot of student enrollment as of Sept. 30. Beginning in FY 2016, Fall Enrollment is the State Report Card total that has been verified by districts.
- Nonpublic schools report data voluntarily on an annual basis.

Sources: Student Information System and Entity Profile System.

Comparison of Public School Enrollment 2010-11 and 2020-21
(105 ILCS 5/2-3.11)

Grade Level	2010-11	2020-21	Percent Change
Pre-K (not Bilingual, Special Ed)	67,566	38,415	-43.1%
Pre-K Bilingual	2,883	13,652	373.5%
Pre-K Special Ed	18,200	17,069	-6.2%
Kindergarten	145,734	120,110	-17.6%
1 st Grade	153,437	127,671	-16.8%
2 nd Grade	151,287	127,907	-15.5%
3 rd Grade	153,516	130,321	-15.1%
4 th Grade	153,301	134,540	-12.2%
5 th Grade	154,241	136,665	-11.4%
6 th Grade	153,175	141,642	-7.5%
7 th Grade	153,981	146,930	-4.6%
8 th Grade	153,986	149,255	-3.1%
Elementary Total	1,461,307	1,284,177	-12.1%
9 th Grade	169,759	153,493	-9.6%
10 th Grade	169,417	152,533	-10.0%
11 th Grade	151,059	148,759	-1.5%
12 th Grade	146,603	149,423	1.9%
Secondary Total	636,838	604,208	-5.1%
Ungraded	0	0	0%
Total Elementary & Secondary	2,098,145	1,888,385	-10.0%

Notes:

- Public school enrollment includes Regional Offices of Education, Department of Corrections/ Juvenile Justice, special education, and regular education schools.
- Prior to FY 2016, Fall Enrollment was a snapshot of student enrollment taken from the Student Information System as of Sept. 30. Beginning in FY 2016, Fall Enrollment is the State Report Card total that has been verified by districts.

Source: Student Information System.

Comparison of Public School Enrollment By Racial/Ethnic Distribution 2010-11 and 2020-21

Race	2010-11		2020-21	
	Number	%	Number	%
White Non-Hispanic	1,077,037	51.3	880,891	46.7
Black Non-Hispanic	386,754	18.4	312,609	16.6
Hispanic	478,050	22.8	510,387	27
Asian, Hawaiian, and Other Pacific Islander	93,421	4.2	104,349	5.5
American Indian or Alaskan Native	7,549	0.4	4,650	0.2
Two or More Races	59,946	2.9	74,430	3.9
Total Students	2,098,145	100	1,887,316	100
Total Students of Color	1,021,108	48.7	1,006,425	53.3

Source: Fall Housing Report (Student Information System). ISBE Department of Data Strategies and Analytics (DSA) Source:

- SY21 data- IIRC, Students, Racial\Ethnic Diversity
- SY11 data was pulled from SY11 Annual Report

Comparison of Nonpublic School Enrollment 2010-11 and 2020-21 (105 ILCS 5/2-3.11)

Grade Level	2010-11	2020-21	Percent Change
Pre-K	31,762	17,876	-43.7%
Kindergarten	19,425	13,606	-30.0%
1 st Grade	17,162	12,740	-25.8%
2 nd Grade	16,534	12,174	-26.4%
3 rd Grade	16,013	11,885	-25.8%
4 th Grade	15,850	11,778	-25.7%
5 th Grade	16,041	11,873	-26.0%
6 th Grade	15,862	12,382	-21.9%
7 th Grade	15,681	12,160	-22.5%
8 th Grade	15,810	12,765	-19.3%
Ungraded Elementary (PK-8)	406	1,159	185.5%
Elementary Special Ed (PK-8)	3,543	1,118	-68.4%
Elementary Total	184,089	131,516	-28.6%
9 th Grade	13,774	11,221	-18.53%
10 th Grade	13,674	11,226	-17.90%
11 th Grade	13,478	11,137	-17.37%
12 th Grade	13,376	11,210	-16.19%
Ungraded Secondary	446	39	-91.26%
Secondary Special Ed (9-12)	2,486	595	-76.07%
Secondary Total	57,234	45,428	-20.63%
Total Elementary & Secondary	241,323	176,944	-26.68%

Note: Nonpublic schools report data voluntarily on an annual basis.

English Learner Enrollments by Native Language 2021-21

Home Language	Chicago SD 299 Number	Non-Chicago Number	Statewide Total Number
Spanish	47,002	124,232	171,234
Other (Identified)	12,218	864	13,082
Arabic	1,321	7,315	8,636
Polish	598	5,265	5,863
Urdu	612	2,861	3,473
Filipino (Tagalog)	320	1,648	1,968
Gujarati	230	1,721	1,951
Russian	173	1,757	1,930
Mandarin (Chinese)	368	1,005	1,373
French	180	1,332	1,512
Telugu (Telegu)	61	1,259	1,320
Vietnamese	318	1,093	1,411
Hindi	117	1,115	1,232
Ukrainian	313	848	1,161
Cantonese (Chinese)	717	252	969
Korean	39	788	827
Assyrian (Syriac/Aramaic)	108	640	748
Tamil	40	641	681
Malayalam	22	724	746
Romanian	98	591	689
Other	2,396	11,238	13,634
Total	67,251	167,189	234,440

Source: Student Information System.

English Learner Students by Transition Status and School Year Outcome 2020-21
(105 ILCS 5/1A-4)

	Chicago SD 299	Non-Chicago
Transition Status	Number	Number
Transitioned ^a	n/a ⁵	n/a ⁵
Not Transitioned	n/a ⁵	n/a ⁵
Total Students	n/a ⁵	n/a ⁵
Outcome Status		
Promoted to next grade or otherwise retained	n/a ⁵	n/a ⁵
Transferred ^b	n/a ⁵	n/a ⁵
Graduated	n/a ⁵	n/a ⁵
Dropped out ^c	n/a ⁵	n/a ⁵
Other outcome ^d	n/a ⁵	n/a ⁵
Total Students	n/a ⁵	n/a ⁵

Notes: ^a English Learners who attained English language proficiency as defined by the state (a 4.8 Overall Composite Proficiency Level on the ACCESS for ELLs measure) in 2019-20. English Learners who did not transition out of the program were promoted to the next grade, retained in the same grade, graduated, transferred, dropped out, or another outcome.

^b Transferred includes students transferred to another district, home schooled, private schooled, or moved out of the United States, moved to another school district out of Illinois, transfer to another public school district in Illinois.

^{3.} Dropped out includes students who dropped out, transferred to a GED program, or moved not known to be continuing.

^{4.} Other outcomes include death, age out, the certificate of completion, Victim of a Violent Crime, and Change in Serving School or PDA.

^{5.} Due to the timing of student Assessments in school year 2020-2021, ACCESS Assessment data and related metrics are not available at the time of the publication of this report. Finalized SY2021 Assessment data will be released via the Illinois Report Card on April 27, 2022.

Source: Student Information System.

School Districts That Served More Than 1,000 English Learners 2020-21

School District Name	EL Enrollment	% of Statewide EL Enrollment
City of Chicago SD 299	69,033	28.4%
SD U-46	13,230	5.4%
Aurora East USD 131	5,715	2.3%
Waukegan CUSD 60	5,712	2.3%
Cicero SD 99	5,557	2.3%
Rockford SD 205	5,099	2.1%
CUSD 300	3,491	1.4%
Palatine CCSD 15	3,271	1.3%
Wheeling CCSD 21	2,993	1.2%
Aurora West USD 129	2,989	1.2%
Joliet PSD 86	2,955	1.2%
Schaumburg CCSD 54	2,928	1.2%
Valley View CUSD 365U	2,820	1.2%
Indian Prairie CUSD 204	2,776	1.1%
Comm Cons SD 59	2,682	1.1%
Plainfield SD 202	2,444	1.0%
West Chicago ESD 33	2,239	0.9%
Round Lake CUSD 116	2,133	0.9%
Addison SD 4	1,654	0.7%
J S Morton HSD 201	1,614	0.7%
CUSD 308	1,559	0.6%
East Maine SD 63	1,466	0.6%
Maywood-Melrose Park-Broadview 89	1,461	0.6%
Belvidere CUSD 100	1,446	0.6%
CCSD 62	1,436	0.6%
North Palos SD 117	1,278	0.5%
Woodland CCSD 50	1,259	0.5%
Champaign CUSD 4	1,253	0.5%
Burbank SD 111	1,236	0.5%
Township HSD 214	1,208	0.5%
CUSD 200	1,170	0.5%
Naperville CUSD 203	1,162	0.5%
North Chicago SD 187	1,110	0.5%
Evanston CCSD 65	1,083	0.4%
Mannheim SD 83	1,076	0.4%
Moline-Coal Valley CUSD 40	1,018	0.4%
Berwyn South SD 100	1,011	0.4%

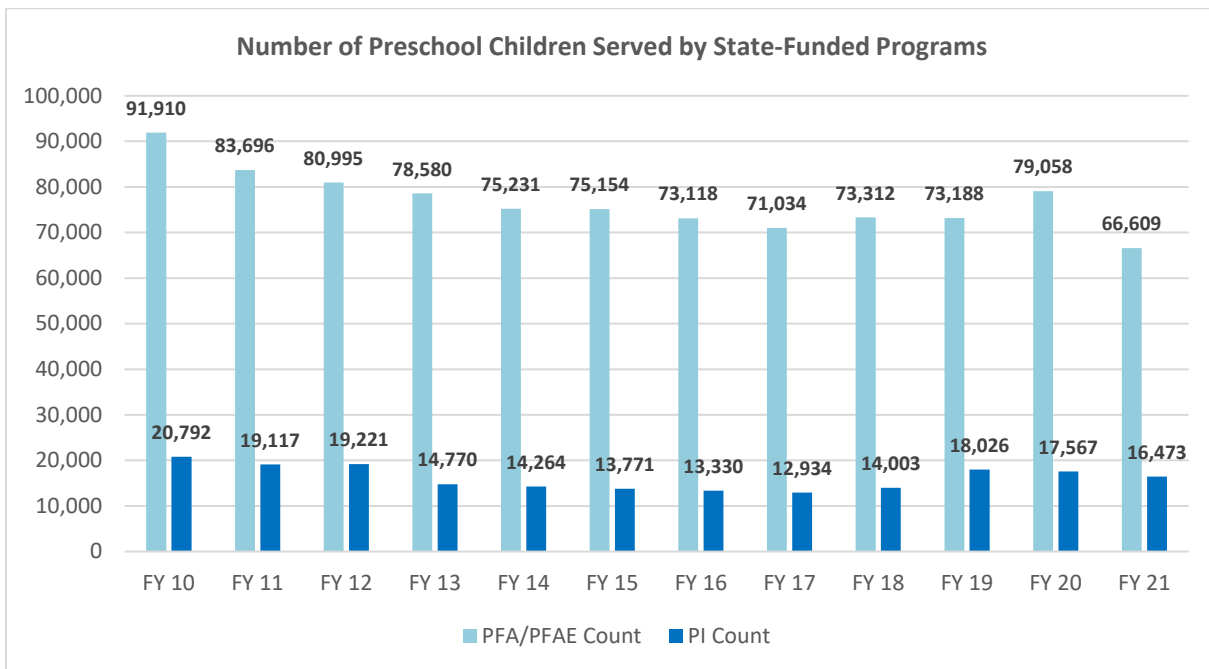
Source: Student Information System.

English Learner Enrollment

	2015-16	2016-17	2017-18	2018-19	2019-20	2020-21
Chicago District 299	62,583	62,300	66,755	70,541	68,375	69,033
Non-Chicago Districts	139,391	143,285	157,751	170,552	175,050	174,275
Total Enrollment	201,974	205,585	224,506	241,093	245,502	243,308

Source: Student Information System.

Number of Preschool Children Served by State-Funded Programs



Note: Each fiscal year has two categories - Preschool for All (PFA) + Preschool for All Expansion (PFAE) Count \ Prevention Initiative (PI) Count.

Sources: Student Information System, Early Childhood Electronic Grant Management System.

High School Graduates*
(105 ILCS 5/2-3.11)

School Year	Public	Nonpublic	Total
2020-21	137,219	11,868	149,087
2019-20*	136,606	12,178	148,784
2018-19	136,534	13,278	149,812
2017-18	139,666	13,343	153,009
2016-17	139,133	14,082	153,215
2015-16	137,296	12,541	149,837
2014-15	137,290	15,633	152,923
2013-14	139,056	15,598	154,654
2012-13	139,187	14,230	153,417
2011-12	134,260	17,514	151,774
2010-11	132,648	17,038	149,686
2009-10	139,870	17,038	156,908

Note: Nonpublic schools report data voluntarily on an annual basis.

* Data possibly impacted by suspension of in-person instruction. Please use with caution when interpreting results and trends.

Sources: Student Information System; Nonpublic Registration, Enrollment, and Staff Report.

**2020-21 High School Dropout Rate* by Grade Level, Gender, and Race/Ethnicity
(105 ILCS 5/1A-4)**

	9th Grade		10th Grade		11th Grade		12th Grade		Total		All
	Male	Female	Male	Female	Male	Female	Male	Female	Male	Female	
White											
# of Dropouts	130	83	868	728	1,173	957	1,406	887	3,577	2,655	6,232
Statewide Enrollment	37,351	35,192	38,183	35,784	38,418	35,863	38,842	35,743	152,794	142,582	295,376
DROPOUT RATE	0.3%	0.2%	2.3%	2.0%	3.1%	2.7%	3.6%	2.5%	2.3%	1.9%	2.1%
Black-African American											
# of Dropouts	254	141	715	464	726	509	749	492	2,444	1,606	4,050
Statewide Enrollment	13,282	12,804	13,389	12,643	12,408	12,214	12,025	11,856	51,104	49,517	100,621
DROPOUT RATE	1.9%	1.1%	5.3%	3.7%	5.9%	4.2%	6.2%	4.1%	4.8%	3.2%	4.0%
Am Indian-Alaskan											
# of Dropouts	1	2	18	8	11	5	17	5	47	20	67
Statewide Enrollment	195	182	206	182	182	142	230	173	813	679	1,492
DROPOUT RATE	0.5%	1.1%	8.7%	4.4%	6.0%	3.5%	7.4%	2.9%	5.8%	2.9%	4.5%
Asian											
# of Dropouts	7	5	54	41	57	22	38	26	156	94	250
Statewide Enrollment	4,066	3,800	4,151	4,069	4,128	4,065	4,129	4,034	16,474	15,968	32,442
DROPOUT RATE	0.2%	0.1%	1.3%	1.0%	1.4%	0.5%	0.9%	0.6%	0.9%	0.6%	0.8%
Native Hawaiian/Pacific Islander											
# of Dropouts	0	1	0	2	5	1	4	1	9	5	14
Statewide Enrollment	75	78	73	113	77	72	93	62	318	325	643
DROPOUT RATE	0.0%	1.3%	0.0%	1.8%	6.5%	1.4%	4.3%	1.6%	2.8%	1.5%	2.2%
Hispanic											
# of Dropouts	183	93	733	471	906	518	1,155	565	2,977	1,647	4,624
Statewide Enrollment	22,363	21,222	22,660	21,002	21,131	20,426	20,574	19,477	86,728	82,127	168,855
DROPOUT RATE	0.8%	0.4%	3.2%	2.2%	4.3%	2.5%	5.6%	2.9%	3.4%	2.0%	2.7%
Multiracial											
# of Dropouts	37	28	112	61	133	73	140	100	422	262	684
Statewide Enrollment	2,938	2,856	2,694	2,572	2,577	2,570	2,407	2,336	10,616	10,334	20,950
DROPOUT RATE	1.3%	1.0%	4.2%	2.4%	5.2%	2.8%	5.8%	4.3%	4.0%	2.5%	3.3%
Totals											
# of Dropouts	612	353	2,500	1,775	3,011	2,085	3,509	2,076	9,632	6,289	15,921
Statewide Enrollment	80,270	76,134	81,356	76,365	78,921	75,352	78,300	73,681	318,847	301,532	620,379
DROPOUT RATE	0.8%	0.5%	3.1%	2.3%	3.8%	2.8%	4.5%	2.8%	3.0%	2.1%	2.6%
Special Population		EL		Migrant		FRL		IEP			
# of Dropouts		1,741		8		10,490		2,553			
Statewide Enrollment		42,236		56		271,873		86,818			
Dropout Rate		4.1%		14.3%		3.9%		2.9%			

Source: Student Information System. | Note: * Data possibly impacted by suspension of in-person instruction. Please use with caution when interpreting results and trends. Data amended after initial submission to the Illinois General Assembly.

**Selected School Report Card Variables and Statewide Trend Data
(105 ILCS 5/1A-4 & 5/2-3.11)**

Report Card Variable	2011-12	2012-13	2013-14	2014-15	2015-16	2016-17	2017-18	2018-19	2019-20	2020-21
Enrollment Percentage										
White	51.0%	50.6%	49.9%	49.3%	48.8%	48.5%	48.0%	47.6%	47.5%	46.7%
Black	18.0%	17.6%	17.5%	17.5%	17.3%	17.0%	16.8%	16.7%	16.6%	16.6%
Hispanic	23.6%	24.1%	24.6%	25.1%	25.5%	25.7%	26.2%	26.4%	26.6%	27%
Asian	4.2%	4.3%	4.5%	4.6%	4.7%	4.9%	5.1%	5.1%	5.2%	5.4%
Native Hawaiian/ Pacific Islander	0.1%	0.1%	0.1%	0.1%	0.1%	0.1%	0.1%	0.1%	0.1%	0.1%
Native American	0.3%	0.3%	0.3%	0.3%	0.3%	0.4%	0.3%	0.3%	0.3%	0.2%
Two or More Races	2.8%	3.0%	3.1%	3.1%	3.2%	3.4%	3.5%	3.8%	3.8%	3.9%
Total Enrollment^a	2,066,692	2,054,155	2,046,857	2,054,556	2,041,779	2,028,162	2,005,153	1,984,519	1,957,018	1,887,316
Oper Expend Per Pupil^b	\$11,664	\$11,842	\$12,045	\$12,521	\$12,821	\$12,973	\$13,337	\$13,763.5	\$14,492	\$14,747
Graduation Rate^c	82.3%	83.2%	86.0%	85.6%	85.5%	87.0%	85.4%	85.9%	88.0%	86%
Low-Income Enrollment	49.0%	49.9%	51.5%	54.2%	49.9%	50.2%	49.4%	48.8%	48.5%	48.1%
EL Enrollment	9.4%	9.5%	9.5%	10.3%	10.5%	10.7%	11.7%	12.1%	12.5%	12.9%
Dropout Rate^c	2.5%	2.4%	2.2%	2.3%	2.0%	2.1%	2.1%	4.2%	3.5%	2.6%
Chronic Truancy Rate^c	8.6%	9.8%	8.7%	8.7%	9.8%	10.8%	11.2%	13.4%	9.6%	22.8%
Mobility Rate^c	7.6%	7.3%	7.0%	6.7%	6.9%	6.9%*	6.9%	7.1%	6.2%	6.1%
Student Attendance Rate^c	94.4%	94.2%	94.5%	94.2%	94.4%	94.0%	93.9%	94.0%	95.4%	92.5%
Parental Contact^d	95.3%	95.5%	95.7%	95.2%	95.3%	94.9%	89.0%	92.6%	n/a	n/a
Average Class Size										
Kindergarten	20.9	21.1	21.2	20.7	20.4	19.1	19.0	21.5	19.1	19.4
Gr 1	21.2	21.5	21.6	21.6	21.4	19.8	19.0	21.3	20.8	19.8
Gr 3	22	21.9	22.5	22.4	22.5	20.8	20.0	22.0	21.9	20.0
Gr 6	22.4	23.1	23.1	22.7	22.7	21.3	21.0	23.2	23.1	21.2
Gr 8	21.5	22.2	22.6	22.2	21.8	20.6	20.0	22.6	22.5	21.3
High School	19.2	19.9	19.4	19.4	19	19.5	20.0	21.8	21.6	20.4

Note: District statistics include charter school information.

^a Enrollment figures taken from the Illinois Report Card. Report Card enrollment is taken as of Oct. 1 and must be verified by the district superintendent.

^b Prior year expenditures.

^c 2019-20 data possibly impacted by suspension of in-person instruction. Please use with caution when interpreting results and trends.

^d Parental contact data was not available in 2019-20 as 5Essentials Survey data was not collected.

* * Beginning in FY 2017, the student mobility rate replaced the mobility incident rate. ISBE recalculated mobility rates back to SY 2012.

STUDENT PERFORMANCE

State Accountability Assessments

As part of the Illinois Accountability System, students in grades 3-8 take the Illinois Assessment of Readiness (IAR). High school students have taken the SAT since 2017. The IAR replaced the Partnership for Assessment of Readiness for College and Careers (PARCC) consortium test.

In grades 3 through 8, final district- and school-level results indicate student performance at five performance levels in English language arts and mathematics. In high school, results indicate student performance at four performance levels in English language arts and mathematics. The table below displays the statewide average percentage of students who meet or exceed standards.

NOTE: Assessment data was collected in school year 2020-21 during a Spring testing window and a Fall testing window. This flexibility was per guidance provided from the US Department of Education letter dated February 22, 2021.

<u>English Language Arts</u>	<u>2017</u>	<u>2018</u>	<u>2019</u>	<u>2020</u>	<u>2021</u>
Grade 3	36.2	37.0	36.3	n/a	n/a
Grade 4	37.1	38.5	36.7	n/a	n/a
Grade 5	36.6	35.6	37.8	n/a	n/a
Grade 6	34.9	34.0	35.0	n/a	n/a
Grade 7	40.0	39.8	41.3	n/a	n/a
Grade 8	37.4	36.4	39.6	n/a	n/a
High School %	39.8	36.9	36.6	n/a	n/a
High School Score	511.5	505.7	497.5	n/a	n/a
<u>Mathematics</u>	<u>2017</u>	<u>2018</u>	<u>2019</u>	<u>2020</u>	<u>2021</u>
Grade 3	39.2	37.8	40.6	n/a	n/a
Grade 4	30.8	31.5	33.5	n/a	n/a
Grade 5	29.6	30.8	29.8	n/a	n/a
Grade 6	28.1	26.9	25.3	n/a	n/a
Grade 7	27.2	30.7	29.9	n/a	n/a
Grade 8	32.3	30.5	32.6	n/a	n/a
High School %	36.4	34.3	34.8	n/a	n/a
High School Score	504.4	501.3	497.0	n/a	n/a

Dynamic Learning Maps Alternate Assessment

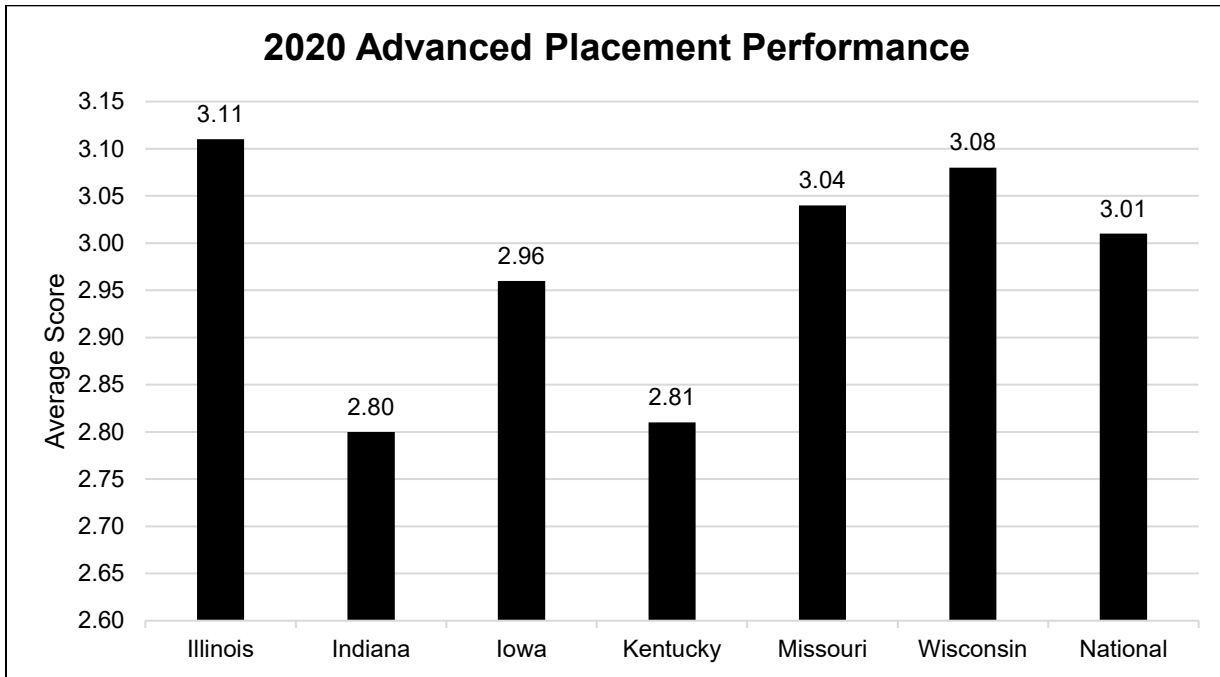
The Dynamic Learning Maps Alternate Assessment (DLM-AA) measures student performance on alternate content standards for students with the most significant cognitive disabilities – DLM Essential Elements. Essential Elements detail what children should know and be able to do at a particular grade level.

The DLM-AA replaced the Illinois Alternate Assessment (IAA) in 2016. Statewide results provide a new baseline for measuring student progress and therefore cannot be compared to IAA scores.

Final district- and school-level results indicate student performance at each of the five performance levels in English language arts and mathematics by grade level in elementary and high school. The table below displays the statewide average percentage of students who meet or exceed standards.

NOTE: Assessment data was collected in school year 2020-21 during a Spring testing window and a Fall testing window. This flexibility was per guidance provided from the US Department of Education letter dated February 22, 2021. DLM-AA data was not available at the time of this report due to the flexibility for districts to test in the Spring or Fall.

<u>English Language Arts</u>	<u>2017</u>	<u>2018</u>	<u>2019</u>	<u>2020</u>	<u>2021</u>
Grade 3	13.2	13.7	13.7	n/a	n/a
Grade 4	18.6	15.9	13.6	n/a	n/a
Grade 5	21.0	22.2	15.4	n/a	n/a
Grade 6	17.7	16.6	14.1	n/a	n/a
Grade 7	25.3	25.7	21.0	n/a	n/a
Grade 8	26.4	23.3	22.2	n/a	n/a
Grade 11	26.9	28.2	23.9	n/a	n/a
<u>Mathematics</u>	<u>2017</u>	<u>2018</u>	<u>2019</u>	<u>2020</u>	<u>2021</u>
Grade 3	12.6	14.0	14.2	n/a	n/a
Grade 4	19.8	17.8	19.4	n/a	n/a
Grade 5	8.7	10.6	8.2	n/a	n/a
Grade 6	10.0	9.4	9.3	n/a	n/a
Grade 7	5.2	5.8	4.6	n/a	n/a
Grade 8	7.2	7.2	4.2	n/a	n/a
Grade 11	5.1	5.3	3.8	n/a	n/a



Source: 2020 College Board AP Summary Reports.

Note: College Board 2021 AP Data State Summaries are not available..

DSA Source:

- College Board- SY2021 AP Data: <https://research.collegeboard.org/programs/ap/data/participation/ap-2021>
 - National and State Summary Reports for 2021- Data Unavailable (11/8/21)
- College Board- SY2020 AP Data: <https://research.collegeboard.org/programs/ap/data/archived/ap-2020>
 - National and State Summary Reports for 2020
- College Board- SY2019 AP Data: <https://research.collegeboard.org/programs/ap/data/archived/ap-2019>
 - National and State Summary Reports for 2019.

National Assessment of Educational Progress “The Nation’s Report Card” Average Student Scores for Illinois and U.S. Public Schools

	<u>2013</u>	<u>2015</u>	<u>2017</u>	<u>2019</u>	<u>2021</u>
<u>Reading</u>					
Illinois Grade 4	219	222	220	218	n/a ^a
U.S. Grade 4	221	221	221	219	n/a ^a
Illinois Grade 8	267	267	267	265	n/a ^a
U.S. Grade 8	266	264	265	262	n/a ^a
Illinois Grade 12	289	n/a ^a	n/a ^a	n/a ^a	n/a ^a
U.S. Grade 12	287	n/a ^a	n/a ^a	n/a ^a	n/a ^a
<u>Mathematics</u>					
Illinois Grade 4	239	237	238	237	n/a ^a
U.S. Grade 4	241	240	240	240	n/a ^a
Illinois Grade 8	285	282	282	283	n/a ^a
U.S. Grade 8	284	281	282	281	n/a ^a
Illinois Grade 12	154	n/a ^a	n/a ^a	n/a ^a	n/a ^a

U.S. Grade 12	152	n/a ^a	n/a ^a	n/a ^a	n/a ^a
<u>Science</u>					
Illinois Grade 4	n/a ^a	151	n/a ^a	n/a ^a	n/a ^a
U.S. Grade 4	n/a ^a	153	n/a ^a	n/a ^a	n/a ^a
Illinois Grade 8	n/a ^a	150	n/a ^a	n/a ^a	n/a ^a
U.S. Grade 8	n/a ^a	153	n/a ^a	n/a ^a	n/a ^a

Source: National Center for Education Statistics, Institute of Educational Sciences.

Note: Data is published every other year.

National Center for Education Statistics (NCES) data is not available.

DSA Source:

- National Center for Education Statistics (NCES) NAEP Results:
<https://nces.ed.gov/nationsreportcard/state/>
 - SY2021 data is currently unavailable on NCES' website.

National Assessment of Educational Progress “The Nation’s Report Card” Comparison of Illinois and U.S. Achievement Gaps

<u>Grade 4</u>	2019 Reading		2019 Math		2015 Science	
	<u>Illinois</u>	<u>U.S.</u>	<u>Illinois</u>	<u>U.S.</u>	<u>Illinois</u>	<u>U.S.</u>
White	228	229	246	249	166	165
Black	200	203	217	224	125	132
Hispanic	208	208	231	231	137	138
Asian	238	239	259	263	173	168
American Indian/Alaska Native	*	204	*	228	*	141
Native Hawaiian/Other Pacific Islander	*	209	*	230	*	142
Two or More Races	229	225	238	243	152	158

<u>Grade 8</u>	2019 Reading		2019 Math		2015 Science	
	<u>Illinois</u>	<u>U.S.</u>	<u>Illinois</u>	<u>U.S.</u>	<u>Illinois</u>	<u>U.S.</u>
White	274	271	291	291	162	165
Black	246	244	262	259	126	131
Hispanic	255	251	273	268	139	139
Asian	290	284	320	313	163	165
American Indian/Alaska Native	*	249	*	263	*	140
Native Hawaiian/Other Pacific Islander	*	252	*	263	*	137
Two or More Races	263	266	286	285	*	158

* Reporting standards not met as the sample n-size was insufficient to permit a reliable estimate.

Note: Data is published every other year.

Source: National Center for Education Statistics, Institute of Educational Sciences.

Note: School year 2020-2021 National Center for Education Statistics (NCES) data is not available.

DSA Source:

- National Center for Education Statistics (NCES) NAEP Results:
<https://nces.ed.gov/nationsreportcard/state/>
 - SY2021 data is currently unavailable on NCES' website

EDUCATORS

Number of Selected Public School Personnel by Gender Full-Time Equivalents 2020-21 (105 ILCS 5/2-3.11)

Staff Category	Male	Female	Total
Prekindergarten Teachers	23.48	1,582.912	1,606.4
Kindergarten Teachers	163.428	3,858.343	4,021.8
Elementary Teachers (1-8)	11,884.358	58,207.113	70,091.5
Secondary Teachers (9-12)	14,738.32	18,054.468	32,792.8
Special Education Teachers	3,729.64	19,841.95	23,571.6
Undefined Grade-Level Teachers	78.63	191.89	270.5
District Superintendents	581.62	208.95	790.6
Assistant District Superintendent	214.84	249.06	463.9
Principals	1,626.42	2,027.87	3,654.3
Assistant Principals	1,114.3	1,671.152	2,785.5
Other Administrators	1,598.717	2,766.5	4,365.2
Ancillary School Staff	5,653.296	45,501.048	51,154.3
Total Public School Personnel	41,407.0	154,161.3	195,568.3

Nonpublic School Personnel Full-Time Equivalents (FTE) 2020-21 (105 ILCS 5/2-3.11)

Staff Category	FTE
Prekindergarten Teachers	1,673.0
Kindergarten Teachers	1,171.1
Elementary Teachers (1-8)	8,267.5
Secondary Teachers (9-12)	3,953.9
Special Education Teachers	391.0
Administrative Staff (includes Principals and Assistant Principals)	2,671.8
Pupil Personnel Services Staff	778.2
Support Staff	4,634.8
Supervisory Staff	956.3
Total Nonpublic Personnel (FTE)	24,497.6

Source: 2019-20 Nonpublic Registration, Enrollment, and Staff Report.

Salaries for Select Full-Time Equivalent Public School Personnel
2020-21
(105 ILCS 5/2-3.11)

Staff Category	Median	Mean
Prekindergarten Teachers	\$52,630.50	\$56,355.20
Kindergarten Teachers	\$57,949.00	\$62,586.68.
Elementary Teachers (1-8)	\$64,972.26	\$68,572.92
Secondary Teachers (9-12)	\$71,775.92	\$77,679.32
Special Education Teachers	\$64,690.00	\$68,998.89
District Superintendents	\$154,000.00	\$164,810.93
Assistant District Superintendent	\$157,125.07	\$158,127.67
Principals	\$112,322.59	\$116,397.93
Assistant Principals	\$95,541.53	\$99,999.83
Other Administrators	\$101,277.04	\$106,118.04
Ancillary School Staff	\$31,348.93	\$42,822,10

Sources: Employment Information System, Illinois Report Card.

Public School Pupil-to-Teacher Ratios

School Year	Elementary	Secondary
2020-21	16.9	18.4
2019-20	18.1	18.6
2018-19	18.4	19.0
2017-18	20.1	20.0
2016-17	18.7	19.4
2015-16	18.7	18.9
2014-15	18.5	18.4
2013-14	18.6	18.1
2012-13	18.7	17.9
2011-12	18.9	18.8
2010-11	18.8	18.9
2009-10	18.2	18.2

Source: Illinois Report Card.

Educator Licenses Issued by Evaluation and Entitlement
(105 ILCS 5/2-3.11)

Licenses	2016-17	2017-18	2018-19	2019-20	2020-21
Evaluation	20,501	22,563	30,281	22,273	21,417
Entitlement	5,392	4,876	5,111	5,620	6543
Total	26,845	27,439	35,395	27,893	27,960

Source: Educator Licensure Information System.

Educator Licenses Issued by Type

Licenses	2016-17	2017-18	2018-19	2019-20	2020-21
Professional Educator License	7,116	6,807	11,980	8,676	10,007
Educator License with Stipulations (ELS) - Provisional Educator	1,548	1,884	4	0	2
Substitute Teacher License	9,972	10,916	11,675	9,567	8,821
Short-Term Substitute Teacher License		0	2,210	1,892	2,502
ELS-Paraprofessional		7,037	8,393	6,743	5,580
ELS-Transitional Bilingual	355	352	490	335	352
ELS- Career and Technical Educator		264	375	337	327
ELS- Visiting International Educator		49	37	82	15
ELS- Provisional In-State Educator		7	18	21	0
ELS-APE		119	210	234	350
ELS-CSBO		<u>4</u>	<u>0</u>	<u>3</u>	<u>4</u>
Total	18,636	27,439	35,392	27,890	27,960

Source: Educator Licensure Information System.

Educator Endorsements Issued by Type
(105 ILCS 5/2-3.11)

Endorsements	2016-17	2017-18	2018-19	2019-20	2020-21
Elementary	3,347	2,964	4,075	2,762	3,083
Secondary	3,564	2,914	3,810	2,826	3,057
Middle Grade/Middle School		4,060	3,797	2,188	2,138
Early Childhood	599	721	1,102	1,011	1,568
K-12	2,686	816	809	600	359
School Support Personnel	1,190	1,171	1,637	1,411	1,692
Administrative	1,126	1,324	1,859	1,519	1,862
Special Education- other than LBSI		53	88	57	73
LBSI		2,280	2,927	2,271	2,969
ESL		3,077	3,490	2,662	2,973
Bilingual		1,014	1,198	918	955
Short-Term Emergency Approvals in Special Education		68	134	170	162
Short-Term Approvals*	-	<u>198</u>	<u>383</u>	<u>926</u>	<u>1,491</u>
Total	12,512	20,678	25,309	19,321	24,846

Note: *Short-Term Approvals are issued in all teaching content areas except special education and driver education.
Source: Educator Licensure Information System.

Educator Licensure Tests Administered by Test Fields
(105 ILCS 5/2-3.11)

Test Field	2016-17	2017-18	2018-19	2019-20	2020-21
Basic Skills: TAP	1,016	4,650	586	69	0
edTPA		4,368	5,271	4,582	384
Early Childhood	459	708	763	994	198
Elementary	2,180	8,869	2,738	2,728	3,420
Special Education - all categories	2,012	3,496	3,079	2,530	4,638
Sciences - all disciplines	375	695	550	479	511
Math & Computer Science	305	621	627	558	811
Foreign Languages - all languages	270	344	256	169	262
English, Speech, Media, Reading, EL	1,642	1,577	1,302	1,117	1,607
History & Social Science	529	890	872	762	1093
Art, Music, Theatre, Dance	450	508	427	388	518
Vocational/Technical - all fields	124	416	344	279	300
Health & Physical Education	367	415	479	452	678
School Support Personnel - all fields	1,198	1,332	1,246	1,160	1,612
Administrative - all types	1,323	2,873	2,041	2,043	2,813
Language Proficiency	627	910	958	556	958
Assessment of Professional Teaching	337	929	99	57	62
Other	<u>32</u>	<u>22,722</u>	<u>24,153</u>	<u>9</u>	<u>9,863</u>
Total	13,535	56,324	45,791	28,915	31,512

Source: Educator Licensure Information System.
Basic Skills: TAP test removed as a requirement for the Professional Educator license as of August 2019.

Spring 2020 Illinois Public Health Emergency test waiver for edTPA.

National Board-Certified Teachers Certification Earned in Illinois

Year	Newly Certified	% Change from Prior Year	Cumulative Growth
2020-21	164	8.4	6,866
2019-20	179	0	6,741
2018-19	180	-46.9	6,578
2017-18	337	2,963.6	6,399
2016-17	11	-74.4	6,062
2015-16	43	-79	6,051
2014-15	205	-21.5	6,034
2013-14	261	-40.1	6,025
2012-13	436	-5.4	6,100
2011-12	461	-40.2	5,842
2010-11	771	5.3	5,155
2009-10	732	4.1	4,694
2008-09	704	37.8	3,924
2007-08	511	18.6	3,192
2006-07	431	36.8	2,492
2005-06	315	-23.7	1,986
1993-2005	1,653	n/a	1,811

Source: Educator Licensure Information System.

Expenditures to National Board-Certified Teachers

Year	Mentoring	Registrations	<u>Annual Stipends</u>	Total
2020-21	\$0	\$1,500,000	\$0	\$1,500,000
2019-20	0	\$1,500,000	0	1,500,000
2018-19	0	\$1,000,000	0	1,000,000
2017-18	0	1,000,000	0	1,000,000
2016-17	0	1,000,000	0	1,000,000
2015-16	0	1,000,000	0	1,000,000
2014-15	0	1,000,000	0	1,000,000
2013-14	0	1,000,000	0	1,000,000
2012-13	0	1,000,000	0	1,000,000
2011-12	0	1,000,000	0	1,000,000
2010-11	0	0	2,756,400	2,756,400
2009-10	0	0	5,740,730	5,740,730
2008-09	2,616,000	667,000	8,202,000	11,485,000
2007-08	1,273,500	2,866,960	6,294,000	10,434,460
2006-07	783,000	2,183,500	5,164,109	8,130,609
2005-06	730,000	0	3,874,995	4,604,995
1993-2005	1,296,365	3,063,735	7,860,000	13,220,090

Source: National Board for Professional Teaching Standards.

SPECIAL EDUCATION SERVICES

Students with Disabilities Receiving Special Education Services Ages 3-21 Unduplicated Count (105 ILCS 5/2-3.11)

Disability Category	2016-17	2017-18	2018-19	2019-20	2020-21
Autism	24,503	25,754	27,131	28,473	28,761
Deaf-Blind	24	28	28	30	33
Deafness	544	545	561	550	502
Developmental Delay	36,649	37,586	38,814	39,820	38,489
Emotional Disability	18,692	18,440	18,294	18,434	17,804
Hearing Impairment	2,994	2,876	2,796	2,683	2,486
Intellectual Disability	16,341	15,715	15,252	14,987	14,010
Multiple Disabilities	2,829	2,856	2,916	2,992	2,894
Other Health Impairment	35,685	37,135	38,409	39,725	857
Orthopedic Impairment	1,225	1,124	1,025	949	39,456
Specific Learning Disability	102,335	101,388	100,659	100,458	97,042
Speech/Language	50,579	49,917	50,384	49,610	47,511
Traumatic Brain Injury	682	661	633	610	545
Visual Impairment	<u>1,086</u>	<u>1,041</u>	<u>1,058</u>	<u>1,035</u>	<u>981</u>
Total	294,168	295,066	297,960	300,356	291,371

Source: I-Star and Student Information System.

Students with Disabilities by Gender Ages 3-21 Unduplicated Count (105 ILCS 5/2-3.11)

Gender	2016-17	2017-18	2018-19	2019-20	2020-21
Male	196,017	196,273	197,827	198,889	192,185
Female	<u>98,151</u>	<u>98,793</u>	<u>100,133</u>	<u>101,467</u>	<u>99,186</u>
Total	294,168	295,066	297,960	300,356	291,371

Source: I-Star and Student Information System.

Students with Disabilities by Race/Ethnic Group Ages 3-21 Unduplicated Count
(105 ILCS 5/2-3.11)

Race/Ethnicity Groups	2016-17	2017-18	2018-19	2019-20	2020-21
American Indian or Alaska Native	1,109	849	823	792	765
Asian	7,162	7,545	7,798	8,113	8,141
Black or African American	59,365	58,508	58,108	58,713	56,609
Hispanic or Latino	73,668	75,748	78,284	79,823	79,504
Native Hawaiian or Other Pacific Islander	258	256	258	264	258
Two or More Races	10,676	11,148	12,067	11,949	12,214
White	<u>141,930</u>	<u>141,012</u>	<u>140,622</u>	<u>140,702</u>	<u>133,880</u>
Total	294,168	295,066	297,960	300,356	291,371

Source: I-Star and Student Information System.

Students with Disabilities by Age Unduplicated Count
(105 ILCS 5/2-3.11)

Age	2016-17	2017-18	2018-19	2019-20	2020-21
3	8,929	9,043	9,381	9,439	7,048
4	13,113	12,591	13,245	12,903	12,120
5	15,225	15,503	15,420	15,604	14,792
6	16,664	16,811	17,457	17,231	16,798
7	18,689	18,479	18,822	19,330	18,083
8	20,233	20,263	20,295	20,689	20,100
9	21,565	21,413	21,389	21,530	20,662
10	21,544	21,947	21,858	21,910	20,984
11	21,251	21,687	22,178	22,034	21,445
12	21,335	21,265	21,631	22,151	21,347
13	20,825	21,428	21,367	21,597	21,692
14	20,324	20,605	21,212	21,091	20,934
15	20,383	20,066	20,387	21,060	20,541
16	20,060	19,869	19,608	19,973	20,533
17	18,443	18,667	18,499	18,454	18,996
18	9,415	9,333	9,119	9,042	8,868
19	2,945	3,027	2,945	2,935	2,960
20	1,824	1,733	1,826	1,939	1,959
21	1,401	1,336	1,321	1,444	1,509
Total	<u>294,168</u>	<u>295,066</u>	<u>297,960</u>	<u>300,356</u>	<u>291,371</u>

Source: I-Star and Student Information System.

Students with Disabilities Exiting School Ages 14-21 Unduplicated Count
(105 ILCS 5/2-3.11)

Reason for Exiting School	2016-17	2017-18	2018-19	2019-20	2020-21
Certificate of Completion	814	306	386	294	132
Died	84	55	62	62	36
Dropped Out of School	2,650	2,775	2,570	1,610	881
High School Diploma	11,364	15,916	15,458	15,784	7,710
Moved, Continuing School	7,358	7,540	6,082	4,467	2,158
Reached Maximum Age	567	354	306	365	163
Returned to Regular Education	<u>3,012</u>	<u>1,606</u>	<u>1,734</u>	<u>1,747</u>	<u>627</u>
Total	25,849	28,552	26,598	24,848	11,707

Source: I-Star and Student Information System.

Students with Disabilities by Primary Language Ages 3-21 Unduplicated Count
(105 ILCS 5/2-3.11)

Primary Language	2016-17	2017-18	2018-19	2019-20	2020-21
American Sign Language	110	97	99	105	92
Arabic	2,005	2,164	2,301	2,407	2,506
Assyrian	294	272	295	304	309
Cambodian	64	66	68	70	67
Cantonese (Chinese)	260	224	238	224	233
Croatian	21	28	34	35	35
English	228,274	201,585	201,257	203,198	197,803
French	221	231	256	279	297
German	69	68	77	81	74
Greek	241	216	224	231	229
Gujarati	368	395	420	430	438
Hindi	242	306	341	372	404
Hindustani	0	0	0	0	0
Italian	164	147	148	143	129
Japanese	81	70	90	88	86
Kashmiri	0	0	0	0	0
Korean	250	255	265	273	265
Lao	80	78	77	84	81
Lithuanian	123	130	136	140	132
Mandarin (Chinese)	307	350	382	395	384
Others	3,178	35,197	32,362	31,377	31,930
Filipino	798	768	808	813	803
Polish	1,969	1,940	2,002	1,993	1,882
Romanian	188	199	218	226	225
Russian	409	433	462	469	474
Spanish	53,098	48,469	50,526	51,414	50,962
Urdu	988	1,031	1,086	1,140	1,177
Vietnamese	<u>366</u>	<u>347</u>	<u>340</u>	<u>363</u>	<u>363</u>
Total	294,168	295,066	294,512	296,654	291,371

Source: I-Star and Student Information System.

**Students with Disabilities Receiving Related and Other Special Education Services
Ages 3-21 Duplicated Count
(105 ILCS 5/2-3.11)**

Related and Other Services	2016-17	2017-18	2018-19	2019-20	2020-21
Acquisition of Daily Living Skills	842	740	635	601	575
Adapted Driver Education	25	30	5	8	4
Adapted Physical Education	6,511	6,338	6,248	6,129	5,608
Aide - Class	43,556	38,325	37,967	37,451	35,691
Aide - Individual Student	17,431	8,918	9,108	9,096	8,822
Art Therapy	168	170	153	125	107
Assistive Device	15,255	2,644	11,639	12,683	13,732
Audiology	3,271	2,650	2,644	2,549	2,370
Behavioral Intervention Plan	171,488	16,134	18,215	19,185	18,928
Brailist/Reader	81	80	76	75	56
Career and Technical Education	1,234	1,019	879	712	452
Competitive Employment	130	82	59	38	25
Consultant Services	1,910	1,993	2,128	1,997	1,823
Counseling Services	13,944	13,890	14,517	15,489	14,574
Interagency Linkages	683	650	618	567	540
Interpreter Services	824	634	731	662	495
Music Therapy	391	328	273	248	211
Occupational Therapy	52,235	46,892	54,988	57,573	58,222
Orientation and Mobility	764	698	773	769	740
Other Related Services	3,337	2,915	3,089	3,216	3,335
Outdoor Education	44	48	53	134	29
Parent Counseling	254	195	189	145	111
Physical Therapy	13,324	12,345	13,408	13,474	13,254
Psychiatric Services	389	329	298	218	173
Psychological Services	2,930	1,639	1,590	1,544	1,466
Recreation	82	107	105	109	82
School Health Services	16,206	8,774	14,003	14,297	13,779
Social Work Services	84,870	67,812	87,767	91,137	91,905
Speech/Language Services	92,437	83,751	98,311	101,301	100,026
Students reported with no related services	103,781	144,340	103,788	102,747	97,893
Supported Employment	374	406	489	460	408
Supports for Transition to Post-Sec Ed	1,709	1,637	1,651	1,620	1,553
Transition/STEP by Div of Rehab Services	22,366	3,805	22,503	21,609	21,987
Transportation (Special)	63,209	53,361	54,182	55,888	53,162
Travel Training	122	113	78	67	58

Note: This chart states the number of related and other services reported for eligible students by school districts. One student could be reported as receiving up to eight services.

Source: I-Star and Student Information System.

**Educational Placement of Children with Disabilities Ages 3-5 Unduplicated Count
(105 ILCS 5/2-3.11)**

Educational Environment	2016-17	2017-18	2018-19	2019-20	2020-21*
Early Childhood Program: At least 80% of time	9	n/a	n/a	n/a	n/a
Early Childhood Program: 40% - 79% of time	1	n/a	n/a	n/a	n/a
Early Childhood Program: less than 40% of time	3	n/a	n/a	n/a	n/a
Regular Early Childhood Program: At least 10 hours per week and receiving the majority of Spec Ed and related services in the regular Early Childhood Program	13,999	14,299	16,375	16,607	10,659
Regular Early Childhood Program: At least 10 hours per week and receiving the majority of hours of Spec Ed and related services in some other location	8,439	8,728	8,335	8,390	3,371
Regular Early Childhood Program: Less than 10 hours per week and receiving the majority of hours of Spec Ed and related services in the regular Early Childhood Program	901	837	678	628	351
Regular Early Childhood Program: Less than 10 hours per week and receiving the majority of hours of Spec Ed and related services in some other location	1,281	1,318	1,166	1,051	552
Separate Class	9,325	8,221	7,859	7,774	5,331
Separate School	632	1,034	1,073	955	684
Residential Facility	14	7	6	7	2
Home	102	110	92	89	74
Service Provider Location	2,561	2,583	2,462	2,445	1,880
Total Ages 3-5	37,267	37,137	38,046	37,946	22,904

Note: Starting with SY2020-21, early childhood placements for ages 3-5 include student in grade PreK only.
Source: I-Star and Student Information System.

**Educational Placement of Children with Disabilities Ages 6-21 Unduplicated Count
(105 ILCS 5/2-3.11)**

Educational Environment	2016-17	2017-18	2018-19	2019-20	2020-21*
Inside Regular Class 80% or more of day	134,901	135,483	137,214	138,298	143,194
Inside Regular Class 40-79% of day	67,932	68,147	68,132	68,974	69,017
Inside Regular Class less than 40% of day	34,530	34,103	33,927	33,916	35,154
Separate School	14,738	15,449	15,992	16,622	16,257
Residential Facility	888	488	505	497	306
Homebound/Hospital	384	396	387	406	299
Correctional Facilities/ Detention Programs	84	17	8	8	11
Parentally Placed in Private Schools	3,442	3,846	3,749	3,689	4,229
Total Ages 6-21	256,899	257,929	259,914	262,410	268,467

Note: Starting with SY2020-21, placements for this category include student ages 5-21 from grade K through 12.
Source: I-Star and Student Information System.

**Teachers Employed to Provide Special Education Services Full-Time Equivalents
(105 ILCS 5/2-3.11)**

	2016-17	2017-18	2018-19	2019-20	2020-21
Teachers for Ages 3-5 (Highly Qualified)	1,342.8	1,646.5	1,581.1	1,792.8	1,893.55
Teachers for Ages 3-5 (Not Highly Qualified)	6.6	1.0	0	0	0
Teachers for Ages 6-21 (Highly Qualified)	18,059.0	21,948.2	21,842.2	22,843.5	23,864.7
Teachers for Ages 6-21 (Not Highly Qualified)	<u>210.9</u>	<u>44.7</u>	<u>15.0</u>	<u>17</u>	<u>14.1</u>
Total Special Education Teachers	19,619.2	23,640.4	23,438.3	24,653.3	25,772.35

Source: I-Star and Student Information System.

**Paraprofessionals Employed to Provide Special Education Services Full-Time
Equivalents
(105 ILCS 5/2-3.11)**

	2016-17	2017-18	2018-19	2019-20	2020-21
Paraprofessionals for Ages 3-5 (Highly Qualified)	4,720.8	3,580.3	3,492.7	3,535.3	3,409.79
Paraprofessionals for Ages 3-5 (Not Highly Qualified)	519.7	1.0	0	0.3	2
Paraprofessionals for Ages 6-21 (Highly Qualified)	23,728.3	28,493.4	28,346.4	29,727.1	29,660.5
Paraprofessionals for Ages 6-21 (Not Highly Qualified)	<u>3,730.8</u>	<u>48.9</u>	<u>4.9</u>	<u>18.9</u>	<u>12</u>
Total Special Education Paraprofessionals	32,699.6	32,123.6	31,844	31,844	33,084.29

Source: I-Star and Student Information System.

**Special Education and Related Services Personnel Full-Time Equivalents
(105 ILCS 5/2-3.11)**

	2016-17	2017-18	2018-19	2019-20	2020-21
Audiologists	31.6	39.2	39.3	40.6	43.03
Counselors & Rehabilitation Counselors	374.8	467.8	547.9	641	751.1
Interpreters	202.7	227.9	215.4	246.5	246.8
Medical/Nursing Service Staff	413.4	620.0	497	555.8	551.84
Occupational Therapists	894.2	1,000.2	1,001.4	1,009.4	1,023.24
Orientation & Mobility Specialists	19.1	18.6	20.1	24.2	22.9
Physical Education Teachers/ Therapeutic Recreation Specialists	206.3	206.2	192.5	213.2	213
Physical Therapists	308.3	321.0	314.3	319.3	324.59
Psychologists	1,900.6	2,066.2	2,008.1	2,050.3	2,087.25
Social Workers	2,911.3	3,261.6	3,313.2	3,496.8	3,767.35
Speech-Language Pathologists	<u>3,635.8</u>	<u>3,943.7</u>	<u>3,929.1</u>	<u>4,068.5</u>	<u>4,209.09</u>
Total Related Services Personnel	10,898.1	12,172.6	12,078.3	12,665.6	12,665.6

Source: I-Star and Student Information System.

**2020-21 Counts of Due Process Cases
(105 ILCS 5/14-8.02d)**

Due Process Complaints	Total
Total Number of due process complaints filed	161
Resolution Meetings	12
Written settlement agreements reached through resolution meetings	3
Hearings fully adjudicated	6
Decisions within timeline (include expedited)	0
Decisions within extended timeline	6
Due process complaints pending	49
Due process complaints withdrawn or dismissed (including resolved without a hearing)	106

Expedited Due Process Complaints (Related to Disciplinary Decision)	Total
Total Number of expedited due process complaints filed	0
Expedited resolution meetings	0
Expedited written settlement agreements	0
Expedited hearings fully adjudicated	0
Change of placement ordered	0
Expedited due process complaints pending	0
Expedited due process complaints withdrawn or dismissed	0

Disability	2020-2021 Count
Other Health Impairment	54
Autism	53
Specific Learning Disabilities	38
Unknown/None	14
Emotional Disability	21
Developmental Delay	6
Intellectual Disability	9
Speech/Language Impairment	7
Multiple Disabilities	5
Hearing Impairment	3
Orthopedic Impairment	2
Visual Impairment	4
Traumatic Brain Injury	3
Deaf-Blindness	1

Issue	Specific Issue	Count
Education Placement	Placement Determination	96
Educational Services/IEP	FAPE	52
Educational Services/IEP	Sufficiency of Instructional Services Offered	42
Evaluation of Students for Sp. Ed. Services	Independent Educational Evaluation	20

Reimbursement	Placement of Children by Parents when FAPE is an Issue	18
Procedural Safeguards	Parent Participation (examine records, meetings, placement decisions)	12
Evaluation of Students for Sp. Ed	Reevaluations (General, Who Can Request, Timelines)	9
Educational Services/IEP	Sufficiency of Related Services Offered	8
Eligibility of Students for Sp. Ed. Services	Disagreement over Eligibility	19
Educational Services/IEP Services/Program	IEP Implementation-Sp. Ed.	18
Educational Services/IEP	Behavioral Intervention Policies and Procedures	1
Evaluation of Students for Sp. Ed. Services	Reevaluations (General, Who Can Request, Timelines)	9
Education Placement	LRE Requirements	4
Evaluation of Students for Sp. Ed. Services	Child Find	7
Educational Services/IEP	IEP Implementation- Related Services/Programs	5
Educational Services/IEP	Transportation	1
Related Services	Speech Language Pathology	1
Evaluation of Students for Sp. Ed. Services	Initial Evaluations (General, Who Can Request)	1
Educational Services/IEP	IEP Review and Revisions	1
Educational Services/IEP	Transition Services - Content of IEP	2
Evaluation of Students for Sp. Ed. Services	Referral/Evaluation Procedures (Date of Referral, District Procedures and Response, Timelines, Notice, Nondiscriminatory Testing, Report)	1

Related Services	Occupational Therapy Rehabilitation	1
Related Services	Services	1
Related Services	School Health Services & Nurse Services	1
Educational Services/IEP	IEP Implementation- Accommodations/ Modifications	1
Educational Services/IEP	Extended School Year Services	1
Educational Services/IEP	Content of IEP (Present Levels of Academic Achievement and Functional Performance, Goals, Statement of Services, Participation, Assessment, Services Dates)	3
Educational Services/IEP	Assistive Technology/Equipment	2
Educational Services/IEP	FAPE – Jurisdictional Disputes	1
Educational Services/IEP	Review and Revisions	1
Educational Services/IEP	Calculation of Educational Benefit	1
Other	Court Order	
Parentally-Placed Private School	Child Find for Parentally Placed Private School	1
Procedural Safeguards	Consent – Parental (initial evaluations, services, reevaluations)	1

Source: Special Education Monitoring System.

Mandated Categorical Grants Rate Analysis
(105 ILCS 5/2-3.104)

Program	Reimbursement Rate (amount)	School Code Reference	Last Rate Change to School Code
Illinois Free Lunch/ Breakfast	\$0.15 per meal	105 ILCS 125	PA76-875 Effective August 1969
Regular Ed - Orphanage	1.2 weighted per capita multiplied by reported ADA. Demonstrated actual costs above weighted formula are reimbursed to 100%. Separate summer claim reimbursed at actual cost.	105 ILCS 5/18-3	PA95-0793 Effective August 2009
Special Ed - Funding for Children Requiring Sp Ed	Funds distributed at 85% based on ADA and 15% on poverty as used in the most recent GSA claim for each district.	105 ILCS 5/14-7.02(b)	PA95-0705 Effective January 2008 PA 100-0465 Repealed August 2017
Special Ed - Orphanage	Actual cost for education and transportation	105 ILCS 5/14-7.03	PA79-797 Effective July 1973
Special Ed - Personnel Reimbursement	\$9,000 per certified full-time worker; \$3,500 per noncertified worker.	105 ILCS 5/14-13.01(c)	PA95-707 Effective January 2008 PA 100-0465 Repealed August 2017
Special Ed - Private Tuition	Actual tuition cost paid less 2 district per capita tuition amounts.	105 ILCS 5/14-7.02	PA80-1405 Effective August 1978
Special Ed - Summer School	Weighted ADA multiplied by GSA amount per ADA.	105 ILCS 5/18-4.3	PA79-1350 Effective August 1976 PA 100-0465 Repealed August 2017
Special Ed - Transportation	80% of allowable cost	105 ILCS 5/14-13.01(b)	Laws of 1965 Effective July 1965
Vocational Ed Transportation	80% of allowable cost	105 ILCS 5/29-5	Laws of 1961 Effective March 1965
Regular Ed Transportation	Actual costs less EAV qualifying amount for eligible students (min \$16 per student).	105 ILCS 5/29-5	Laws of 1961 Effective March 1965

Notes:

- ADA: Average Daily Attendance
- GSA: General State Aid
- EAV: Equalized Assessed Valuation

Teachers' Retirement Systems

The purpose of these funds is to pay the statutorily required state share of the actuarial liability of the Teachers' Retirement System, including the Teachers' Retirement Insurance Program, and to subsidize the Chicago Teachers' Pension Fund (Public Act 88-593).

These funds are appropriated directly to the Teachers' Retirement System and the Chicago Teachers' Pension Fund. The following represent historical appropriation amounts:

Fiscal Year	Non-Chicago System*	Chicago System	Total Appropriations
2021	\$5,283,838,145	\$266,893,000	\$5,550,731,145
2020	\$4,945,736,256	\$257,349,000	\$5,203,085,256
2019	\$4,591,440,070	\$238,869,000	\$4,830,309,070
2018	\$4,209,483,859	\$11,692,000	\$4,221,175,859
2017	\$4,096,286,351	\$12,186,000	\$4,108,472,351
2016	\$3,850,960,455	\$12,105,000	\$3,863,065,455
2015	\$3,513,861,000	\$62,145,000	\$3,576,006,000
2014	\$3,529,008,000	\$11,903,000	\$3,540,911,000
2013	\$2,790,161,000	\$10,931,000	\$2,801,092,000
2012	\$2,494,094,000	\$10,449,000	\$2,504,543,000
2011	\$255,953,000	\$42,971,400	\$298,924,400
2010	\$913,868,667	\$37,551,400	\$951,420,067

Note: *Teachers' Retirement Insurance Program (below) included in the above Non-Chicago System totals for the following fiscal years.

Teachers' Retirement Insurance Program*

2021	\$143,101,424
2020	\$132,158,560
2019	\$125,261,961
2018	\$114,167,713
2017	\$109,703,000
2016	\$108,258,261
2015	\$100,983,000
2014	\$90,430,000
2013	\$86,683,000
2012	\$87,622,000
2011	\$85,953,000
2010	\$79,007,000

Source: Appropriations for FY 2009 through FY 2020 from Illinois Office of the Comptroller. In FY 2018, the Chicago System also received \$221.3 million from ISBE's FY 2018 Evidence-Based Funding appropriation that is not reflected above.

Amounts and percentages may not sum to totals due to rounding.



Illinois State Board of Education

isbe.net