



Chicago Teachers' Pension Fund

425 S. Financial Place, Suite 1400 | Chicago, IL 60605-1000

August 31, 2023

The Honorable J. B. Pritzker
Governor, State of Illinois
555 W. Monroe St., 16th Floor
Chicago, IL 60661

Dear Governor Pritzker:

The Public School Teachers' Pension and Retirement Fund of Chicago (CTPF) Board of Trustees is pleased to submit its 14th annual report on Illinois Economic Opportunity Investments, made by this retirement system as provided by PA 096-0753, to the Governor and the General Assembly.

The Trustees of CTPF have a strong commitment to the economy of the State of Illinois. While we adhere to an informal policy of selecting Illinois-based managers, with all other factors being equal, it is important to note that our Board utilizes investment opportunities to contribute to the growth of the Illinois economy. As of June 30, 2023, CTPF employed 16 Illinois-based investment managers who managed assets with a market value of \$2.2 billion. These assets represented 18.7% of CTPF's investment portfolio.

At CTPF, we are proud to document that for more than 14 years, Illinois-managed assets have accounted for a large percentage of our total fund. CTPF has historically demonstrated its commitment to promoting economic activity in Illinois via our holdings and our use of Illinois-based external managers and broker/dealers.

CTPF continues to support Illinois economic opportunity investments. We monitor our Illinois managed assets monthly and look for opportunities to prudently increase our holdings in Illinois, while maintaining a diversified portfolio.

If you have any questions, please feel free to contact CTPF at (312) 604-1400.

Sincerely,

Carlton W. Lenoir Sr.

Carlton W. Lenoir, Sr.
Executive Director

Fernando Vinzon

Fernando Vinzon, CFA
Chief Investment Officer

cc: The Honorable Don Harmon, Senate President, Illinois General Assembly
The Honorable Kimberly A. Lightford, Senate Majority Leader, Illinois General Assembly
The Honorable John Curran, Senate Minority Leader, Illinois General Assembly
The Honorable Emanuel "Chris" Welch, Speaker of the House, Illinois General Assembly
The Honorable Robyn Gabel, House Majority Leader, Illinois General Assembly
The Honorable Tony McCombie, House Minority Leader, Illinois General Assembly

BOARD OF TRUSTEES

Jeffery Blackwell
President

Jacquelyn Price Ward
Vice President

Victor Ochoa

Tammie F. Vinson

Philip Weiss

Maria J. Rodríguez

Quentin S. Washington

Tanya Woods

Carlton W. Lenoir, Sr.
Executive Director

Mary Sharon Reilly
Financial Secretary

Lois Nelson
Recording Secretary

Jerry Travlos



Chicago Teachers'
Pension Fund

CTPF ILLINOIS ECONOMIC OPPORTUNITY REPORT

As Required by Public Act 096-0753
for the period ending June 30, 2023

2023



Trust. Integrity. Stability.

TABLE OF CONTENTS



TABLE I Illinois-based Investment Manager Firms Investing on Behalf of CTPF	1
TABLE II Illinois-based Private Equity Partnerships, Portfolio Companies, Infrastructure, and Real Estate Properties in the CTPF Portfolio	2
TABLE III Illinois-based Public Equity Market Value of Shares Held in CTPF's Portfolio	16
TABLE IV Illinois-based Fixed Income Market Value of Shares Held in CTPF's Portfolio	19
TABLE V Domestic Equity Brokerage Commissions Paid to Illinois-based Brokers/Dealers	20
TABLE VI International Equity Brokerage Commissions Paid to Illinois-based Brokers/Dealers	21
TABLE VII Fixed Income Volume Traded through Illinois-based Brokers/Dealers <i>(par value)</i>	22

TABLE I

Illinois-based Investment Manager Firms Investing on Behalf of CTPF

Table I identifies the economic opportunity investments made by CTPF with Illinois-based investment management companies. As of June 30, 2023, the total Market/Fair Value of Illinois-based investment managers was \$2,223,232,837.78 or (18.69%) of the total CTPF investment portfolio of \$11,894,975,814.33.

Investment Manager Firms	Location	Market/Fair Value As of 6/30/23 <i>(reported in millions)</i>	% of Total Fund
Adams Street	Chicago	\$ 423.59	3.56%
Ariel Capital Management	Chicago	73.51	0.62%
Attucks Asset Management	Chicago	249.60	2.10%
Ativo Capital Management ¹	Chicago	<i>see below</i>	
Channing Capital Management	Chicago	129.37	1.09%
Heitman LLC	Chicago	38.47	0.32%
Hispania Capital Partners	Chicago	0.04	0.00%
LaSalle Investment Management, Inc	Chicago	254.59	2.14%
Leading Edge Investment Advisors	Non-Illinois		
Ativo Capital Management ²	Chicago	18.23	0.15%
Channing Capital Management	Chicago	27.36	0.23%
Mesirow Financial	Chicago	67.89	0.57%
Newport Capital Partners	Chicago	35.46	0.30%
Northern Trust Corporation	Chicago	78.70	0.66%
Oak Street Real Estate Capital LLC	Chicago	22.41	0.19%
Red Arts Capital	Chicago	2.87	0.02%
Walton Street Capital	Chicago	13.20	0.11%
William Blair & Company	Chicago	787.94	6.62%
Total IL Investment Managers		\$ 2,223.23	18.69%
Total Fund		\$ 11,894.97	

Note: percentages may not add up due to rounding.

¹Ativo is a sub-advisor in the Attucks Asset Management Manager-of-Manager program. Attucks and the Sub-advisors are located in Chicago, therefore Ativo's assets are reported as part of Attucks' Total Market Value.

²Ativo and Channing are Illinois-based sub-advisors in a Manager-of-Manager program where the Manager-of-Managers are not Illinois-based, therefore, the sub-advisor's Market Values are reported separate from the Manager-of-Managers.

TABLE II

Illinois-based Private Equity Partnerships, Portfolio Companies, Infrastructure, and Real Estate Properties in the CTPF Portfolio

Table II identifies the primary locations of CTPF's Illinois economic opportunity investments in Private Equity Partnerships, Private Equity Portfolio Companies, Infrastructure, and Real Estate properties as of June 30, 2023. CTPF's investments are indirect holdings through commingled, private equity, and real estate fund investments. Therefore, CTPF does not have individual company valuations. CTPF's Private Equity, Infrastructure, and Real Estate assets are 21.92% of the CTPF's total portfolio.

Partnerships/Portfolio Companies/Investment Properties	Location
A V Holding Co	Chicago
Abe's Market, Co.	Buffalo Grove
Acorn Capmus Fund I, LLC	Lake Forest
ActiveCampaign, LLC	Chicago
Acura Pharmaceuticals, Inc.	Rockford
Adams Street 2008 Direct (Pship)	Chicago
Adams Street 2010 Direct (Pship)	Chicago
Adams Street 2011 Direct (Pship)	Chicago
Adams Street 2012 Direct (Pship)	Chicago
Adams Street 2012 DM Co-Inv Prim (Pship)	Chicago
Adams Street 2012 EM Co-Inv Prim (Pship)	Chicago
Adams Street 2012 US Co-Inv Prim (Pship)	Chicago
Adams Street 2013 Direct (Pship)	Chicago
Adams Street 2013 DM Co-Inv Prim (Pship)	Chicago
Adams Street 2013 EM Co-Inv Prim (Pship)	Chicago
Adams Street 2013 US Co-Inv Prim (Pship)	Chicago
Adams Street 2014 Direct (Pship)	Chicago
Adams Street 2014 DM Co-Inv Prim (Pship)	Chicago
Adams Street 2014 EM Co-Inv Prim (Pship)	Chicago
Adams Street 2014 US Co-Inv Prim (Pship)	Chicago
Adams Street 2015 Direct V/G Prim (Pship)	Chicago
Adams Street 2015 Non-US Co-Inv Prim (Pship)	Chicago
Adams Street 2015 US Co-Inv Prim (Pship)	Chicago
Adams Street Co-Inv II Prim (Pship)	Chicago
Adams Street Co-Inv III A Prim (Pship)	Chicago
Adams Street Co-Inv III A Prim (Pship)	Chicago
Adams Street Lake LaSalle (Pship)	Chicago
Adams Street SMB (Pship)	Chicago
Adams Street Venture Innovation (Pship)	Chicago
Addison Property	Addison
Addison St Property I	Chicago
Advisory Research, Inc.	Chicago
Aftermath Services LLC	Multiple Locations
AG Group	Chicago

Partnerships/Portfolio Companies/Investment Properties	Location
Agspring, LLC	Chicago
AH Fund III Seed, LLC	Chicago
AHEAD, LLC	Chicago
Aisle50, Inc.	Chicago
Aldera Holdings, Inc.	Chicago
Aleri, Inc.	Chicago
Aligned Data Centers	Chicago
Alkeme Health	Chicago
Alliance Bancorp	Hinsdale
Alliantgroup LP	Chicago
Allscripts Healthcare Solutions, Inc.	Libertyville
Allston Trading, LLC	Chicago
Amcore Financial, Inc.	Rockford
Amount, Inc.	Chicago
Amplify Snack Brands, Inc.	Skokie
Anagen Therapeutics, Inc.	Chicago
Antylia Scientific (Cole-Parmer)	Vernon Hills
APAC Teleservices, Inc.	Deerfield
Applied Systems, Inc.	University Park
Aprimo	Chicago
Aptedge.io, Inc.	Streamwood
Aptinyx, Inc.	Evanston
Aqua Cultured Foods	Chicago
Aquion, Inc.	Elk Grove Village
Aragon Homecare Group Inc.	Chicago
Art's Transportation	Chicago
Ascend Transportation	Chicago
ATI Holdings, Inc.	Bolingbrook
Atkore International Group, Inc.	Harvey
Atlas Arteria Group	Chicago
Aurora Custom Machining, Inc.	Montgomery
Avant Credit Corp	Chicago
Avant, Inc.	Chicago
Avantech Testing Services, LLC	Chicago
B&B Electronics Manufacturing Co	Ottawa
B2BWorks, Inc.	Chicago
Bachrach Clothing, Inc.	Decatur
Banc Fund Co	Chicago
Bar Louie Restaurants	Glenview
Barcodes, Inc.	Chicago
Baron App, Inc. (Cameo)	Chicago
Basis Global Technologies, Inc.	Chicago
BC Group Holdings, Inc	Chicago
BEI Holdings, Inc.	Quincy

Partnerships/Portfolio Companies/Investment Properties	Location
Belden Centre Property	Chicago
Beltone Electronics Corp	Chicago
Blackboard, Inc.	Chicago
Blinkfire Analytics, Inc.	Chicago
BlockTower Capital Partners LP	Chicago
Bloomingtondale Property	Bloomingtondale
BluePay Processing, Inc.	Naperville
Boats.com, Inc.	Lake Forest
Boca Burger, Inc.	Chicago
BoCo Holding Co	Chicago
Bolingbrook Distribution Center Property	Bolingbrook
Brain.fm	Chicago
Braintree, Inc.	Chicago
Briarwood Business Center Property I	Mt Prospect
Briarwood Business Center Property II	Mt Prospect
Bridge Point Cold Storage Property	Northlake
Bright Policy, Inc.	Chicago
Broadwing Corp	Chicago
Bswift LLC	Chicago
Butterfield Rd. Property	Vernon Hills
Cambia Networks, Inc.	Rosemont
Capstone (Long Grove Pharmaceuticals)	Rosemont
Capstone Development Solutions, LLC	Rosemont
Captive Resources, Inc.	Multiple Locations
CareMerge LLC	Chicago
CAT Group Holdings LLC	Chicago
Catalytic, Inc.	Chicago
CCC Information Services, Inc.	Chicago
CDW Corp	Vernon Hills
Cedar Capital, Inc.	Barrington
Center Ave. Property	Carol Stream
CenterPoint Court Property I	Gurnee
CenterPoint Court Property II	Gurnee
CenterPoint Court Property III	Gurnee
CenterPoint Land	Joliet
CenterPoint Property I	Elmwood
CenterPoint Property II	Elmwood
CenterPoint Property I	Joliet
CenterPoint Property II	Joliet
CenterPoint Property III	Joliet
CenterPoint Property IV	Joliet
CenterPoint Property V	Joliet
Central Illinois Bancorp	Champaign
CenTrio Energy, LLC	Chicago

Partnerships/Portfolio Companies/Investment Properties	Location
Certified Power Train Specialists, Inc.	Mundelein
Champaign Healthcare Investors, LLC	Champaign
Charter Next Generation	Chicago
Charter One Financial	Chicago
Chartered Marketing Services, Inc.	Arlington Heights
Cherry Tree Dental	Chicago
CHI Overhead Doors, Inc.	Arthur
Chicago Bridge & Iron Co	Chicago
Chowbus	Chicago
Circuit City, Inc.	Chicago
Cision Ltd.	Chicago
Clean Urban Energy, Inc.	Chicago
Clearwave Fiber, LLC	Multiple Locations
CLEO Communications, Inc.	Rockford
Cleversafe I, Inc.	Chicago
Clover Technologies Group, Inc.	Hoffman Estates
Club Champion, LLC	Willowbrook
CMS Mattec (Us), Inc.	Evanston
Comdisco, Inc.	Rosemont
Commercial Ave. Property	Northbrook
Commnet Wireless, LLC	Burr Ridge
ComPsych Corp	Chicago
Concerto Healthcare, Inc.	Chicago
Consolidated Communications, Inc.	Mattoon
Coveris	Chicago
Coyote Logistics Holdings, LLC	Lake Forest
Cramer Financial	Chicago
Crane Plumbing	Evanston
Creative Catalogs Corp	Burr Ridge
Crossroads Building Supply	Oakbrook Terrace
Cruise Technologies, Inc.	Deerfield
CubeSmart Storage	Multiple Locations
Culligan International Co.	Rosemont
Cushman & Wakefield PLC	Chicago
CVS Health	Waukegan
Dairy.com	Chicago
Danielson Holdings Corp	Chicago
Dantis, Inc.	Chicago
Data Center Real Estate Fund II, LP	Chicago
Datamonkey, Inc. (PatientIQ)	Chicago
Datassential	Chicago
Davisware Holdings, LLC	West Dundee
DBS Communications, Inc.	Schaumburg
Deer Park Town Center Property	Deer Park

Partnerships/Portfolio Companies/Investment Properties	Location
DeFi Alliance LLC	Chicago
deNA Company, Ltd.	Elk Grove Village
Direct Equity Partners I, L.P.	Chicago
Diversified Foodservice Supply, Inc.	Mt. Prospect
DocuSystems Group, Inc.	Skokie
Dollar General Corp	Multiple Locations
DRA/IRC Pref Equity	Multiple Locations
Duff & Phelps, Inc.	Chicago
DuPage Medical Group, Ltd.	Downers Grove
Eagle Test Systems, Inc.	Buffalo Grove
East Lake St. Property	Chicago
East Monroe St. Property	Chicago
East Randolph St. Property	Chicago
East Seymour Ave. Property	Franklin Park
Echo Global Logistics, Inc.	Chicago
Edcura, LLC	Chicago
Electro-Motive Diesel, Inc.	La Grange
Elenion Technologies, Inc.	Naperville
Empire Today, LLC	Northlake
EN Engineering, LLC	Downers Grove
Endurance Vehicle Services, LLC	Northbrook
Enfusion LLC	Chicago
Enlivant	Chicago
Ensono LLC	Downers Grove
Envoy Global	Chicago
Epal, Inc.	Glen Ellyn
Estes Ave. Property	Elk Grove Village
EthnicGrocer.com, Inc.	Evanston
Eureka Entertainment, LLC	Chicago
Evanston Capital Management, LLC	Evanston
EverDriven	Schaumburg
Everywhere Wireless, LLC	Chicago
Fairview Drive Property	Dekalb
Family Dollar Stores, Inc.	Multiple Locations
Favorite Brands International Holding Corp	Lincolnshire
FeedBurner	Chicago
Fenwal Holdings, Inc.	Round Lake
Fidelis Education, Inc.	Chicago
Fieldglass Holdings, Inc.	Chicago
Firefly Mobile, Inc.	Lincolnshire
First International Digital, Inc.	Schaumburg
First Midwest Bancorp, Inc.	Itasca
First Oak Brook Bancshares, Inc.	Oak Brook
Firstbank of Illinois Company	Springfield
Flexera Software LLC	Itasca

Partnerships/Portfolio Companies/Investment Properties	Location
Fluensee, Inc.	Chicago
Fly.io, Inc.	Chicago
Follett School Solutions, LLC	McHenry
FoodChain ID Group, Inc.	Deerfield
ForeFront Education, Inc.	Barrington
Fort Dearborn Operating Company, LLC	Elk Grove Village
Fotofabrication Corp	Chicago
FourKites, Inc.	Chicago
Foxtrot Ventures, Inc.	Chicago
Fruit of the Loom Corp	Chicago
G2 Crowd, Inc.	Chicago
G2.com, Inc.	Chicago
Gamma Technologies, Inc.	Westmont
Gary & Lake Property	Hanover Park
Gateless, Inc.	Chicago
Gemini Networks	Chicago
Geneva Commons Property	Geneva
Genovique Specialties Holdings Corp	Des Plaines
GGW Management Partners, LLC	Chicago
GlobalView Software, Inc.	Chicago
Go To Logistics, Inc.	Northlake
Gogo, Inc.	Chicago
Goji Food Solutions Ltd.	Park Ridge
Goose Island Property	Chicago
Grafly, Inc.	Chicago
Grand Premier Financial, Inc.	Wauconda
Grant Peaking Power, LLC	Manhattan
Great Lakes Dredge & Dock Corp	Oak Brook
Great Lakes Wellness	Grayslake
Groupon, Inc.	Chicago
GrubHub, Inc.	Chicago
GTCR Fund XI, L.P	Chicago
GTCR Fund XII, L.P	Chicago
Gtreasury Holdings, LLC	Lake Zurich
Guaranteed Rate, Inc.	Chicago
Hatch Loyalty, Inc.	Chicago
HCG Holdings LLC	Chicago
H-D Advanced Manufacturing	Addison
Healthcare Financial Resources Inc	Schaumburg
Hearthside Food Solutions, LLC	Downers Grove
Heartland Dental Care, Inc.	Effingham
Heartland Property I	Shorewood
Heartland Property II	Shorewood
Heartland Property III	Shorewood
Heniff Transportation Systems	Oak Brook

Partnerships/Portfolio Companies/Investment Properties	Location
Heritage Financial Services, Inc.	Tinley Park
HFN, Inc.	Oak Brook
Higher Ground Education, Inc.	Lake Forest
Hireology, Inc.	Chicago
Honor Finance Corp	Evanston
Hub International, Ltd.	Chicago
Icon Identity Solutions, Inc.	Elk Grove Village
iExplore, Inc.	Chicago
IMPAC Group, Inc.	Melrose Park
Inadco, Inc.	Chicago
Indalex Aluminum Solutions	Chicago
Infogix, Inc.	Naperville
Initiate Systems, Inc.	Chicago
Innophos	Multiple Locations
Innovation Group Investors, L.P.	Chicago
InstallShield Corp	Schaumburg
Insureon Holdings, LLC	Chicago
Interstate Blvd Property	Loves Park
Investment Metrics, Inc.	Chicago
ionQ, Inc.	Chicago
Jakel Acquisition Corp	Highland Park
Jellyvision Lab, Inc.	Chicago
Journera, Inc.	Chicago
K&K Screw Products, LLC	Carol Stream
K2 Industrial Services, Inc.	Chicago
KAR Holdings, LLC	Westchester
Kaufman Hall & Associates LLC	Skokie
Kedzie Plaza Property	Chicago
Keeley Asset Management Corp	Chicago
Kellstrom Aerospace Group, Inc.	Roselle
Kenna Security (Risk IO)	Chicago
Kerasotes Theatres, Inc.	Springfield
Kettle Partners	Chicago
Kin Insurance, Inc.	Chicago
Kinetek, Inc.	Deerfield
Kinzie Station Property	Chicago
Kuvare Insurance	Chicago
Lamont Ave. Property	Elmhurst
Lessen, Inc.	Chicago
Libre, Inc.	Chicago
Life Fitness	Rosemont
Life Storage	Multiple Locations
Lincoln Clean Energy, LLC	Chicago
Lincoln Peaking Power, LLC	Crete
Lincoln Village Property	Chicago

Partnerships/Portfolio Companies/Investment Properties	Location
Lincolnshire Equity Fund IV-A, L.P.	Chicago
Logistics Investment LLC	Westmont
Looking Glass Networks, LLC	Oak Brook
LRS	Chicago
Madison Dearborn Capital Partners VI, L.P.	Chicago
Maestro Healthcare Technology, Inc.	Chicago
MAF Bancorp, Inc.	Clarendon Hills
Magnate Worldwide, LLC	Oakbrook Terrace
marchFIRST, Inc.	Chicago
Mariner Wealth Advisors, LLC	Oakbrook Terrace
Mattersight Corp	Lake Forest
MBXG Holdings, Inc.	Chicago
MDCClone	Chicago
Meritas, LLC	Chicago
Metro Property	Des Plaines
MFP Holding Co	Chicago
Midpoint I Property	Woodridge
Midwest Banc Holdings, Inc.	Melrose Park
Midwest Can Co	Franklin Park
Milestro, Inc.	Schaumburg
Millennium Trust Co	Oak Brook
Montgomery Ward, Inc.	Chicago
Morton Grove Pharmaceuticals, Inc.	Morton Grove
Motor Coach Industries International	Des Plaines
Motorola Solutions, Inc.	Schaumburg
Mueller Holdings (N.A.), Inc.	Decatur
MultiPlan	Naperville
Murphy Rd. Property	Woodridge
MVP.com, Inc.	Chicago
MYR Group, Inc.	Rolling Meadows
Mystery Tackle Box, Inc.	Chicago
NAPA Auto Parts Inc.	Multiple Locations
Narrative Science, Inc.	Evanston
National Equipment Services, Inc.	Evanston
Naurex, Inc.	Evanston
Neovia Logistic Services, LLC	Downers Grove
NetGov	Chicago
Network Merchants, LLC (NMI)	Schaumburg
Neutral Tandem, Inc.	Chicago
NewMonics, Inc.	Lisle
Newport Capital Partners	Chicago
Nexcore - Silver Cross	New Lexox
Nexeo Plastics, LLC	Willow Springs
NextCapital Group	Chicago
Nielsen Consumer LLC	Chicago

Partnerships/Portfolio Companies/Investment Properties	Location
Norcross Safety Products LLC	Oak Brook
Nordstrom, Inc.	Chicago
North American Central School Bus, LLC	Joliet
North American Transportation Management Institute (NATMI)	Multiple Locations
North Elston Ave. Property	Chicago
North Michigan Ave. Property	Chicago
North Oakhurst Dr. Property	Aurora
North Rt. 83 Property	Round Lake
North Schmidt Rd. Property	Romeoville
North Square Investments	Chicago
North State St. Property	Chicago
North Wacker Dr. Property	Chicago
Northfield Industries, LLC	Schaumburg
Northlight Real Estate Opportunity Fund II L.P.	Multiple Locations
NovaMed EyeCare, Inc.	Chicago
NuMat Technologies, Inc.	Evanston
NutraSweet Company	Chicago
Nuveen Investments, Inc.	Chicago
Oak Brook Property	Oak Brook
Old Second Bancorp, Inc.	Aurora
Omeda	Chicago
Omega Wireless, LLC	Chicago
OMN Holdings LLC	Chicago
Onbe, Inc.	Buffalo Grove
One, Inc.	Champaign
Open Mile, Inc.	Chicago
Open Port Technology, Inc.	Chicago
Optima	Chicago
Option Care Health, Inc.	Multiple Locations
optionsXpress Holdings, Inc.	Chicago
Optobionics Corp	Naperville
O'Reilly Auto Parts	Kankakee
OrisDX, Inc.	Multiple Locations
OurHouse, Inc.	Evanston
OutStart, Inc.	Chicago
Ovation Holdings, LLC	Lincolnshire
Oxford Clothes Inc.	Chicago
Packaging Corp of America	Lake Forest
Packtion, Inc.	Chicago
PAIRx, Inc.	Chicago
Palindrome Corp	Naperville
Palladium Energy, Inc.	Woodridge
Parlano, Inc.	Chicago
Parts Town, LLC	Addison
Patton Wings, Inc.	Multiple Locations

Partnerships/Portfolio Companies/Investment Properties	Location
Pax Holding Corp	Chicago
Paylocity Corp	Arlington Heights
PCCR USA Inc.	Carpentersville
Peerless Networks, LLC	Chicago
Pegasus Parent, L.P. (Tenneco Inc.)	Lake Forest
Performance Health Holding, Inc.	Warrenville
PharMEDium Healthcare Corp	Lake Forest
Plainfield Distribution Center Property	Plainfield
Platinum Technology, Inc.	Oakbrook Terrace
PMA Financial Network, LLC	Naperville
Portillo's Restaurant Group, Inc.	Oak Brook
Potbelly Sandwich Works, LLC	Chicago
Power Stop Holdings, LLC	Bedford Park
Powermate, Inc.	Aurora
PowerReviews, Inc.	Chicago
Pregis Corp	Deerfield
Premise Health Corp	Deerfield
Prime Advantage	Chicago
Primient	Schaumburg
Princeton National Bancorp, Inc.	Princeton
PrivateBancorp, Inc.	Chicago
Project44, Inc	Chicago
Prospect Mortgage Company, LLC	Northbrook
Protera Technologies, Inc.	Chicago
PSI Acquisitions, Inc.	Oakbrook
PTNB Holdings, LLC	Lindenhurst
Quantitative Analytics, Inc.	Chicago
Quirch	Lyons
Raise Marketplace, Inc.	Chicago
Rand McNally and Company	Skokie
Regatta Medical	Multiple Locations
Relativity Holdco, LLC.	Chicago
Remote Technology, Inc.	Chicago
Renaissance Alliance Insurance Services, LLC	Chicago
RESCOLU, Inc.	Chicago
Retail Holdings	Multiple Locations
Revenue Cycle Management Solutions (Waystar)	Chicago
RevenueWell	Bannockburn
Rhomas Group, Inc.	Northbrook
Risk Management Alternatives, Inc.	Arlington Heights
Rocket Travel, Inc.	Chicago
Rockwood Village MHC	Wood River
Romeoville Property I	Romeoville
Romeoville Property II	Romeoville
Romeoville Property III	Romeoville

Partnerships/Portfolio Companies/Investment Properties	Location
RoundTable III Platform Development Corp	Lake Forest
Route 6 Property	Channahon
RPC Holdings, LLC	De Kalb
Runtime Solutions, Inc.	Homewood
S & S Activewear, LLC	Bolingbrook
Sage Products Holdings, LLC	Cary
Santa Fe Dr. Industrial Property	Hodgkins
Sarnova, Inc.	Burr Ridge
Savant Capital, LLC	Chicago
Scotsman Industries, Inc.	Vernon Hills
SDI Presence, LLC	Chicago
Sears Holding Corp	Chicago
Seed CX	Chicago
Segall Bryant & Hamill	Chicago
Select Portfolio Servicing, Inc.	Chicago
Select Rehabilitation, Inc.	Northfield
Semotus Solutions, Inc.	Chicago
Sequoia Drive Property I	Aurora
Sequoia Drive Property II	Aurora
Sequoia Drive Property III	Aurora
Serta Simmons Holdings, LLC	Hoffman Estates
Sevan Multi-Site Solutions, Inc.	Downers Grove
ShipBob	Chicago
Shoemaker Square Property	Chicago
Simple Mills, Inc.	Chicago
Singlehop, Inc.	Chicago
Sirva, Inc.	Chicago
Sky Zone	Multiple Locations
Social Sentinel, Inc.	Chicago
Soda Health	Chicago
SolarBridge Technologies, Inc.	Champaign
Solo Cup Company	Highland Park
Sotera Health LLC	Oak Brook
Source Health, Inc.	Chicago
South 105th St. Property	Chicago
South 79th St. Property	Chicago
South 87th St. Property	Chicago
South Jefferson St. Property	Chicago
Specialty Foods Group	Rosemont
Spiegel Creditor Trust	Downers Grove
SportVision, Inc.	Evanston
Spothero, Inc.	Chicago
Springcoin, Inc.	Chicago
Sprout Social, Inc.	Chicago
SSA Global Technologies, Inc.	Chicago

Partnerships/Portfolio Companies/Investment Properties	Location
StartSampling, Inc.	Carol Stream
Steelhead Energy, LLC	Carbondale
Stericycle, Inc.	Deerfield
Stonebrook Plaza Property	Merrionette Park
StorageMart Us Self Storage	Multiple Locations
Stor-It Self Storage	Multiple Locations
Strategic Hotels & Resorts, Inc.	Chicago
Student Transportation	Chicago
Sun Trading, LLC	Chicago
Sunrise Transportation	Lisle
SunSource Holdings, Inc.	Addison
Swift Current Energy	Springfield
SymphonyIRI Group, Inc.	Chicago
Syntellis Performance Solutions, LLC	Chicago
Tagkast, Inc.	Chicago
Talent Partners, Inc.	Chicago
Telegraph System, Inc.	Chicago
Tellabs Access, LLC	Naperville
Tellabs, Inc.	Lisle
Tempus Labs, Inc.	Chicago
Tenneco, Inc.	Lake Forest
The MVMNT Group, Inc.	Chicago
The ServiceMaster Co	Downers Grove
The Shelby Group	Schaumburg
The Sherwin-Williams Co.	Oak Forest
The Warranty Group	Chicago
THL Credit, Inc.	Chicago
Thoma Bravo Credit Fund I, L.P.	Chicago
Thoma Bravo Credit Fund II Feeder, L.P.	Chicago
Thoma Bravo Discover Fund II, L.P.	Chicago
Thoma Bravo Discover Fund III, L.P.	Chicago
Thoma Bravo Explore Fund, L.P.	Chicago
Thoma Bravo Fund IX, L.P.	Chicago
Thoma Bravo Fund X, L.P.	Chicago
Thoma Bravo Fund XI, L.P.	Chicago
Thoma Bravo Fund XIII, L.P.	Chicago
Thoma Bravo Fund XIV, L.P.	Chicago
Thoma Bravo Special Opportunities Fund I, L.P.	Chicago
TierPoint Data Centers	Franklin Park
TimeDoc, Inc	Chicago
Tony's Fresh Market	Itasca
Total Attorneys, Inc.	Chicago
Transcendia, Inc.	Franklin Park
Transforce, Inc.	Chicago
TransUnion Corp	Crestwood

Partnerships/Portfolio Companies/Investment Properties	Location
TravelCLICK, Inc.	Schaumburg
Tribune Company, LLC	Chicago
Tri-State Pkwy Property I	Gurnee
Tri-State Pkwy Property II	Gurnee
Truss Holdings, Inc.	Deerfield
Trustwave, Inc.	Chicago
Tugwell Property	Franklin Park
Turnpike Interactive, Inc.	Chicago
U.S. Can Corp	Lombard
U.S. Foods, Inc.	Rosemont
UHY Advisors, Inc.	Chicago
Ulta Beauty, Inc	Romeoville
United Airlines	Elk Grove Village
United Asset Coverage, Inc.	Naperville
United Road Towing, Inc.	Mokena
Unity Envirotech of Illinois	Henry
Unity Point Health	Moline
University Park South Gereneration Facility	University Park
Utopia, Inc.	Mundelein
Vantage Specialty Chemicals, Inc.	Chicago
Veriflow Systems, Inc.	Champaign
Vigic-Ewireless, Inc.	Highland Park
Vistex, Inc.	Hoffman Estates
Visual Comfort Group	Skokie
Vivid Seats	Chicago
VMP Holdings Company I, LLC	Naperville
Vyaire Medical	Mettawa
Walgreens Co.	Multiple Locations
Watermelon Express, Inc.	Chicago
WaterScience, Inc.	Chicago
Waveland Ave Property	Franklin Park
Waystar	Chicago
West Blackhawk St. Property	Chicago
West Danda Square Property	Wheaton
West Fullerton Ave. Property	Chicago
West Jackson St. Property	Chicago
West Lake St. Property	Chicago
West Roosevelt Rd. Property I	Chicago
West Roosevelt Rd. Property II	Chicago
West Roosevelt Rd. Property III	Chicago
West Seymour Ave. Property	Franklin Park
West Washington Ave. Property	Chicago
Westco Bancorp, Inc.	Westchester
Western Smokehouse	Multiple Locations
Wickes Lumber Co.	Vernon Hills

Partnerships/Portfolio Companies/Investment Properties	Location
Williamson Royalty Ventures	Carterville
Windham Commerce Property	Romeoville
Wintrust Financial Corp	Lake Forest
WinWire Technologies	Chicago
Woodlake Property	Gurnee
Woods Equipment Co	Rockford
Woodstock Sterile Solutions	Woodstock
WU Holdco, Inc. (WUH)	Gurnee
WyzAnt, Inc.	Chicago
Yello	Chicago
YI Group Holdings, LLC	Algonquin
Young Innovations, Inc.	Algonquin
Zenith Administrators, Inc.	Chicago
Zera, Inc.	Chicago

TABLE III

Illinois-based Public Equity Market Value of Shares Held in CTPF's Portfolio

Table III identifies the market value of shares, and the percentage of the total fund held in the CTPF Public Equity portfolio as of June 30, 2023, for each public company headquartered in Illinois. CTPF's total Public Equity Positions held in Illinois investments was \$186,914,959.72 or (1.57%).

Company Name	Market Value of CTPF Share As of 06/30/23	% of Total Fund (MV)
AAR Corp	\$ 1,212,786.72	0.01%
Abbott Laboratories	13,792,120.20	0.12%
AbbVie Inc.	21,884,598.09	0.18%
ACCO Brands Corp	17,635.85	0.00%
Addus HomeCare Corp	65,075.4	0.00%
Adtalem Global Education Inc.	75,067.24	0.00%
Alight Inc.	732,722.76	0.01%
AON PLC	18,638,728.80	0.16%
AptarGroup Inc.	564,817.50	0.00%
Archer-Daniels-Midland Co	2,791,035.28	0.02%
Arthur J Gallagher & Co	3,278,838.81	0.03%
Ascent Industries Co	6,508.44	0.00%
Assertio Holdings Inc.	3,523.00	0.00%
Atkore International Group Inc.	3,340,546.68	0.03%
BankFinancial Corp	4,826.20	0.00%
Baxter International Inc.	5,830,632.12	0.05%
Brunswick Corp	463,697.28	0.00%
Camping World Holdings Inc.	36,240.40	0.00%
Cars.com Inc.	44,515.72	0.00%
CDW Corp	1,748,571.50	0.01%
CF Industries Holdings Inc.	1,036,232.34	0.01%
Chicago Rivet & Machine Co	2,108.63	0.00%
CME Group Inc.	8,329,711.95	0.07%
CNA Financial Corp	98,688.84	0.00%
Coeur Mining Inc.	22,674.56	0.00%
Conagra Brands Inc.	1,127,832.84	0.01%
Consolidated Communications Holdings Inc.	10,153.33	0.00%
CTS Corp	441,859.95	0.00%
Cushman & Wakefield Plc	28,989.92	0.00%
Deere & Co	9,363,940.90	0.08%
Discover Financial Services	2,179,018.80	0.02%
Donnelley Financial Solutions Inc.	7,421.39	0.00%
Dover Corp	1,587,237.50	0.01%
Enova International Inc.	44,089.60	0.00%

Company Name	Market Value of CTPF Share <i>As of 06/30/23</i>	% of Total Fund (MV)
Investnet Inc.	\$ 90,033.95	0.00%
Equity Commonwealth	69,917.26	0.00%
Equity LifeStyle Properties Inc.	896,192.22	0.01%
Equity Residential	1,722,806.55	0.01%
Exelon Corp	2,948,272.32	0.02%
Federal Signal Corp	1,248,969.18	0.01%
First Busey Corp	38,149.80	0.00%
First Mid-Illinois Bancshares Inc.	965.60	0.00%
FreightCar America Inc.	926.78	0.00%
Fuel Tech Inc.	873.18	0.00%
GATX Corp	151,784.46	0.00%
GE Healthcare Inc.	2,219,233.08	0.02%
GoGo Inc.	21,619.71	0.00%
Great American Bancorp Inc.	5,391.50	0.00%
Heidrick & Struggles International Inc.	28,719.95	0.00%
Heritage-Crystal Clean Inc.	6,386.51	0.00%
Horizon Group Properties Inc.	1,120.50	0.00%
Huron Consulting Group Inc.	456,900.71	0.00%
Hyatt Hotels Corp	382,468.04	0.00%
IDEX Corp	1,383,045.50	0.01%
Illinois Tool Works Inc.	7,627,628.56	0.06%
Inventrust Properties Corp	49,665.00	0.00%
John B Sanfilippo & Son Inc.	26,503.02	0.00%
John Bean Technologies Corp	1,975,127.90	0.02%
Kemper Corp	669,269.68	0.01%
Knowles Corp	49,520.52	0.00%
Lifeway Foods Inc.	2,639.65	0.00%
Littelfuse Inc.	521,444.90	0.00%
LKQ Corp	1,024,270.06	0.01%
McDonald's Corp	15,341,258.10	0.13%
Methode Electronics Inc.	47,631.92	0.00%
Molson Coors Beverage Co	857,961.04	0.01%
Mondelez International Inc.	6,728,933.82	0.06%
Morningstar Inc.	363,709.85	0.00%
Motorola Solutions Inc.	3,496,777.44	0.03%
MYR Group Inc.	75,810.32	0.00%
Nanophase Technologies Corp	1,722.24	0.00%
Northern Trust Corp	1,065,243.52	0.01%
Oil-Dri Corp of America	41,410.98	0.00%
Old Republic International Corp	525,650.28	0.00%
Old Second Bancorp Inc.	5,563.56	0.00%
OneSpan Inc.	30,511.04	0.00%

Company Name	Market Value of CTPF Share As of 06/30/23	% of Total Fund (MV)
Packaging Corp of America	819,524.16	0.01%
Paylocity Holding Corp	2,265,474.81	0.02%
PC-Tel Inc.	10,620.93	0.00%
Perdocoe Education Corp	24,859.02	0.00%
Perma-Pipe International Holdings Inc.	2,406.03	0.00%
Playtika Holding Corp	102,068.40	0.00%
Reynolds Consumer Products Inc.	120,175.50	0.00%
Richardson Electronics Ltd	5,478.00	0.00%
RLI Corp	303,372.81	0.00%
Rubicon Technology Inc.	77.60	0.00%
Ryan Specialty Holdings Inc.	293,580.60	0.00%
SigmaTron International Inc.	1,231.20	0.00%
SP Plus Corp	34,573.24	0.00%
Sprout Social Inc.	1,129,766.00	0.01%
Stepan Co	78,741.44	0.00%
Surgalign Holdings Inc.	30.01	0.00%
Telephone & Data Systems Inc.	25,554.15	0.00%
The Allstate Corp	2,002,519.60	0.02%
The Azek Co Inc.	637,453.05	0.01%
The Boeing Co	8,997,949.92	0.08%
The Kraft Heinz Co	2,078,454.00	0.02%
The Middleby Corp	595,607.07	0.01%
Titan International Inc.	427,299.76	0.00%
Tootsie Roll Industries Inc.	67,633.10	0.00%
TransUnion	857,635.17	0.01%
TreeHouse Foods Inc.	3,843,087.16	0.03%
Ulta Salon Cosmetics & Fragrance Inc.	1,706,848.07	0.01%
United Airlines Holdings Inc.	1,282,037.55	0.01%
United American Healthcare Corp	151.91	0.00%
Univar Inc.	137,876.48	0.00%
US Foods Holding Corp	724,724.00	0.01%
Ventas Inc.	1,378,440.47	0.01%
Veradigm Inc.	77,968.80	0.00%
Walgreens Boots Alliance Inc.	1,238,317.85	0.01%
Westell Technologies Inc.	1,768.00	0.00%
Wintrust Financial Corp	963,594.78	0.01%
WW Grainger Inc.	2,509,293.38	0.02%
Yunghong CTI Ltd	254.13	0.00%
Zebra Technologies Corp	1,154,032.83	0.01%
US Foods Holding Corp	724,724.00	0.01%
Total IL Holdings	\$186,914,959.72	1.57%

Note: percentages may not add up due to rounding.

TABLE IV

Illinois-based Fixed Income Market Value of Shares Held in CTPF's Portfolio

Table IV identifies the market value of shares, and the total fund percentage held in the CTPF Fixed Income portfolio as of June 30, 2023, for each public company headquartered in Illinois. CTPF's total Fixed Income market value of shares held in Illinois investments was \$33,971,590.04 or (0.29%).

Company Name	Market Value of CTPF Share As of 06/30/23	% of Total Fund (MV)
Abbott Laboratories	\$ 1,160,541.40	0.01%
AbbVie Inc.	4,238,688.05	0.04%
Advocate Health & Hospitals Co	18,637.25	0.00%
Archer-Daniels-Midland Co	33,624.50	0.00%
Baxter International Inc.	171,372.00	0.00%
BP Capital Markets America Inc.	3,453,405.25	0.03%
CDW Corp	135,070.50	0.00%
Chicago O'Hare International	228,810.00	0.00%
Chicago Transit Authority	61,254.90	0.00%
Chicago Water Reclamation	272,816.85	0.00%
City of Chicago, IL	145,478.50	0.00%
CME Group Inc.	147,559.60	0.00%
Common Spirit Health	208,720.95	0.00%
Commonwealth Edison Co	361,220.00	0.00%
Conagra Brands Inc.	542,664.10	0.00%
Deere & Co	809,823.05	0.01%
Discover Financial Services	92,808.00	0.00%
ERP Operating LP	85,058.00	0.00%
Exelon Corp	776,179.60	0.01%
GATX Corp	76,616.00	0.00%
GE Healthcare Technologies Inc.	682,336.55	0.01%
Hyatt Hotels Corp	99,717.00	0.00%
Illinois Tool Works, Inc.	43,727.00	0.00%
LKQ Corp	201,422.00	0.00%
McDonald's Corp	3,320,519.10	0.03%
Molson Coors Beverage Co	60,301.15	0.00%
Mondelez International Inc.	660,309.05	0.01%
Motorola Solutions, Inc.	68,630.70	0.00%
Northern Trust Corp	61,590.00	0.00%
Packaging Corp of America	740,659.20	0.01%
The Allstate Corp	346,980.00	0.00%
The Boeing Co	12,274,457.95	0.10%
The Kraft Heinz Co	1,217,978.53	0.01%
United Airlines Holding Inc.	890,455.31	0.01%
Walgreens Boots Alliance, Inc.	187,522.00	0.00%
WW Grainger Inc.	94,636.00	0.00%
Total IL Holdings	\$ 33,971,590.04	0.29%

Note: percentages may not add up due to rounding.

TABLE V

Domestic Equity Brokerage Commissions Paid to Illinois-based Brokers/Dealers

Tables V and VI detail the commission amounts paid by CTPF to Illinois-based Brokers/Dealers for Domestic Equity and International Equity trades for the twelve months ending June 30, 2023. Illinois-based Brokers/Dealers in the Domestic Equity asset class accounted for \$133,138.76 (40.99%) of all commissions paid; meanwhile, \$550,355.80 (22.16%) of all International Equity Brokerage Commissions were paid to Illinois-based Brokers/Dealers during fiscal year 2023.

Brokers/Dealers	Commissions for 12 months ended 6/30/23
Academy Securities, Inc.	\$ 324.04
Bancroft Capital, LLC	1,430.52
Cabrera Capital Markets, LLC	12,904.31
Castleoak Securities, LP	1,053.06
Loop Capital Markets LLC	63,335.79
Penserra Securities LLC	20,415.58
Roberts & Ryan Investments, Inc.	885.33
Telsey Advisory Group LLC	23,930.33
William Blair & Company LLC	8,859.80
Total Commissions Paid to IL Firms	\$ 133,138.76
Total Domestic Commissions Paid	\$ 324,828.36
IL Percentage	40.99 %

Note: percentages may not add up due to rounding.

TABLE VI

International Equity Brokerage Commissions Paid to Illinois-based Brokers/Dealers

Brokers/Dealers	Commissions for 12 months ended 6/30/23
Cabrera Capital Markets, LLC	\$ 76,866.80
Castleoak Securities, LP	12,090.96
Loop Capital Markets LLC	290,142.01
Mischler Financial Group, Inc.	91,308.13
North South Capital, LLC	12,862.27
Northern Trust	10,734.46
Penserra Securities LLC	55,182.44
Sturdivant & Co. Inc	338.86
Telsey Advisory Group LLC	756.04
William Blair & Company LLC	73.83
Total Commissions Paid to IL Firms	\$ 550,355.80
Total International Commissions Paid	\$ 2,483,709.46
IL Percentage	22.16%

Note: percentages may not add up due to rounding.

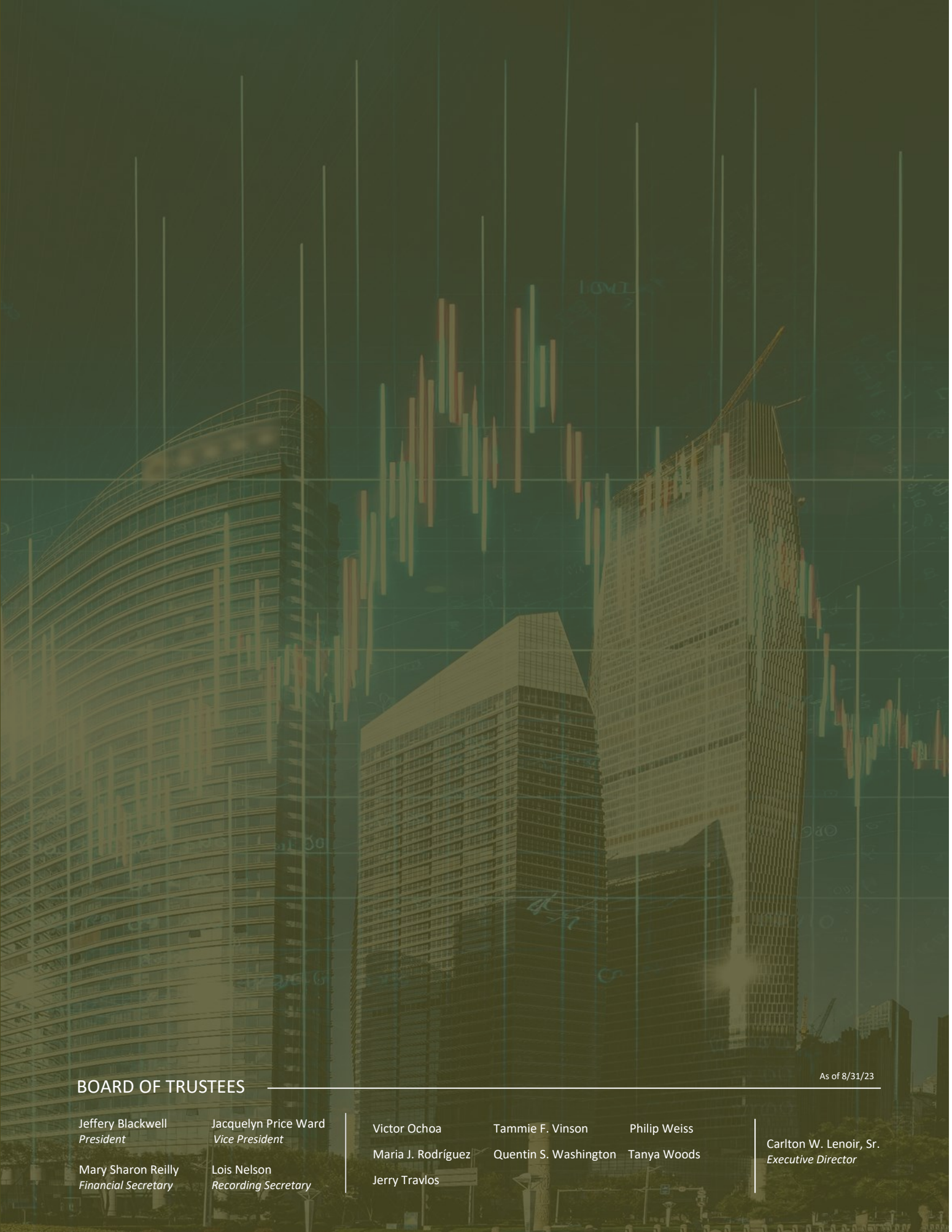
TABLE VII

Fixed Income Volume Traded through Illinois-based Brokers/Dealers (*par value*)

Table VII details the volume in par value of Fixed Income instruments traded by Illinois-based Broker/ Dealers for the twelve months ended June 30, 2023. Total par volume traded with Illinois-based Broker/Dealers was \$1,951,315,583.77 or (32.67%) of all Fixed Income Brokerage traded in par value.

Brokers/Dealers	Volume Traded in Par Value for 12 months ended 6/30/23
Academy Securities, Inc.	\$ 268,996,811.65
Cabrera Capital Markets, LLC	835,152,255.07
Castleoak Securities, LP	348,495,877.27
Citadel Securities, LLC	13,847,105.41
Great Pacific Securities	52,332,505.48
InspereX LLC	510,000.00
Loop Capital Markets LLC	176,954,464.40
Mesirow Financial, Inc.	553,000.00
Mischler Financial Group, Inc.	218,584,325.95
Multi-Bank Securities, Inc.	404,581.88
Penserra Securities LLC	22,679,511.25
Performance Trust Capital Partners, LLC	2,969,170.57
Stern Brothers & Co.	9,835,974.84
Total PAR Volume Traded with IL Firms	\$ 1,951,315,583.77
Total PAR Volume Traded	\$ 5,972,956,310.05
IL Percentage	32.67%

Note: percentages may not add up due to rounding.



BOARD OF TRUSTEES

As of 8/31/23

Jeffery Blackwell
President

Jacquelyn Price Ward
Vice President

Victor Ochoa

Tammie F. Vinson

Philip Weiss

Carlton W. Lenoir, Sr.
Executive Director

Mary Sharon Reilly
Financial Secretary

Lois Nelson
Recording Secretary

Maria J. Rodríguez

Quentin S. Washington

Tanya Woods

Jerry Travlos