



# ***ILLINOIS SENATE REDISTRICTING COMMITTEE***

**August 28, 2021**

**Subject Matter: 2020 Census and adjustments to the General Assembly Redistricting Act of 2021.**

Individuals who wish to give oral testimony may participate in the hearing at the Vermilion Room located on the 2nd Floor of the SIU at Carbondale SIU Student Center, 1255 Lincoln Drive Carbondale, Illinois or virtually via Zoom.

# Census Numbers for Madison County

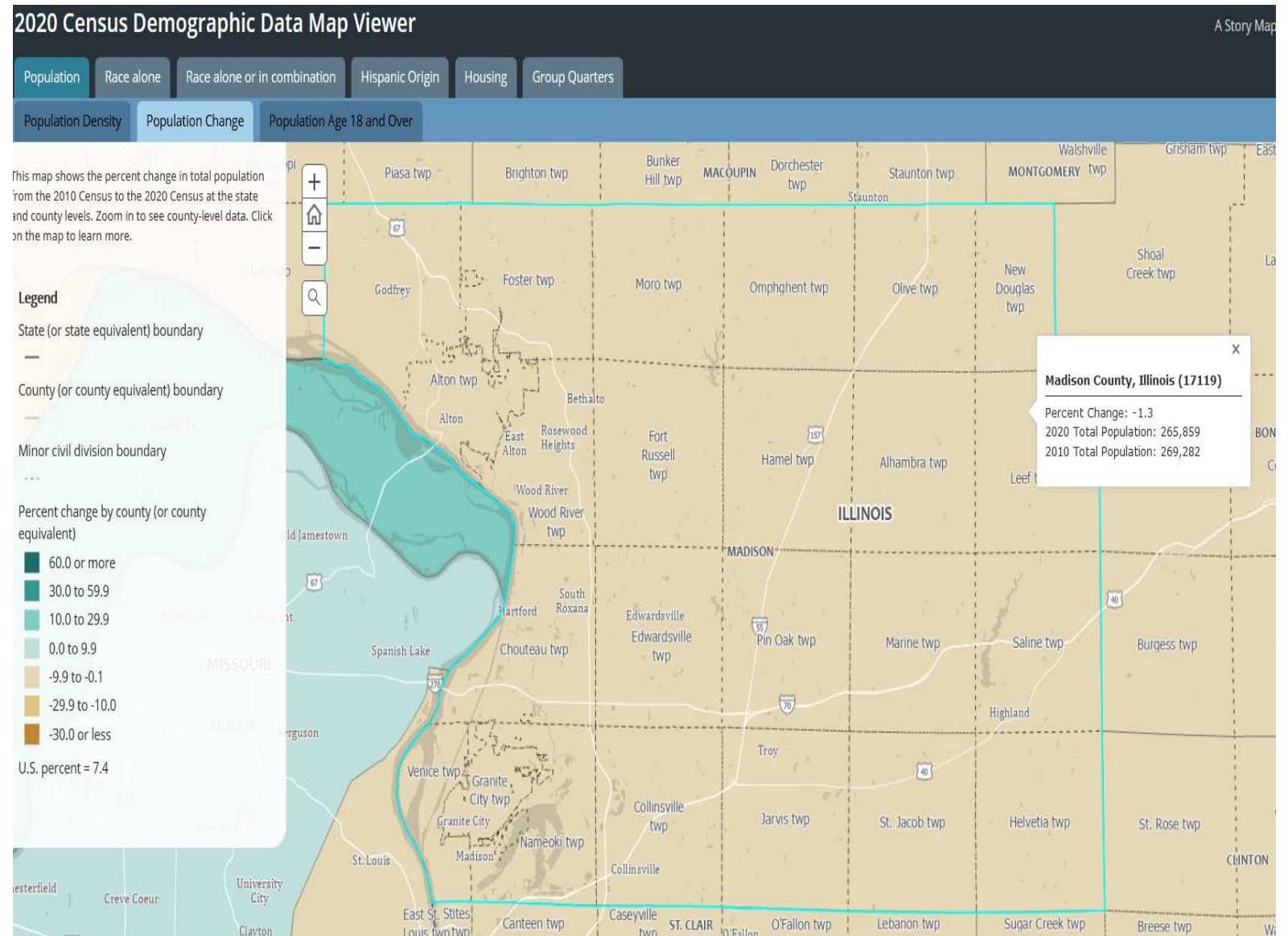
**2010 Population:** 269,282

**2020 Population:** 265,859

**Population % Change:** 1.3% decrease

## 2020 Racial Demographics

- Percent Black or African American alone or in combination: **11.0%**
- Percent Hispanic or Latino: **3.6%**
- Percent Asian alone or in combination: **1.7%**



# Census Numbers for St. Clair County

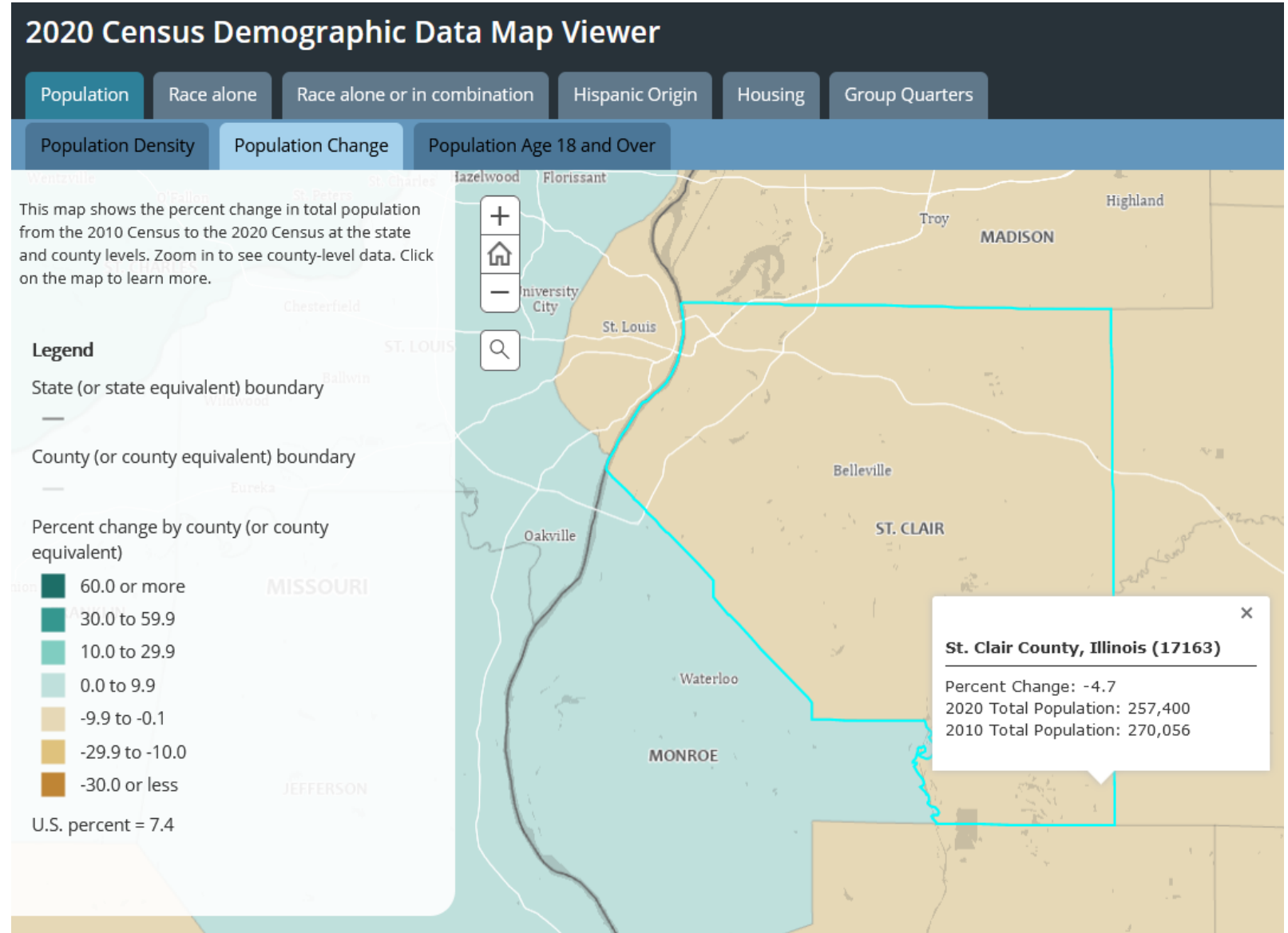
**2010 Population:** 270,056

**2020 Population:** 257,400

**Population % Change:** 4.7% decrease

## 2020 Racial Demographics

- Percent Black or African American alone or in combination: **32.1%**
- Percent Hispanic or Latino: **4.9%**
- Percent Asian alone or in combination: **2.5%**



# Census Numbers for Southwest Central Illinois

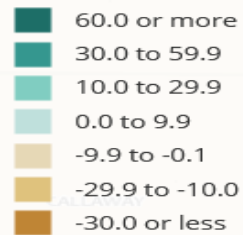
This map shows the percent change in total population from the 2010 Census to the 2020 Census at the state and county levels. Zoom in to see county-level data. Click on the map to learn more.

## Legend

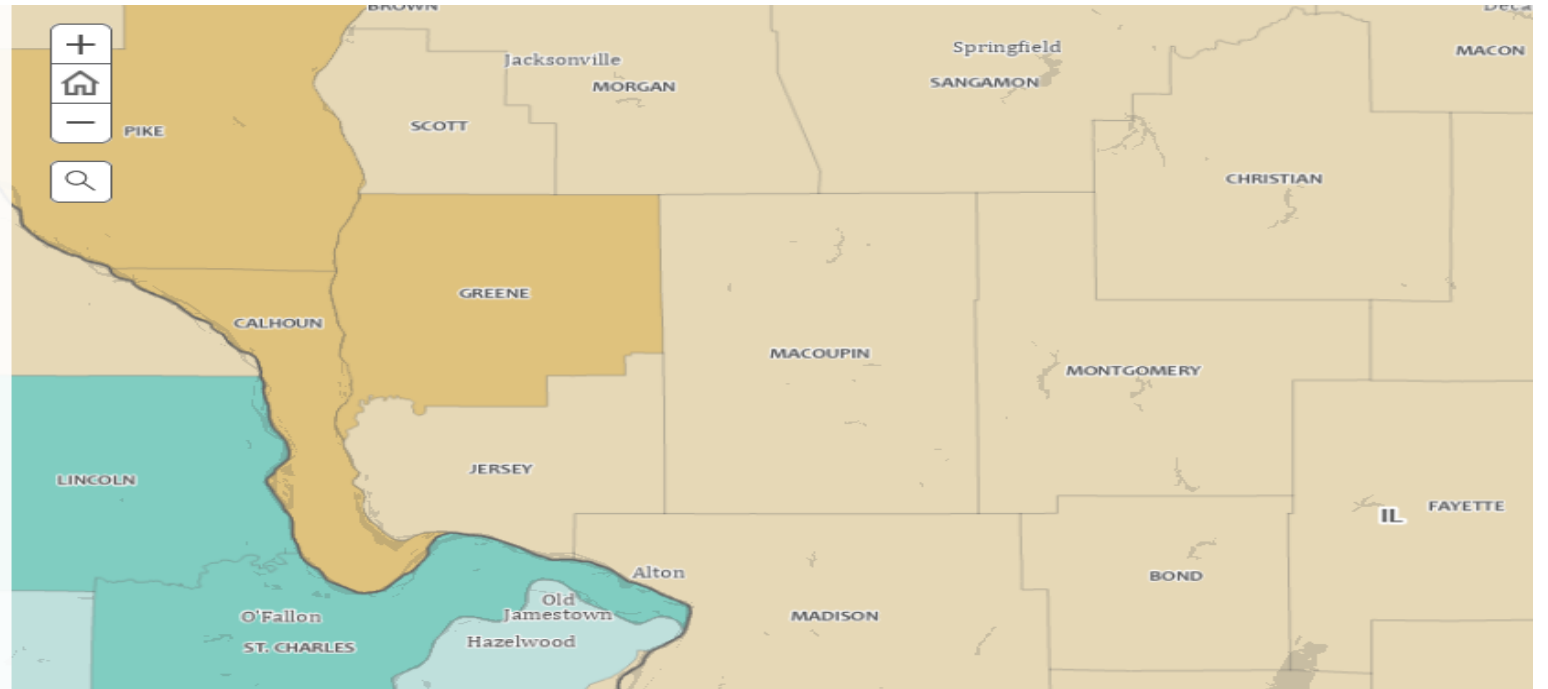
State (or state equivalent) boundary

County (or county equivalent) boundary

Percent change by county (or county equivalent)



U.S. percent = 7.4



## County Population Changes:

- **Calhoun: -12.8%**
  - 2010 Total Population: 5,089
  - 2020 Total Population: 4,437
- **Greene: -13.7%**
  - 2010 Total Population: 13,886
  - 2020 Total Population: 11,985
- **Jersey: -6.4%**
  - 2010 Total Population: 22,985
  - 2020 Total Population: 21,512
- **Macoupin: -5.9%**
  - 2010 Total Population: 47,765
  - 2020 Total Population: 44,967
- **Montgomery: -6.0%**
  - 2010 Total Population: 30,104
  - 2020 Total Population: 28,288
- **Christian: -2.2%**
  - 2010 Total Population: 34,800
  - 2020 Total Population: 34,032

# Census Numbers for Southeast Central Illinois

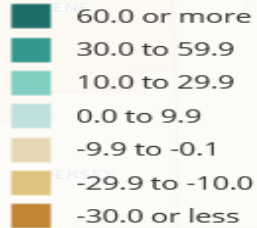
This map shows the percent change in total population from the 2010 Census to the 2020 Census at the state and county levels. Zoom in to see county-level data. Click on the map to learn more.

## Legend

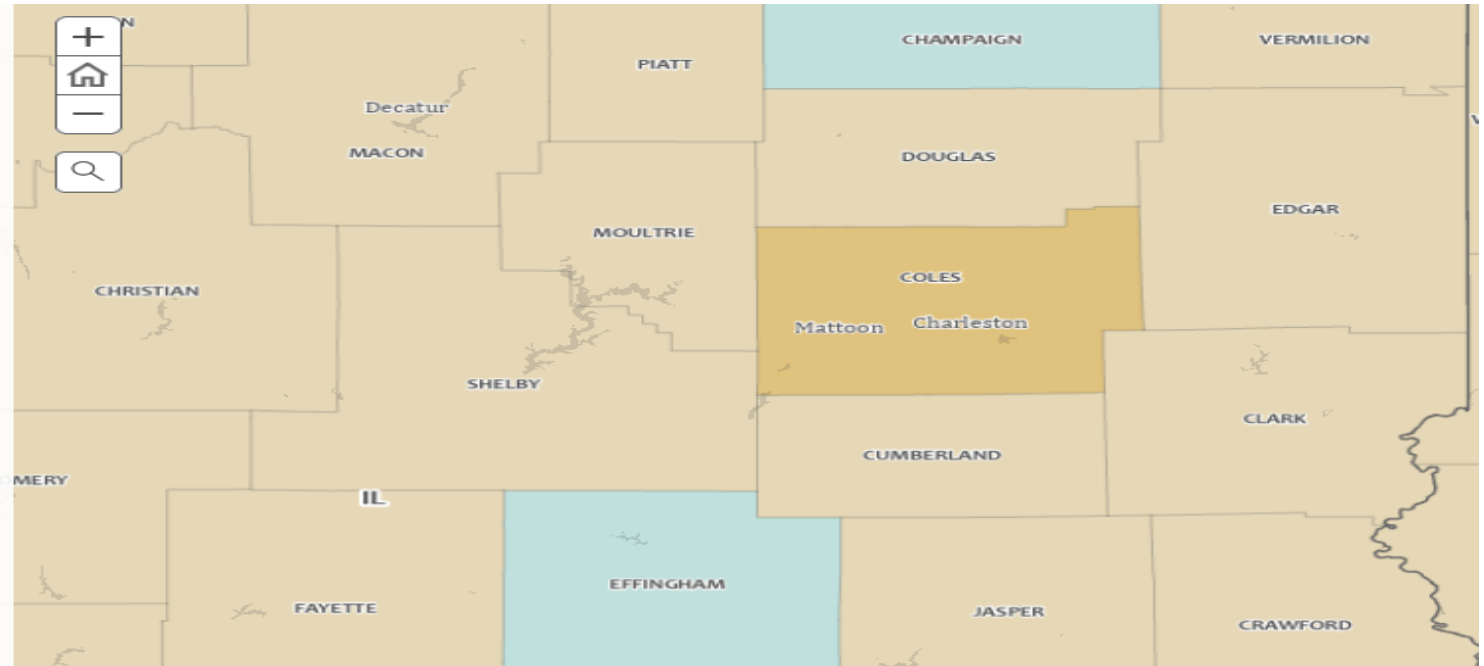
State (or state equivalent) boundary

County (or county equivalent) boundary

Percent change by county (or county equivalent)



U.S. percent = 7.4



## County Population Changes:

- **Shelby: -6.1%**
  - 2010 Total Population: 22,363
  - 2020 Total Population: 20,363
- **Moultrie: -2.2%**
  - 2010 Total Population: 14,846
  - 2020 Total Population: 14,526
- **Douglas: -1.2%**
  - 2010 Total Population: 19,980
  - 2020 Total Population: 19,740
- **Coles: -13.0%**
  - 2010 Total Population: 53,876
  - 2020 Total Population: 46,863
- **Cumberland: -5.4%**
  - 2010 Total Population: 11,048
  - 2020 Total Population: 10,450
- **Edgar: -9.2%**
  - 2010 Total Population: 7,544
  - 2020 Total Population: 6,902
- **Clark: -5.4%**
  - 2010 Total Population: 16,335
  - 2020 Total Population: 15,455

# Census Numbers for South and East Central Illinois



- **Bond: -5.9%**
  - 2010 Total Population: 17,768
  - 2020 Total Population: 16,725
- **Clinton: -2.3%**
  - 2010 Total Population: 37,762
  - 2020 Total Population: 36,899
- **Fayette: -2.9%**
  - 2010 Total Population: 22,140
  - 2020 Total Population: 21,488
- **Marion: -4.3%**
  - 2010 Total Population: 39,437
  - 2020 Total Population: 37,729

## County Population Changes:

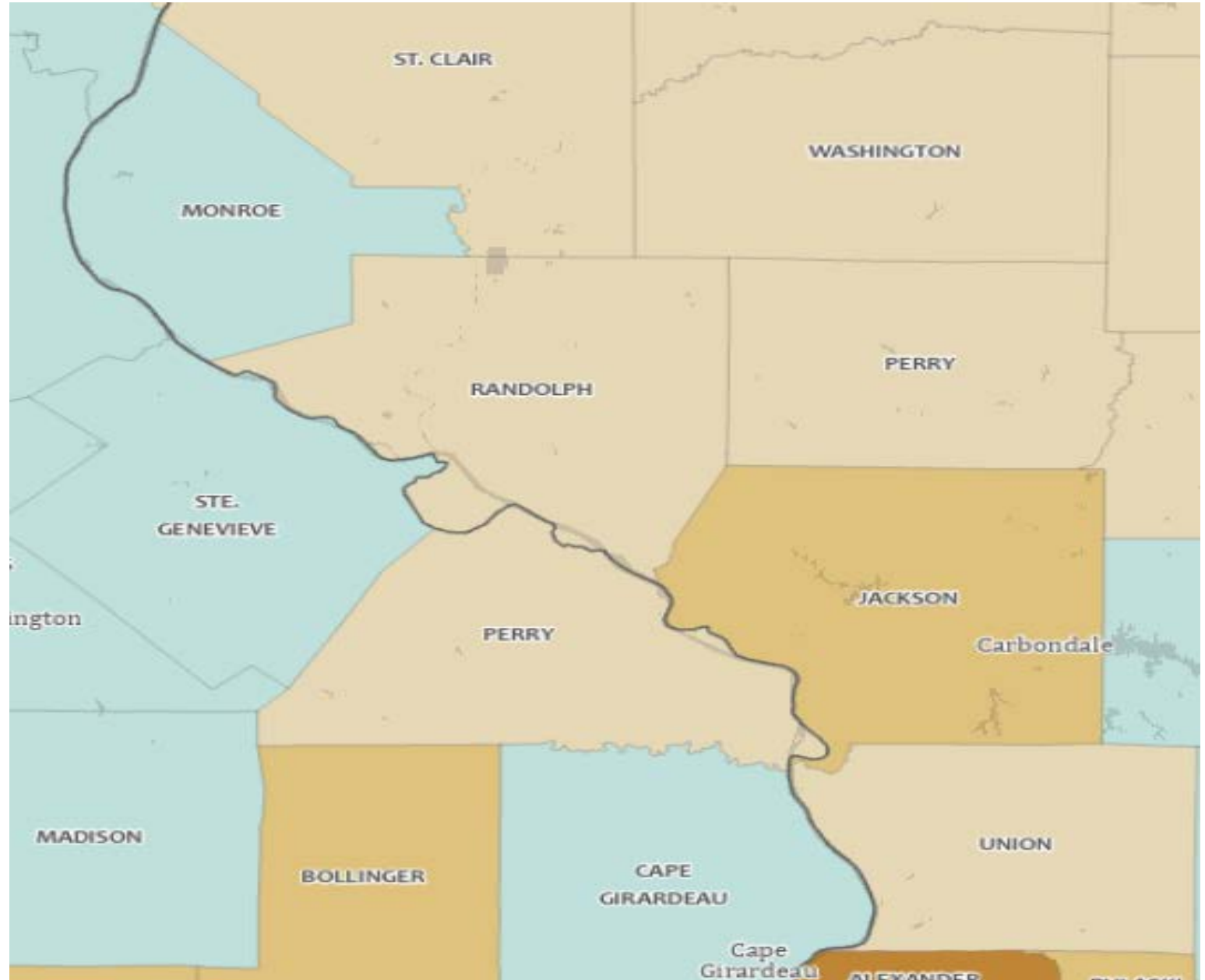
- **Effingham: +1.2%**
  - 2010 Total Population: 34,242
  - 2020 Total Population: 34,668
- **Clay: -3.8%**
  - 2010 Total Population: 13,815
  - 2020 Total Population: 13,288
- **Jasper: -4.2%**
  - 2010 Total Population: 9,698
  - 2020 Total Population: 9,287

- **Crawford: -5.7%**
  - 2010 Total Population: 19,817
  - 2020 Total Population: 18,679
- **Richland: -2.6%**
  - 2010 Total Population: 16,233
  - 2020 Total Population: 15,813
- **Lawrence: -9.2%**
  - 2010 Total Population: 16,833
  - 2020 Total Population: 15,280

# Census Numbers for Southwestern Illinois

## County Population Changes:

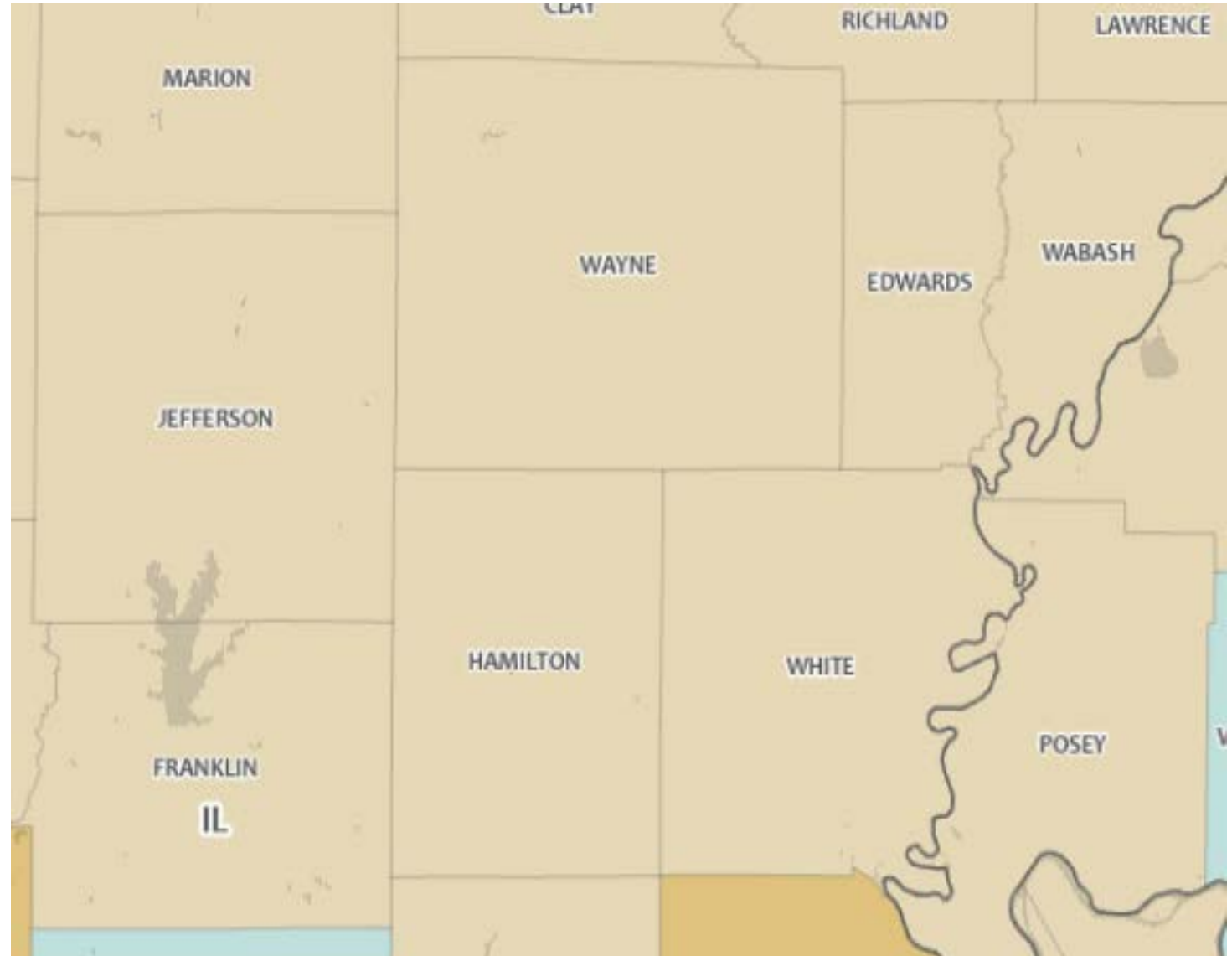
- **Monroe: +6.1%**
  - 2010 Total Population: 32,957
  - 2020 Total Population: 34,962
- **Washington: -6.5%**
  - 2010 Total Population: 14,716
  - 2020 Total Population: 13,761
- **Perry: -4.4%**
  - 2010 Total Population: 39,561
  - 2020 Total Population: 37,804
- **Randolph: -9.9%**
  - 2010 Total Population: 33,476
  - 2020 Total Population: 30,163
- **Jackson: -12.0%**
  - 2010 Total Population: 60,218
  - 2020 Total Population: 52,974
- **Union: -3.2%**
  - 2010 Total Population: 17,808
  - 2020 Total Population: 17,244



# Census Numbers for Southeastern Illinois

## County Population Changes:

- **Jefferson: -4.4%**
  - 2010 Total Population: 38,827
  - 2020 Total Population: 37,113
- **Wayne: -3.5%**
  - 2010 Total Population: 16,760
  - 2020 Total Population: 16,179
- **Edwards: -7.1%**
  - 2010 Total Population: 6,721
  - 2020 Total Population: 6,245
- **Wabash: -4.9%**
  - 2010 Total Population: 11,947
  - 2020 Total Population: 11,361
- **Franklin: -4.4%**
  - 2010 Total Population: 39,561
  - 2020 Total Population: 37,804
- **Hamilton: -5.5%**
  - 2010 Total Population: 8,457
  - 2020 Total Population: 7,993
- **White: -5.4%**
  - 2010 Total Population: 14,665
  - 2020 Total Population: 13,877

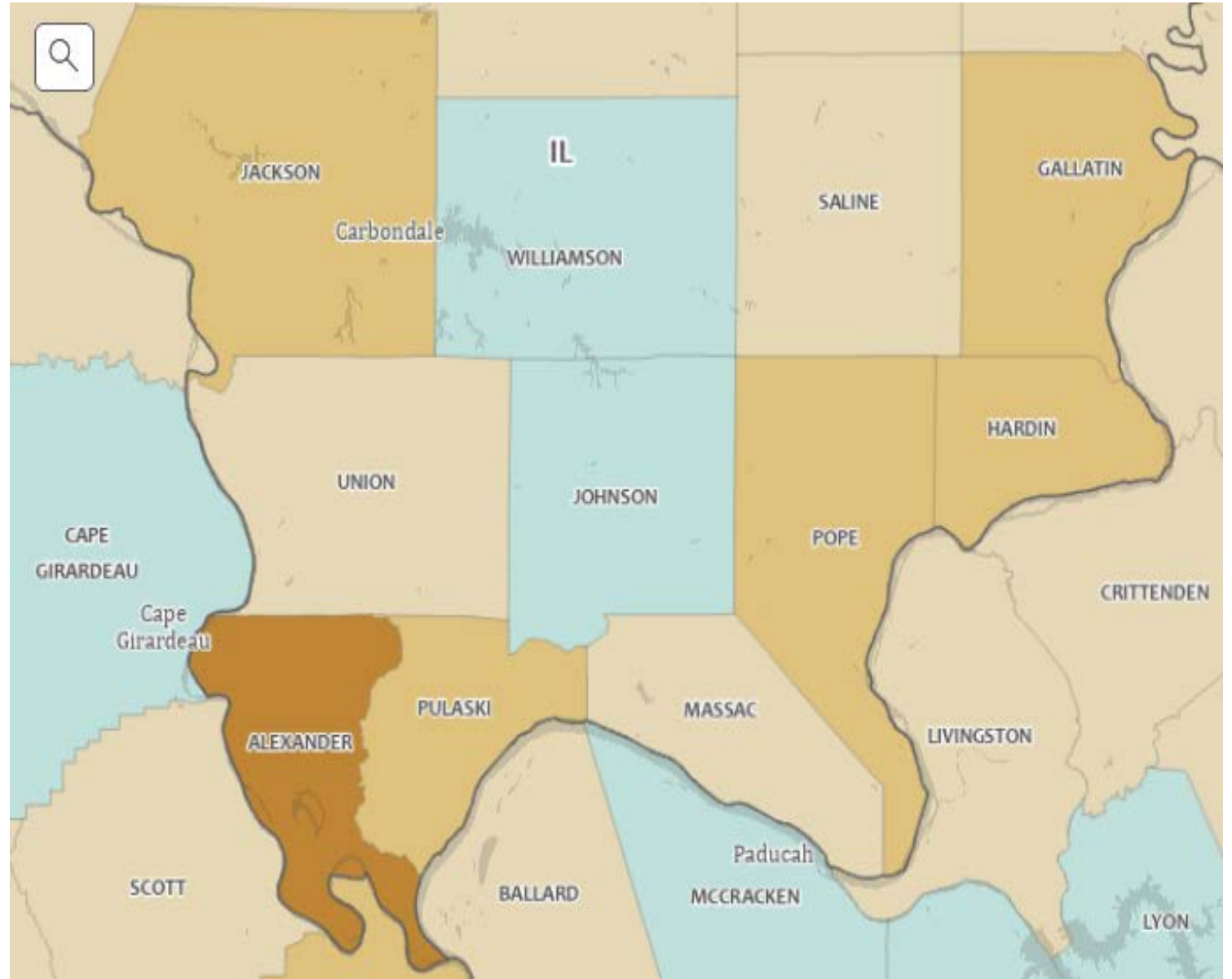




## County Population Changes:

- **Williamson: +1.2%**
  - 2010 Total Population: 66,357
  - 2020 Total Population: 67,153
- **Saline: -4.6%**
  - 2010 Total Population: 24,913
  - 2020 Total Population: 23,768
- **Gallatin: -11.5%**
  - 2010 Total Population: 5,589
  - 2020 Total Population: 4,946
- **Johnson: +5.8%**
  - 2010 Total Population: 12,582
  - 2020 Total Population: 13,308
- **Pope: -5.4%**
  - 2010 Total Population: 14,665
  - 2020 Total Population: 13,877
- **Hardin: -15.0%**
  - 2010 Total Population: 4,320
  - 2020 Total Population: 3,649
- **Alexander: -36.4%**
  - 2010 Total Population: 8,238
  - 2020 Total Population: 5,240
- **Pulaski: -15.7%**
  - 2010 Total Population: 6,161
  - 2020 Total Population: 5,193
- **Massac: -8.2%**
  - 2010 Total Population: 15,429
  - 2020 Total Population: 14,169

# Census Numbers for Southern Illinois





## Senate District Populations

### 2011 Enacted Senate Districts in this area with 2020 Census Population

SD 48: Underpopulated by -13,049 persons

SD 50: Underpopulated by -5,494 persons

SD 51: Underpopulated by -1,495 persons

SD 54: Underpopulated by -292 persons

SD 55: Underpopulated by -14,581 persons

SD 56: Overpopulated by +370 persons

SD 57: Underpopulated by -17,945 persons

SD 58: Underpopulated by -11,353 persons

SD 59: Underpopulated by -11,819 persons

# ***DRAW YOUR OWN MAP***

## **Websites, Emails, and Drawing Portal**

Senate Democrats Redistricting Website: <https://ilsenateredistricting.com/>

Senate Committee email address: [redistrictingcommittee@senatedem.ilga.gov](mailto:redistrictingcommittee@senatedem.ilga.gov)

To draw your own map or community of Interest:

<https://illinois.mydistricting.com/legdistricting/illinois>

